

SPIRIT YACHTS 46 2015 WHISPER OF LYMINGTON



Specification

WHISPER OF LYMINGTON

SPIRIT YACHTS 46 2015 WHISPER OF LYMINGTON

Designer	Sean McMillan/ Spirit Yachts	Length waterline	33 ft 10 in / 10.3 m	Engine	Yanmar 3YM30 29 hp diesel
Builder	Spirit Yachts Ltd., Ipswich	Beam	9 ft 3 in / 2.83 m	Location	United Kingdom
Date	2015	Draft	6 ft 7 in / 2 m	Price	GBP 315,000
Length overall	46 ft 7 in / 14.2 m	Displacement	4.3 Tonnes		
Length deck	46 ft 7 in / 14.2 m	Construction	Douglas fir and mahogany wood epoxy		

These details are provisional and may be amended

Specification

BROKER'S COMMENTS

The Spirit 46 truly set Spirit Yachts on the right track and has become their most popular model. No wonder: this design has many of the answers if you are searching for modern racing and cruising performance with the emotional satisfaction of an incredibly beautiful hull form, startling ease of handling, an interior as elegant as her external lines would suggest, and an active group of fellow owners. WHISPER OF LYMINGTON ticks all these boxes, and is one of the most recently built. In present, second ownership since 2017, she has been raced and cruised extensively and placed fourth overall at the 2022 Spirit Regatta, Guernsey, taking home the prestigious Spirit Cup for 'embracing the Spirit of the regatta'.



• SANDEMAN YACHT COMPANY •  
• Brokerage Of Classic & Vintage  
Yachts •

[www.sandemanyachtcompany.co.uk](http://www.sandemanyachtcompany.co.uk)

SPIRIT YACHTS 46 2015 WHISPER OF LYMINGTON

---

Specification

OWNER'S COMMENTS

It has been a privilege to be the custodian of such a beautifully designed and crafted performance yacht since 2017. Whether inshore racing, weekend cruising with family or short handed sailing, she is an absolute delight to sail, is easily handled, and attracts admiring looks wherever she goes. Being of the Spirit of Tradition class, we have particularly enjoyed the camaraderie of being a part of the classic regatta scene in the UK together with other like minded Spirit owners.

---

Specification

CONSTRUCTION

- Spirit Yachts Yard No: 46-11
  - Built to EU RCD Category A ISO 12215
  - Laminated Douglas fir wood keel, hog, stem and horn timber
  - Keelson at sawn mahogany mast step
  - Laminated mahogany transverse floors and frames
  - Sawn mahogany hanging knees creating ring frames
  - Laminated Douglas fir full length beamshelves
  - Bonded and glass sheathed plywood floors and ring frames fore and aft
  - Sawn mahogany floors in way of keel and mast step
  - Sawn mahogany engine bearers
  - 15 mm Douglas fir 'Speed strip' planking
  - 2 x Diagonal 3 mm Khaya outer veneer
  - 600 gm Biaxial glass cloth set in WEST epoxy resin
  - Additional 200 gm finishing twill cloth to topsides
  - Awlgrip topsides paint finish
  - Mahogany veneered marine plywood transom
  - Internal hull sealed
  - 9 mm Marine plywood bulkheads and locker partitions
  - Bulkheads mahogany veneered where relevant
  - Bow and lazarette bulkheads are watertight.
  - 6 mm Teak laid deck epoxy bonded to marine ply sub-deck
  - Laminated mahogany deck beams
  - Epoxy primed steel fin keel with cast lead lower bulb 2.15 tonnes
  - 10 x 24 mm Stainless steel keelbolts
  - Laminated ply, sheathed semi-balanced spade rudder
  - Jefa hull and deck bearings
  - Laminated mahogany superstructures
- 

Specification

DECK LAYOUT, EQUIPMENT, AND GROUND TACKLE

FROM AFT

- Raw teak laid deck on marine plywood substrate
- Varnished teak raised toerail and taffrail
- Removable stainless steel stanchions
- Deck fittings a mix of stainless steel and chromed bronze

AFT DECK

- Mooring fairleads port and starboard
- Stainless steel mooring cleat on centreline
- Ensign staff socket
- 3 x Flush hatches
- Starboard hatch to lazarette
- Port hatch to boarding ladder and swim shower
- Wood tiller with Harken extension and Autopilot arm fitting
- Double sheave spinnaker blocks port and starboard

COCKPIT

- Large sunk cockpit
- Attractive elliptical coaming with chafe plates at winches
- Teak laid cockpit seats port and starboard and swept round aft
- Very deep lockers under offer excellent stowage
- Locker cowl vents
- Shore power socket
- Yanmar engine panel
- Lewmar throttle control
- Lewmar mainsheet traveller and car

- Lewmar foresail sheet tracks and cars with Barber haulers

COACHROOF

- Raised 40 mm from standard giving 50 mm more internal headroom
- Cold moulded mahogany
- Laid teak roof on marine plywood
- 3 x Elliptical stainless steel portlights port and starboard
- Raw mahogany grabrails port and starboard
- Sliding companionway hatch
- Double leaf companionway doors
- Flush Solimar acrylic hatch over saloon
- Flush Solimar acrylic hatch over WC compartment
- Lewmar 42ST 2-speed stainless steel halyards/ controls winches port and starboard
- 7 x Line clutches/ halyard locks port and starboard
- Ronstan lead sheaves port and starboard
- Ronstan turning blocks at mast base

FOREDECK

- Flush Solimar acrylic hatch over saloon over forecabin
- Stainless steel mooring cleat on centreline
- Chromed mooring fairleads port and starboard
- Recessed forestay chainplate
- Flush hatch to anchor well and furler
- Anchor bow roller offset to port of stemhead

- Lewmar and Ronstan blocks
- Manual backstay control
- Laid teak w. Spirit Yachts logo bridge deck with locker under
- Raymarine repeaters at house bulkhead

#### SIDE DECKS

- Lewmar self-tailing stainless steel sheet winches
- 2 x 50ST Port and starboard

#### GROUND TACKLE

- 10 kg Delta anchor
- Stainless steel anchor cradle
- 7 mm short link chain/ multiplait warp
- Fortress FX16 kedge anchor

### Specification

## ACCOMMODATION AND DOMESTIC EQUIPMENT

#### SUMMARY

- Accommodation for 5 in fore cabin, saloon and a quarter berth
- Traditional mahogany framed and panelled marine plywood joinery
- Mahogany trim
- Mahogany veneered plywood sole boards
- Alcantara covered foam upholstery
- LED Lighting
- Access via 4 x steps down from companionway hatch
- Engine box forms part of steps

#### GALLEY TO PORT

- Isotherm B140 fridge/ freezer 40 L
- Raw teak top surfaces
- Smev 2 x burner hob with smoked glass lid
- Stainless steel sink; chopping board cover
- Lockers outboard and below
- Mixer tap
- 'Cabin' lamp/ reading lamp

#### NAV STATION TO STARBOARD

- Chart table
- Lift lid stowage under
- Shelf and locker outboard
- 'Cabin' lamp/ reading lamp
- Nav and communications displays
- Ship's electrical panel

#### QUARTER BERTH TO STARBOARD

- Lockers outboard
- Blue Alcantara upholstery

- 'Cabin' reading light

#### FORWARD TO SALOON

- Settees/ berths port and starboard
- Blue Alcantara upholstery
- Stowage under and outboard
- Shelves and lockers outboard
- Removable folding saloon table
- Cutlery stowage under
- Hatch in deckhead
- '4 x Cabin' reading lights
- Alpine stereo with JL amp; 2 x speakers

#### DOOR OFFSET TO STARBOARD FORWARD TO WC COMPARTMENT

- Stainless steel inset sink unit to starboard
- Mixer tap
- Stowage under and outboard
- Jabsco 12 V toilet to port
- Stowage
- Shower with sump and pump
- Hatch in deckhead
- Deckhead light

#### FORWARD TO FORECABIN

- Double berth
- Alcantara type upholstery
- Stowage under
- Shelves at hull side
- 2 x 'Cabin' reading lamps
- LED Dimmable mood lighting
- Hatch in deckhead
- Access fwd to chain locker

### Specification

## RIG, SAILS, AND CANVASWORK

#### RIG

##### Spars

- Keel-stepped fractional sloop rig
- Southern Spars white spray painted carbon mast
- Double swept spreaders
- Southern Spars white spray painted carbon boom
- Fitted for slab reefing
- Rod vang
- Lazyjacks
- Carbon spinnaker pole
- 12 V Bartels under deck headsail furler with aluminium foil Standing rigging
- Discontinuous 6mm and 7mm Nitronic stainless steel rod shrouds
- Stainless steel barrel type rigging screws; stainless steel toggles

##### Running Rigging

- Mix of braid on braid polyester and Spectra

#### SAILS

- Slab-reef mainsail
- Furling jib
- Code 2 racing jib (non-furling)
- Storm jib
- Storm tri-sail
- cruising asymmetric
- Code Zero with furler
- S2 Spinnaker
- S4 Spinnaker

- Bartells 12 V under deck headsail furler
- Aluminium foil

- S6 Spinnaker
- A2 Asymmetric
- A4 Asymmetric

#### CANVASWORK

- Mainsail boom cover
- Furled headsail cover
- In-commission under boom cockpit to forestay cover
- Overall/ mast up winter cover (for layup ashore)
- Sunbrella covered foam cockpit cushions

---

#### Specification

### MECHANICAL, ELECTRICAL, AND TANKAGE

#### MECHANICAL

- Yanmar 3YM30 3 cyl 29 hp diesel
- Shaft drive
- Atra Flex coupling
- Tides Marine self-aligning non drip seal
- Stainless steel shaft
- Bronze p-bracket
- 3-Bladed bronze Gori 16.5 x 13 feathering prop

#### ELECTRICAL

- 12 V DC System
- 160 Ah Heavy duty AGM domestic battery
- 70 Ah Heavy duty AGM engine start battery
- 80 A Alternator
- 240 V AC Shore power system
- Fuse protected + Mastervolt isolation transformer
- Mastervolt battery charger
- Inverter
- AC Control panel
- Mastervolt BM3 battery management monitor
- 12 V and USB sockets

#### TANKAGE AND ASSOCIATED

- Polypropylene water tank w. 12 V gauge 17.6 Gal / 80 L
- Jabsco Par Max4 freshwater pump
- 30 L Hot water tank via calorifier and 750 W element
- Deck shower at lazarette
- Whale Gulper 12 V manually operated shower discharge pump
- Polypropylene 20 L black water holding tank
- WC discharges to tank with valved overboard discharge or pump out
- Polypropylene fuel tank 17.6 Gal / 80 L
- Gas bottle drained locker in lazarette

#### OTHER

- Webasto 8000Btu air condition unit
- Webasto Air Top 40 diesel fired cabin heater

---

#### Specification

### NAVIGATION AND COMMUNICATIONS

#### NAVIGATION

- 1 x Raymarine E series multi-function chart plotter, GPS, AIS, data
- 2 x Raymarine A series multi-function chart plotter, GPS, AIS
- Raymarine autopilot display

- Raymarine i70 multi-function display
- Repeaters duplicated port and starboard at companionway

#### COMMUNICATIONS

- Raymarine VHF/DSC
- Icom IC-M35 hand held VHF

---

#### Specification

### SAFETY

- Whale manual bilge pump at cockpit
- 2 x Jabsco 12 V auto/ manual bilge pumps
- Bilge alarms
- Harness loops in cockpit
- Jackstay webbing
- LED navigation lights
- 12 V Isolator valve for gas supply

- 2 x Je-50 clean agent fire extinguishers
- Fire blanket.
- First aid kit
- Horseshoe lifebuoy
- 6-Person liferaft (needs service)

---

#### Specification

### OTHER EQUIPMENT

- Windex
- Shore power cable

- Assorted spares and tools
- Assorted winch handles

- Portable stainless steel boarding ladder

- Assorted fenders and warps
- Ensign and staff

- Extendable deckwash hose

---

Disclaimer

These particulars have been prepared from information provided by the vendors and are intended as a general guide. The purchaser should confirm details of concern to them by survey or engineers inspection. The purchaser should also ensure that the purchase contract properly reflects their concerns and specifies details on which they wish to rely.

---



SPRIT YACHTS 46 2015 WHISPER OF LYMINGTON

Specification  
GALLERY







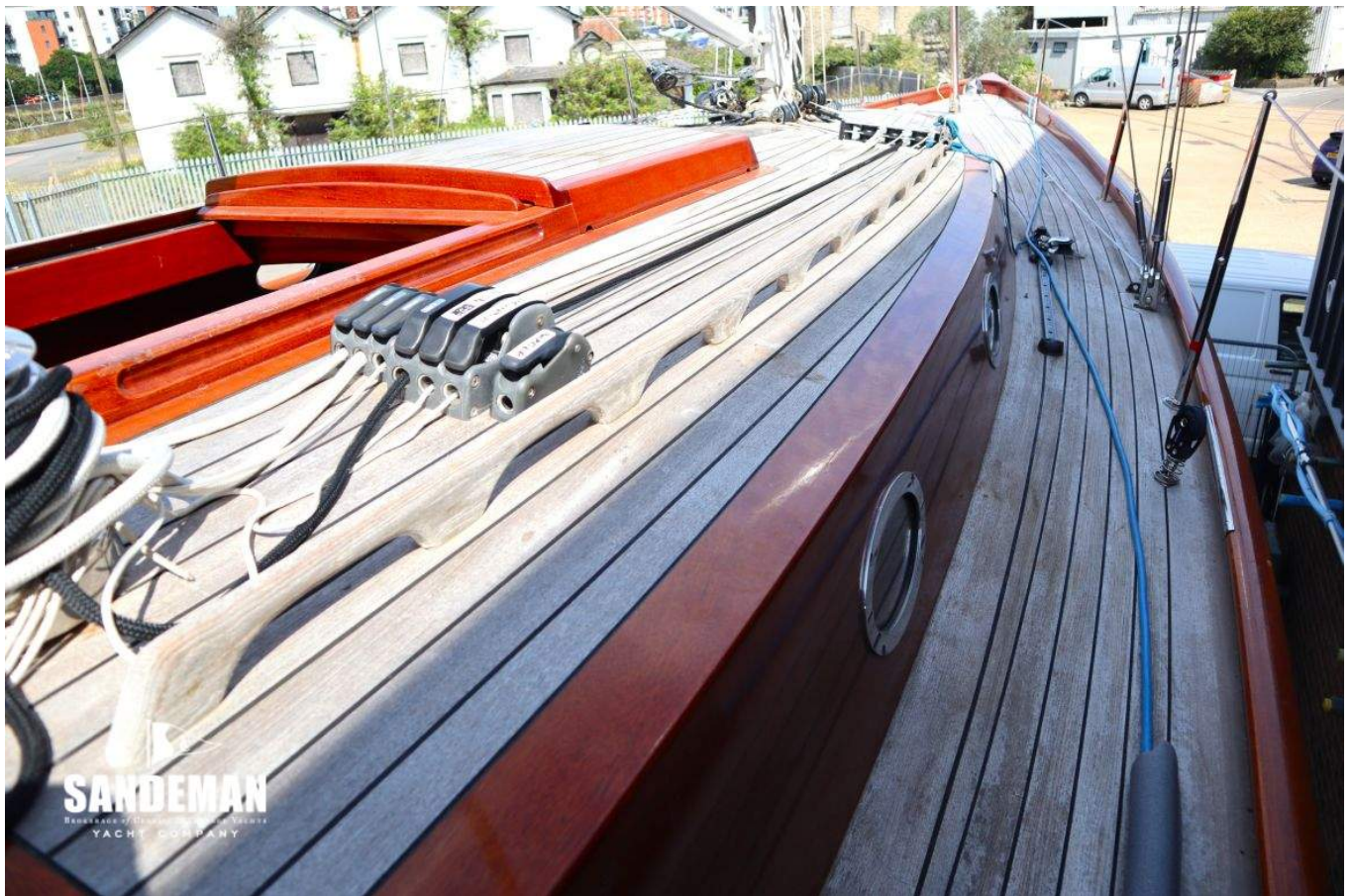




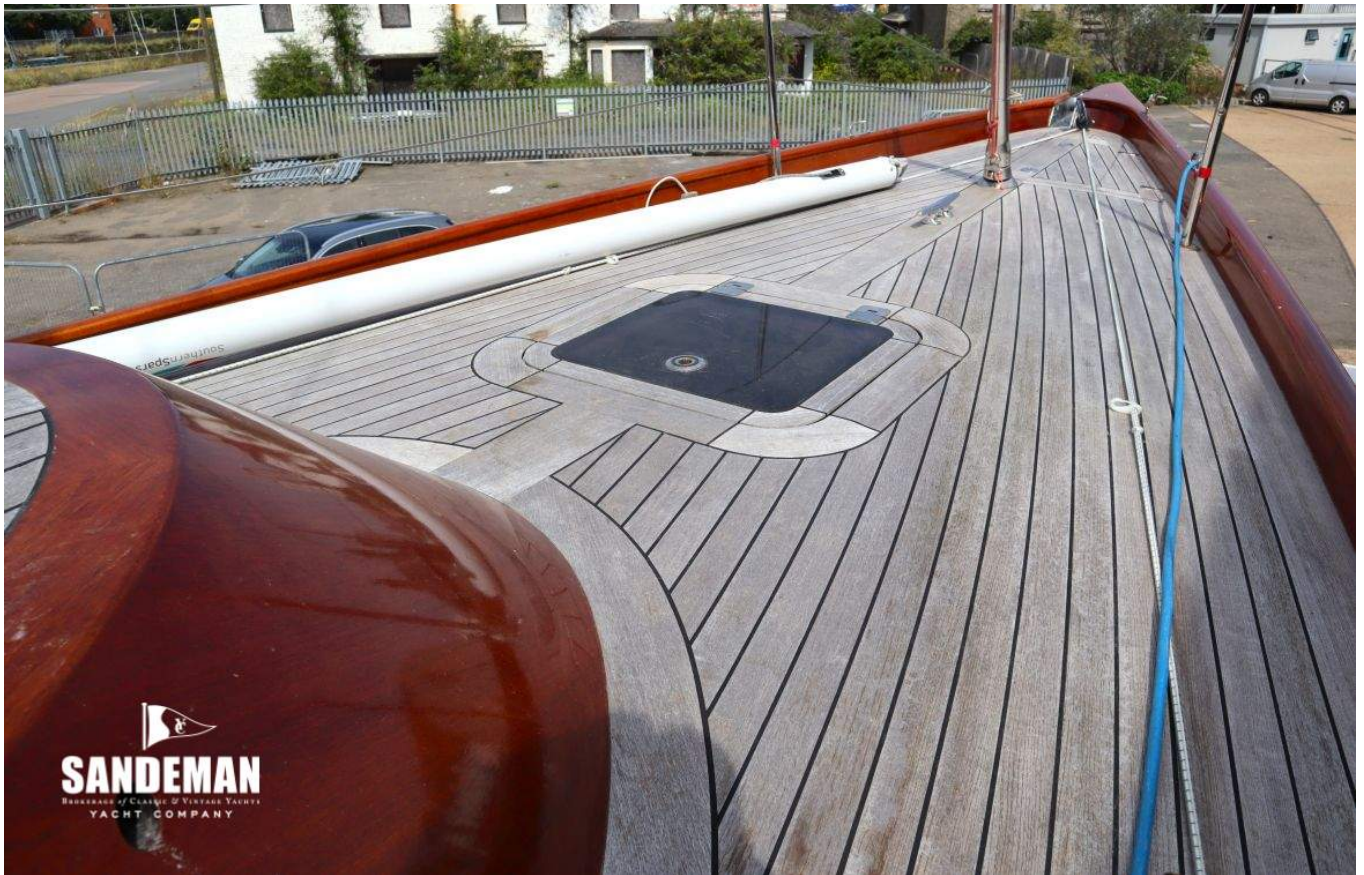


















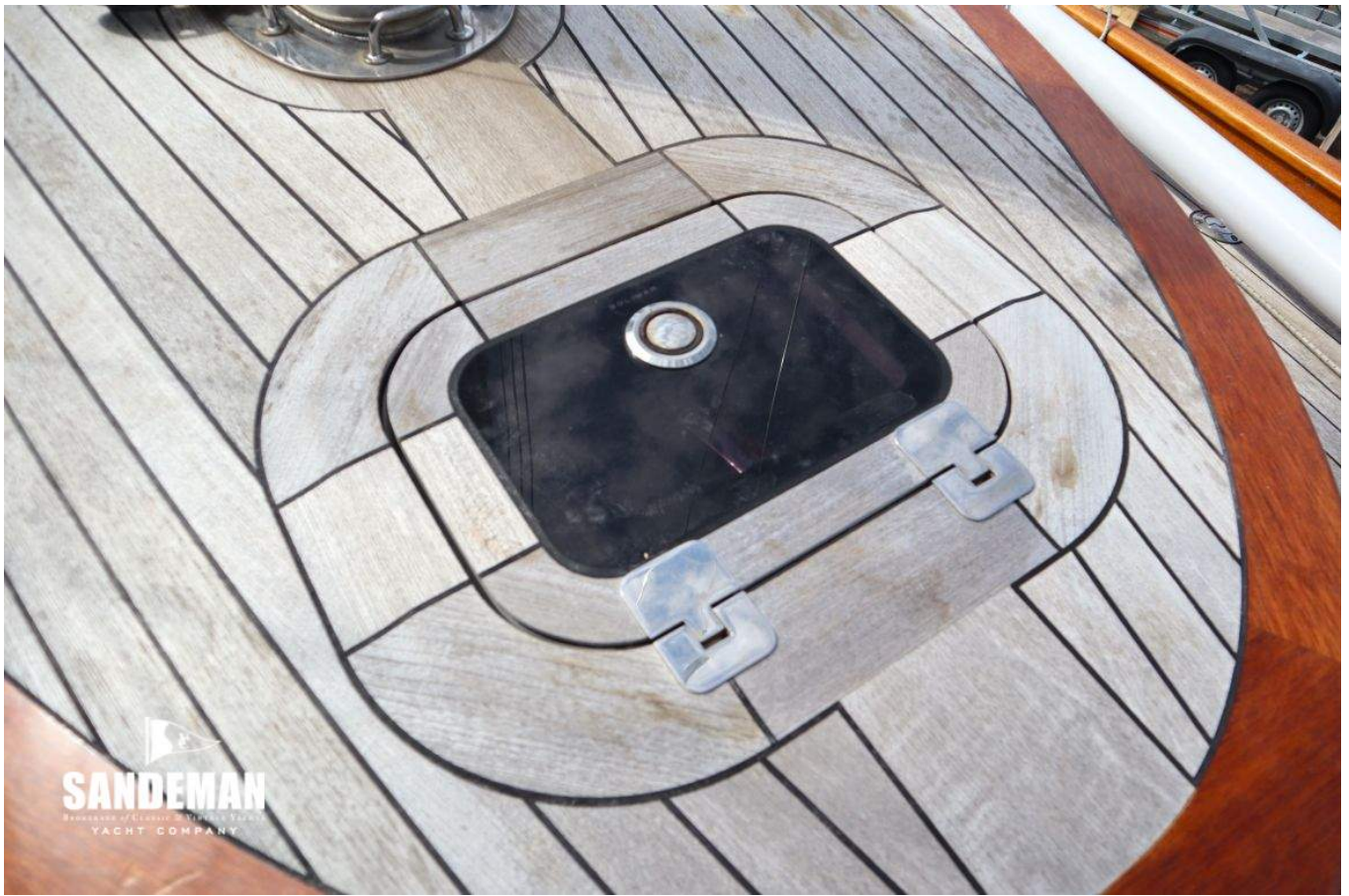






  
**SANDEMAN**  
SPECIALTY YACHTS & BOATS  
YACHT COMPANY

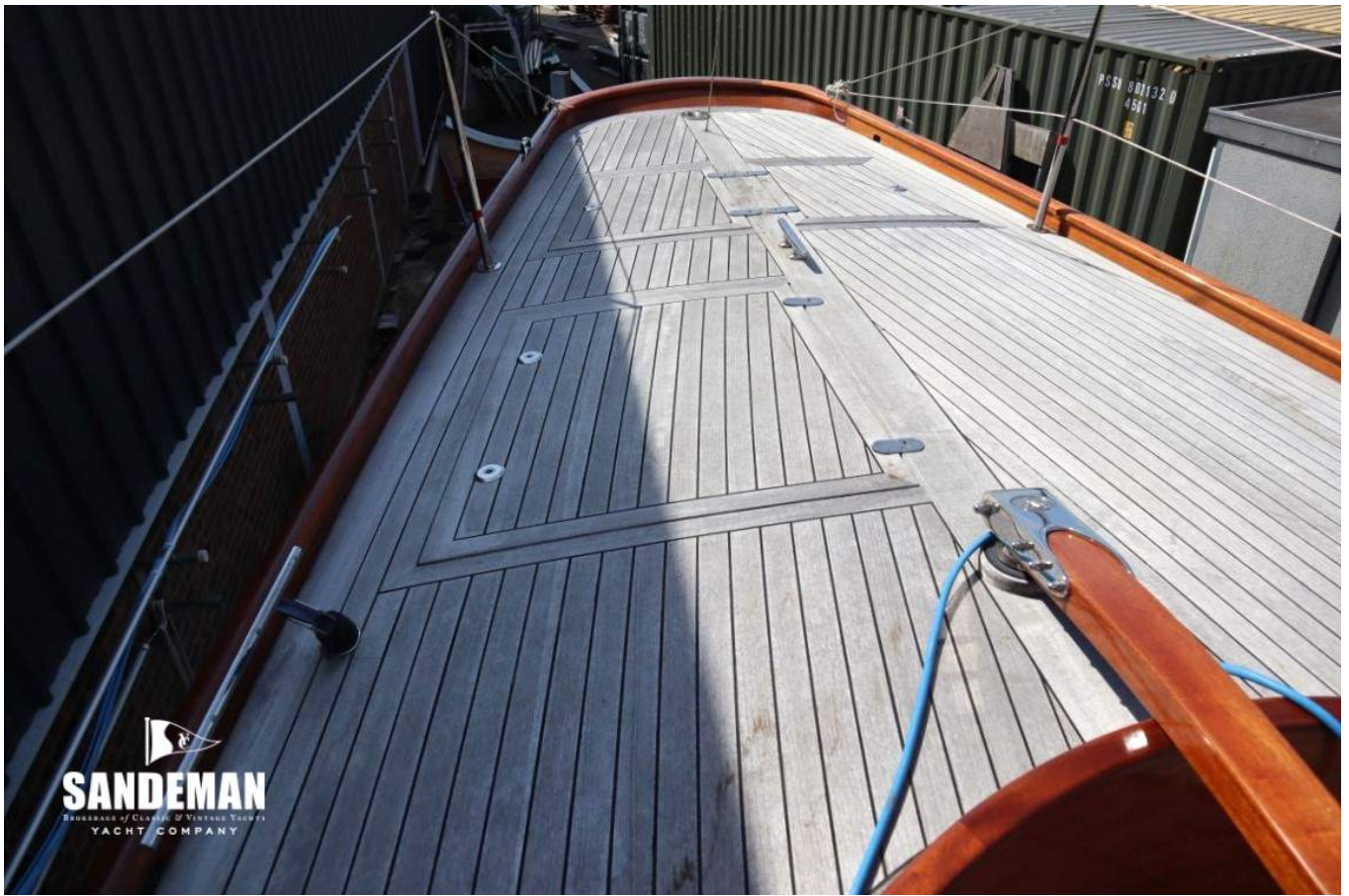




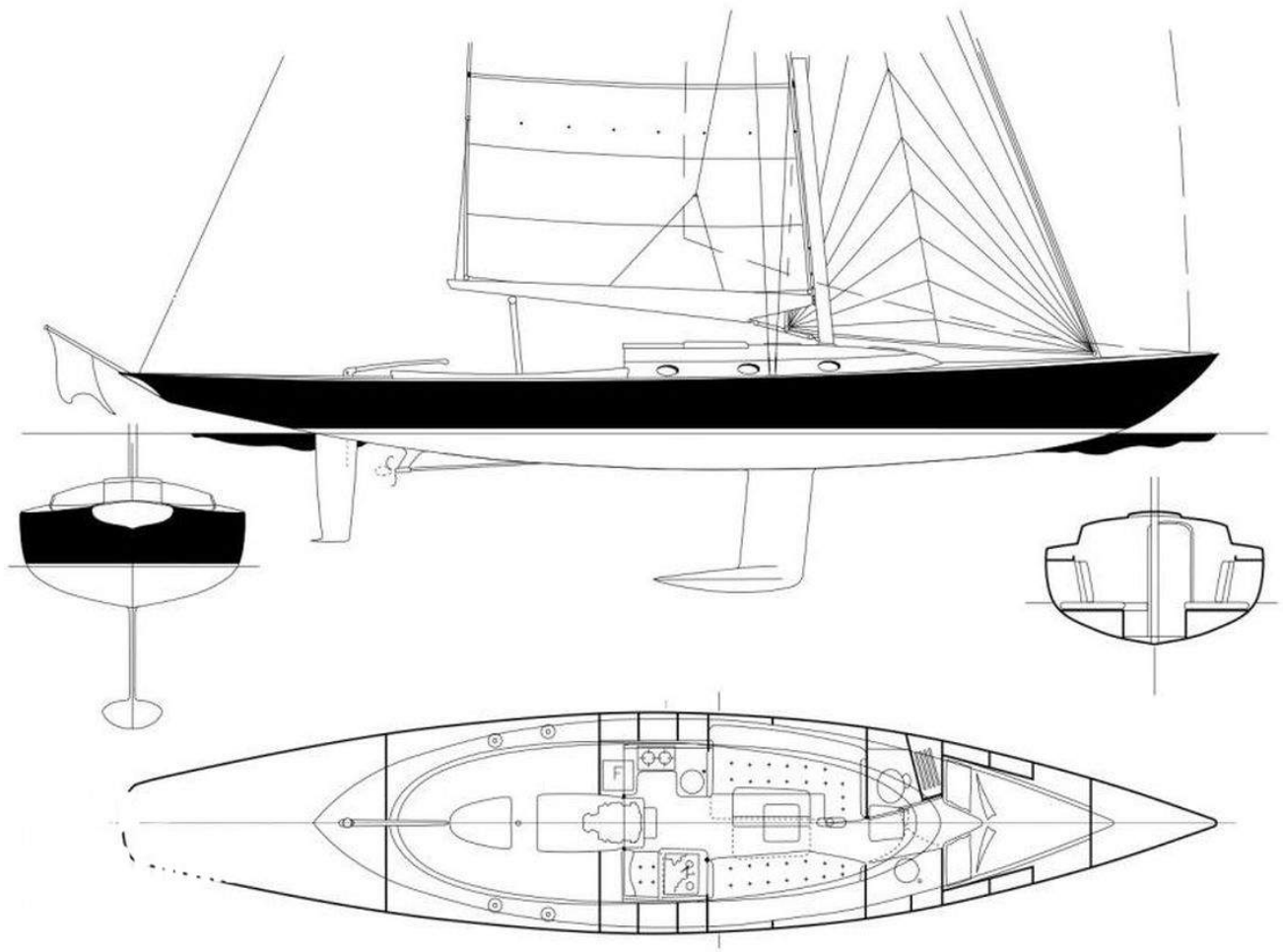




















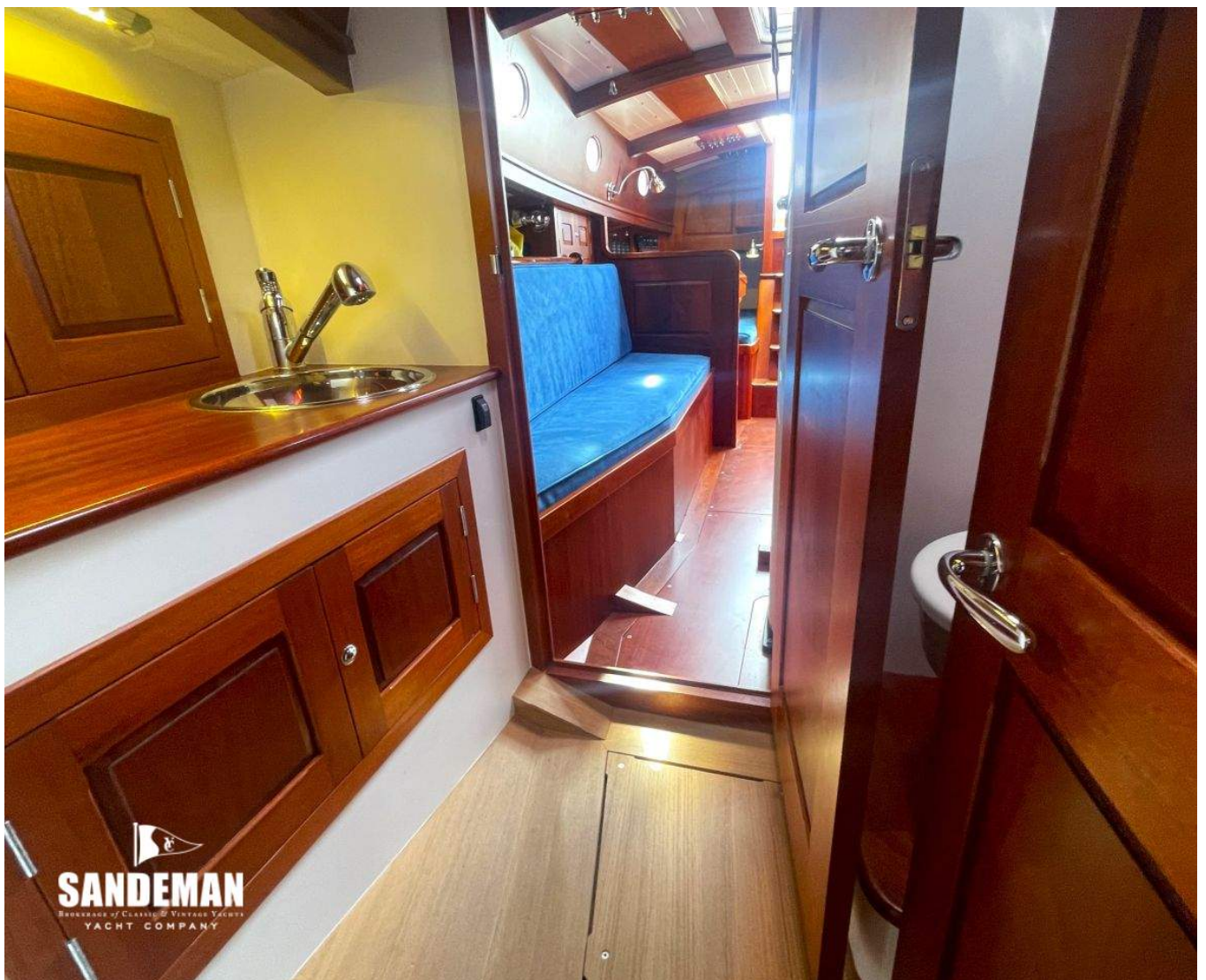












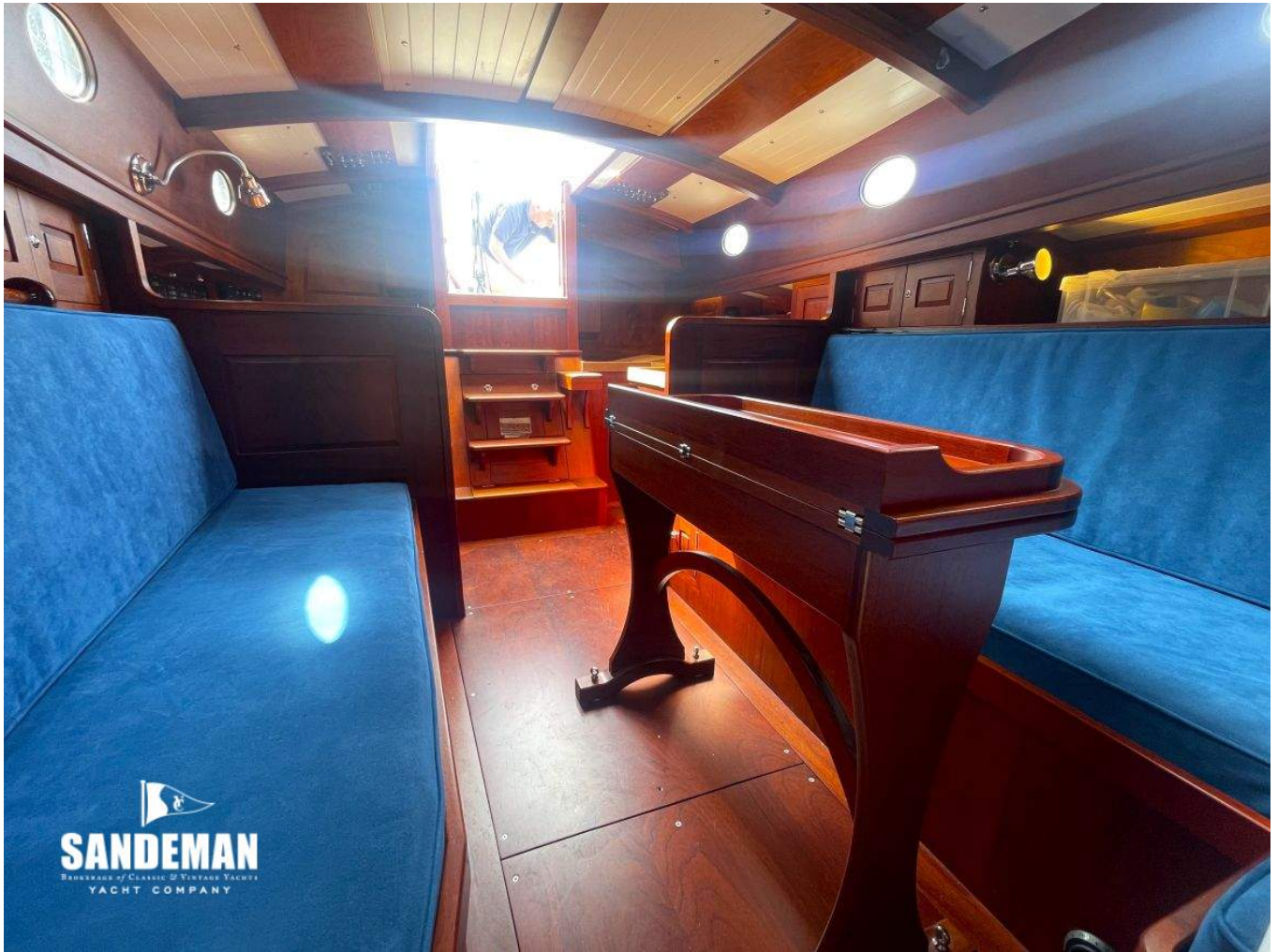












  
**SANDEMAN**  
HERITAGE OF CLASSIC & VINTAGE YACHTS  
YACHT COMPANY







