

SPIRIT 65DH 65 FT BERMUDAN SLOOP 2021 - SOLD



Specification

SPIRIT OF JOSEPHINE  
SPIRIT 65DH 65 FT BERMUDAN SLOOP 2021

Designer	Sean McMillan/ Spirit Yachts	Length waterline	46 ft 11 in / 14.3 m	Engine	2 x Ocean Volt SD15 Servoprop propulsion
Builder	Spirit Yachts Ltd., Ipswich	Beam	14 ft 1 in / 4.3 m	Location	United Kingdom
Date	2021	Draft	9 ft 2 in / 2.8 m	Price	Sold
Length overall	65 ft 0 in / 19.8 m	Displacement	16.5 Tonnes		
Length deck	65 ft 0 in / 19.8 m	Construction	Wood Epoxy Composite		

These details are provisional and may be amended

Specification

BROKER'S COMMENTS

In our view, the 46 and 52 were among the most successful Spirit Yachts designs, and for good reason. But at 65 feet, the deckhouse proportions really work and the concept probably reaches its sweet spot - a beautifully timeless aesthetic - and could easily be sailed by two people only. Elegance combined with modern handling above and below the waterline, and great craftsmanship, are of course a Spirit Yachts specialty, but it takes commissioning owners with vision to create a boat like SPIRIT OF JOSEPHINE. From natural zinc surfaces to Harris Tweed Chesterfields, she leaves you wanting to spend time aboard. This is no average boat: SPIRIT OF JOSEPHINE is a modern classic with an awful lot of soul.



• SANDEMAN YACHT COMPANY •  
• Brokerage Of Classic & Vintage  
Yachts •

[www.sandemanyachtcompany.co.uk](http://www.sandemanyachtcompany.co.uk)

SPIRIT 65DH 65 FT BERMUDAN SLOOP 2021

---

Specification

OWNERS' COMMENTS

SPIRIT OF JOSEPHINE was a five year project from initial discussion to completion. She was built to embody some of the very best things we enjoy and hold dear, and was a fabulous coalition of ideas. First and foremost, she is a beautifully made and elegant sailing yacht. Light, responsive, fast and genuinely fun for two people to sail. She is also an indulgence: we recognised that when we built her, but we also recognised that our fortune in being able to build her did not give us license to overly pollute or damage the environment. So she is primarily made of natural, sustainable materials and has an electric regenerative sail drive system to supplement the wind!

The saloon does away with a traditional u-shaped table in favour of a zinc bar and leather bar stools, allowing comfortable chat over meal prep (style cue from the Covent Garden Hotel where we have been known to spend a number of hours!). The brass bar lights are a modern adaptation (LED bulbs) of old steamer lights. Her saloon sofa and chairs are made from Harris Tweed and the arm chairs in particular were installed to allow comfortable relaxation in a glorious space, albeit with an abundance of hand holds.

The crockery storage is beautiful Spirit Yachts cabinetry and just makes you smile. Its about detail, finish and ingenuity. No one needs a 30 piece bone china set of crockery at sea, but then no one needs a 65 foot yacht.

All the mattresses are natural (marine proofed) materials and supplied by Natural Mat. The sinks are from the London Basin company and match our house sinks, and in a nod to our favourite spy the nav chair is modelled on the passenger seat of an Aston Martin DB5! We hoped to build an interior that was elegant and that would age gracefully. A place where we felt comfortable, secure and surrounded by beautiful things.

Specification

CONSTRUCTION

RCD STATUS

- Conforms with the essential safety requirements of Directive 94/25EC
- or RCDII (2013/53/EU as appropriate
- Categorised A – “Ocean”

HULL AND DECK

- Wood epoxy composite construction
- Laminated ring frames positioned to make a strongback at the centerline
- to provide a single continuous structure
- Laid with double diagonal veneers epoxy bonded at 45 degrees and then epoxy sheathed
- Central frames carbon reinforced to carry mast, chainplate and high aspect lead keel loadings
- Topsides finish is white with a touch of green Awlcraft high gloss paint

- Cavita line and white boot top

- Name on transom in gold leaf

- Low maintenance Lignia deck on epoxied marine plywood substrate
- Solid sipo mahogany with Awlwood full gloss treatment deckhouse
- Solid sipo Mahogany trim in Awlwood and stainless steel

KEEL AND RUDDER

- Flattened lead bulb keel optimises high/low pressure separation; bolted to main structure
- Rudder multi laminated timber epoxy sheathed; solid stainless steel stock

Specification

DECK LAYOUT, EQUIPMENT, AND GROUND TACKLE

GENERAL

- Lignia laid deck
- Varnished sipo mahogany coachroof and other superstructure
- Varnished sipo mahogany coveringboards and capped bulwark rail
- Varnished sipo mahogany capped bulwark rail w. scupper drains
- Very large aft deck lazarette lockers
- Safe and comfortable cockpit
- All sheets and lines led aft to cockpit

FROM AFT

AFT DECK

- Ensign staff socket
- Panama fairleads port & starboard

- Associated line clutches

- Mainsheet traveller on custom stainless steel mount
- Spirit Yachts style glazed fan panels in roof port & starboard
- Lines enter concealed root to mast via deck skylight

MID DECK

- Large varnished sipo butterfly skylights over saloon, bar, and galley
- Incorporating 2 x dorade boxes with chromed cowl vents
- Concealed passage for lines to port & starboard
- Flush smoked hatch over galley to port
- Flush smoked hatch over wc/ shower compartment to starboard
- Panama spring lines fairleads port & starboard
- Associated stainless steel mooring cleats

- Associated stainless steel mooring cleats port & starboard
- Downwind sail sheet cheekblocks
- Socket for stowable tender launching davit system
- 3 x Large flush-hatch lazarette lockers
- Hatches have gas struts

#### COCKPIT

- Wide coamings, attractively shaped
- Varnished sipo mahogany uprights; Lignia laid tops
- 3 x Chromed Lewmar electric self tailing sheet winches port & starboard
- Lignia sole
- Mahogany 48-inch wheel with wheel brake
- "Binnacle" with analog and digital controls and nav instruments
- Ocean volt lever throttle controls
- Shore power socket
- Throttle control
- Lignia laid benches port & starboard
- Step down access under port bench to technical spaces and steering flat
- Varnished mahogany drop leaf dining table
- with internal drink locker; 2 x cup sockets

#### DECK / PILOT HOUSE

- Varnished solid sipo uprights
- 11 x Smoked glass ports
- Lignia laid roof
- Lean-to skylight hatches to aft cabins port and starboard
- Sheet and line sheaves outboard port & starboard
- 2 x Raymarine displays at cockpit bulkhead
- Varnished sipo sliding companionway hatch
- Raw teak grab rails port & starboard
- Chromed Lewmar electric self tailing line winches port & starboard

- Headsail sheeting tracks and cars port & starboard

#### MAST POSITION

- Line leads
- 2 x Line clutches
- Andersen 52 electric stainless steel self tailing winches port & starboard

#### FOREDECK

- Flush smoked hatch over wc/ shower compartment to port
- 2 x Flush smoked hatches over forecabin
- 2 x Folding padeyes on centreline
- Panama mooring fairleads port & starboard
- Associated stainless steel mooring cleats
- Swivel padeye for furling asymmetric
- Flush hatch sail locker with anchor locker access
- Gas struts
- 2 x downwind sails on furlers can be hoisted from/ stowed direct to locker

#### GROUND TACKLE

- Ultra Marine 'Ultra' 35 kg / 77 lb stainless steel bower anchor
- Stowed in custom split stemhead launcher
- Ultra Marine stainless steel Flip Swivel
- 10 mm chain: first 5 m, stainless steel; remaining 100 m, galvanised steel
- Fortress kedge anchor
- 10 m of 10 mm galvanised chain; 100 m 20 mm warp
- Lewmar vertical drum anchor windlass
- Remote and helm position controls

### Specification

## ACCOMMODATION AND DOMESTIC EQUIPMENT

#### GENERAL

- 6 berths in 3 cabins
- Walnut carpentry and wainscoting
- White finished deck head and bulkheads
- Lignia sole throughout
- USB sockets throughout

#### DECK/ PILOT HOUSE

- 360 degree views
- 3 x Steps down to upper level sole
- Red courtesy lighting
- Banquette to port; buttoned Galveston leather/ Harris Tweed Bracken Herringbone
- 'Trotter box' and lee cloths for use as passagemaking berth
- Watch keeper's Galveston leather Aston Martin DB5-style swivel chair
- Batteries access under
- Further 2 x steps down to lower level sole
- Banquette to starboard; buttoned Galveston leather uprights; Harris Tweed cushion
- 'Trotter box' and lee cloths for use as passagemaking berth
- Locker for lifejackets, grab bag, flares, first aid kit
- Deep fiddled sideboards to port& starboard
- Chart table forward from swivel chair
- Chart stowage under
- Chart reading light
- Navigation displays
- 2 x Cabin chromed reading lights

- (Second lever is for filtered drinking water from main tank)
- Extractor hood hatch
- Fisher & Paykel DD60SHTI7 brushed stainless steel dishwasher
- Top loading bin below sinks
- Firmdale Kit Kemp glasses
- EVA SOLO fitted knives
- Melamine passagemaking crockery
- Cooking equipment, utensils and cutlery

#### 'BAR'

- Custom natural zinc island 'breakfast bar'
- Removable fiddles
- 4 x Stainless steel and Galveston leather bar stools with back rests
- 3 x Handmade copper and brass "steamer" lights over
- 1 x Deckhead lamp
- 1 x Opening hatch in deckhead
- Wet locker draining to bilge to starboard

#### SALOON

- Ring frame and planking boat structure featured
- Tetrad 'L' Sofa to port
- Buttoned Galveston leather/ Harris Tweed Bracken Herringbone
- 2 x Tetrad Harris Tweed Bracken Herringbone Chesterfield armchairs
- Drinks locker between armchairs
- Range of drawers port forward bulkhead; custom stowage for:
- Kit Kemp 'Mythical Creatures' Collection Wedgwood crockery
- Shelves at forward starboard bulkhead

- 2 x Deckhead lamps

#### PASSAGE DOWN AND FORWARD OFFSET TO STARBOARD - TO LOBBY

- Ship's electrical panel

#### PORT AFT DOUBLE BERTH CABIN UNDER COCKPIT

- Double berth; split NaturalMat mattress for lee cloth
- Stowage under
- Hull finish as feature
- Wardrobe door with inset mirror/vanity unit
- Cedar of Lebanon wardrobe lining
- Drawer with fold down top for additional space when using the vanity unit
- 2 x Deckhead lamps
- 2 x Cabin chromed reading lights
- Cloth covered blinds fitted with easy to use stainless steel fixings
- Half skylight hatch in deckhead
- Heating/ aircon controls

#### STARBOARD AFT CABIN ('Sea Cabin')

- 2 x Pullman style bunks with lee cloths
- NaturalMat mattresses
- Cave locker at foot of top bunk
- 3 x Drawers
- Raymarine i70S display
- Deck head lamp
- 2 x Cabin reading lights
- Cloth covered blinds fitted with easy to use stainless steel fixings
- Half skylight hatch in deckhead
- Heating/ aircon controls

#### AFT WC COMPARTMENT TO STARBOARD

##### WC/ Shower compartment to port

- Planus electric fresh water flush toilet
- Fold down seat over
- London Basin Company 'Carmel' porcelain countertop sink
- Timage mixer tap
- Lockers outboard and under
- Lignia sole with shower tray under
- Shaving mirror light.
- Shaver AC outlet
- Mirrors
- 2 x Hooks
- 1 x Deckhead lamp
- 1 x Opening hatch in deckhead

#### FORWARD TO GALLEY/ BAR/ SALOON

##### 'U' SHAPED GALLEY TO PORT

- Custom natural zinc top surfaces
- Fore and aft gimballed cooker outboard incorporating:
- 4 x Burner electric induction hob; deep fiddles and pan holders
- Miele microwave oven
- Stowage over, outboard and under
- Shelves for glasses and cups stowage
- Top loading 40 L freezer outboard and aft
- 2 drawer fridge
- Profitec Pro 800 coffee machine and grinder
- 1.5 Bowls GN Espace sink
- Osmio Bella 304 stainless steel 3-Way Tri-flow mixer tap

- Large butterfly skylight in deckhead
- 4 x Deckhead lamps (dimmable)
- Passage forward offset to starboard of mast

#### OWNER EN-SUITE CABIN FORWARD

##### Desk and lockers/ hanging wardrobe area to starboard

- Cedar of Lebanon wardrobe lining
- Swing out Harris Tweed Bracken Herringbone stool
- Lift up vanity locker with marquetry detailing
- Deckhead lamp
- 1 x Opening hatch in deckhead
- WC/ Shower compartment to port
- Planus electric fresh water flush toilet
- Fold down seat over
- London Basin Company 'Agnes' porcelain countertop sink
- Timage mixer tap
- Lockers outboard and under
- Raw teak sole with shower tray under
- Shaving mirror light
- Shaver AC outlet
- Mirrors
- 2 x Hooks
- 1 x Deckhead lamp
- 1 x Opening hatch in deckhead
- Cloth covered blind fitted with easy to use stainless steel fixings
- Double berth with stepped sole access
- NaturalMat mattresses, split for lee cloth
- Drawer stowage under
- Ring frames and planking boat structure featured
- Tetrad Galveston leather upholstered headrest
- 2 x Bedside lockers
- 2 x Cabin reading lamps
- LED concealed lighting
- 1 x Deckhead lamp
- Fore/ escape hatch in deckhead
- Cloth covered blind fitted with easy to use stainless steel fixings
- Raymarine MFD
- Samsung 'The Frame' TV screen at port aft bulkhead
- Mirrors
- Heating/ aircon controls
- WC/ Shower compartment to port
- Planus electric fresh water flush toilet
- Fold down seat over
- London Basin Company 'Carmel' porcelain countertop sink
- Timage mixer tap
- Lockers outboard and under
- Lignia sole with shower tray under
- Shaving mirror light
- Shaver AC outlet
- Mirrors
- 2 x Hooks
- 1 x Deckhead lamp
- 1 x Opening hatch in deckhead



RIG

- Fractional bermudan sloop rig
- Set up for masthead and fractional downwind sails
- Hall carbon spars
- Mast with 3 x sets of swept back spreaders
- V-boom & lazy jacks mainsail stacking system
- Spinnaker pole
- LED Boom light & spreader lights
- Nitronic rod rigging
- Hydraulic vang, outhaul and backstay
- Off the wind pad eye fitted forward of chainplate outboard
- All navigation lights in LED including Tricolour and downward spreader lights.
- Tri-sail and spinnaker tracks and hardware
- Bartels electric headsail furler

SAILS

- 4T FORTE™ Recyclable by OneSails
- Fully battened mainsail on Harken 'Switch' mast track
- Jib
- Flat furling reacher in custom bag for easy deployment
- Asymmetric
- Symmetric spinnaker

CANVASWORK

- Bimini with stainless steel legs
- Over boom sun awning
- Full cockpit cover
- Heavy-duty fleece lined Sunbrella covers by One Sails for:
- Deckhouse
- Helm
- Capping rail
- Mainsail
- Headsail (sock)
- Flagstaff
- Boarding ladder
- Swim ladder
- Stanchion posts
- Passerelle
- Also
- Mast gaiter

Specification

MECHANICAL, ELECTRICAL, AND TANKAGE

MECHANICAL/ PROPULSION/ STEERING

- 2 x Ocean Volt SD15 ServoProp electric regenerating propulsion systems
- Twin variable pitch, feathering propellers
- Most recent drives service (oil change; prop clean; bearing maintenance): Sept. 2024
- Side Power 24-volt tunnel bowthruster with trip fuse and breaker with easy access
- Jeffa chain and wire steering system

MECHANICAL/ ELECTRICAL

- Fischer Panda 18 kW 48 V generator (aft of propulsion units)
- Halyard dry exhaust system

ELECTRICAL

- Voltage Systems:
- 12 V, 24 V, 48 V DC, and 230 V AC systems
- 230 V ring main and shore power inlet
- Tinned marine grade wiring throughout
- Battery Banks:
- 48 V propulsion bank consisting of 24 x Valance lithium ion batteries totaling 21 kW
- 24 V Service bank consisting of 2 x Victron AGM 200 Ah batteries
- 12 V generator start battery
- Battery link - allows domestic batteries to parallel to start generator
- Battery Charging:
- 48 V Propulsion system via Victron Quattro charger/inverter; supply shore power/ generator
- 24 V Service bank via 2 x Powernet DC-DC converters; supply from propulsion batteries

- 12 V generator start battery charged from generator alternator Shore Power
- 32 A Power lead with RCBO and galvanic isolator fitted near yacht socket

TANKAGE AND ASSOCIATED

- Fuel:
- Total capacity 400 L / 88 Gal
- Gauge at electrical panel
- Fresh water:
- Total capacity 430 L / 94.58 Gal)
- Gauge at electrical panel
- In line filter on water supply to galley tap for fresh drinking water
- Xylem Max Pressure system
- Direct feed from the watermaker direct into aft heads basin
- Hose attachment and deck shower in aft locker and at bow
- Watermaker:
- Schenker SART 60 - Digital 12/24 V DC 60 L/ hour watermaker (uncommissioned)
- Hot Water
- Diesel heater to heat water or via generator/battery system immersion
- Waste Water
- Gravity fed black water tanks at both WC compartments
- Shower and sink waste can be diverted to black water tanks

HEATING/ AIRCON

- Webasto centralised air conditioning system
- 50,000 BTU compressor chiller, diesel heater and 5 air handlers
- Reverse cycle air conditioning throughout using a waterborne system

OTHER

- Marilon plastic seacocks

Specification

## NAVIGATION AND COMMUNICATIONS

### NAVIGATION

#### At Deckhouse:

- Raymarine eS9Plotter MFD with autopilot control

#### At Helm:

- Ritchie Powerdamp 5 inch compass on binnacle
- Raymarine eS9 Plotter.

- MFD & p70 Autopilot head unit

- Twin Oceanvolt control screens

- Autopilot control

#### At Cockpit:

- 2 x Raymarine i70 on aft face of deckhouse (allows for 2 further screens)

#### Other Locations:

- Radome mounted at mast.

- MFD in owners cabin port side

- i70S display in aft starboard cabin

- AIS send and receive

### COMMUNICATIONS

#### At Deckhouse:

- 1 x i70 & Ray260 VHF

#### At Helm:

- VHF remote unit

#### At Saloon:

- Iridium 9555 Sat Phone with external antenna

---

### Specification

## SAFETY

- Whale Bilge IC Waste pump in five bilge areas:

- forepeak, main accommodation space, motor space, steering space, lazarette

- Manual bilge pump operated from cockpit for the main saloon bilge

- 5 x Electric bilge pumps auto or manual with auto float switches at:

- Forepeak bilge (emptying to anchor locker)

- Main accommodation x 2

- Motor space

- Aft lazarette

- Emergency tiller

- LED Navigation lights

- Removable guard wires and stanchions

- Jack stays fitted on deck centreline

- 6-Person liferaft

- 3 x Powder fire extinguishers

- Fire blanket in galley

- Smoke alarm at galley

---

### Specification

## ENTERTAINMENT

- TV antenna on mast.

- 4G & Wifi antenna and internal Wi-Fi transmitter

- Peplink LAN

---

### Specification

## OTHER EQUIPMENT

- Crane & winch for tender launch and recovery

- 232 Bauer dive compressor with storage spaces for 2 x bottles

- 6 x Fenders with webbing and soft leather protection

- 2 x Long and 2 x short mooring lines with soft leather protection

- Sheepskin lined capping rail fender cleats

- Tender inflator

- Torqeedo charge point

- Carbon passerelle with fixings at transom

- Custom boarding ladder

- Custom swim ladder

- Ensign staff

- 2 x Leather winch handle pockets

- 8 x Leg custom Jacobs yacht cradle

---

### Disclaimer

These particulars have been prepared from information provided by the vendors and are intended as a general guide. The purchaser should confirm details of concern to them by survey or engineers inspection. The purchaser should also ensure that the purchase contract properly reflects their concerns and specifies details on which they wish to rely.

---

SPIRIT 65DH 65 FT BERMUDAN SLOOP 2021

---

Specification  
GALLERY

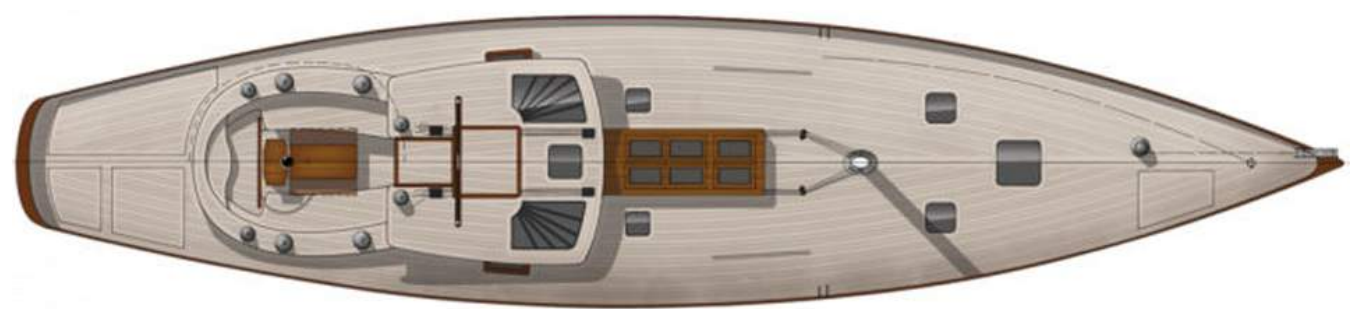










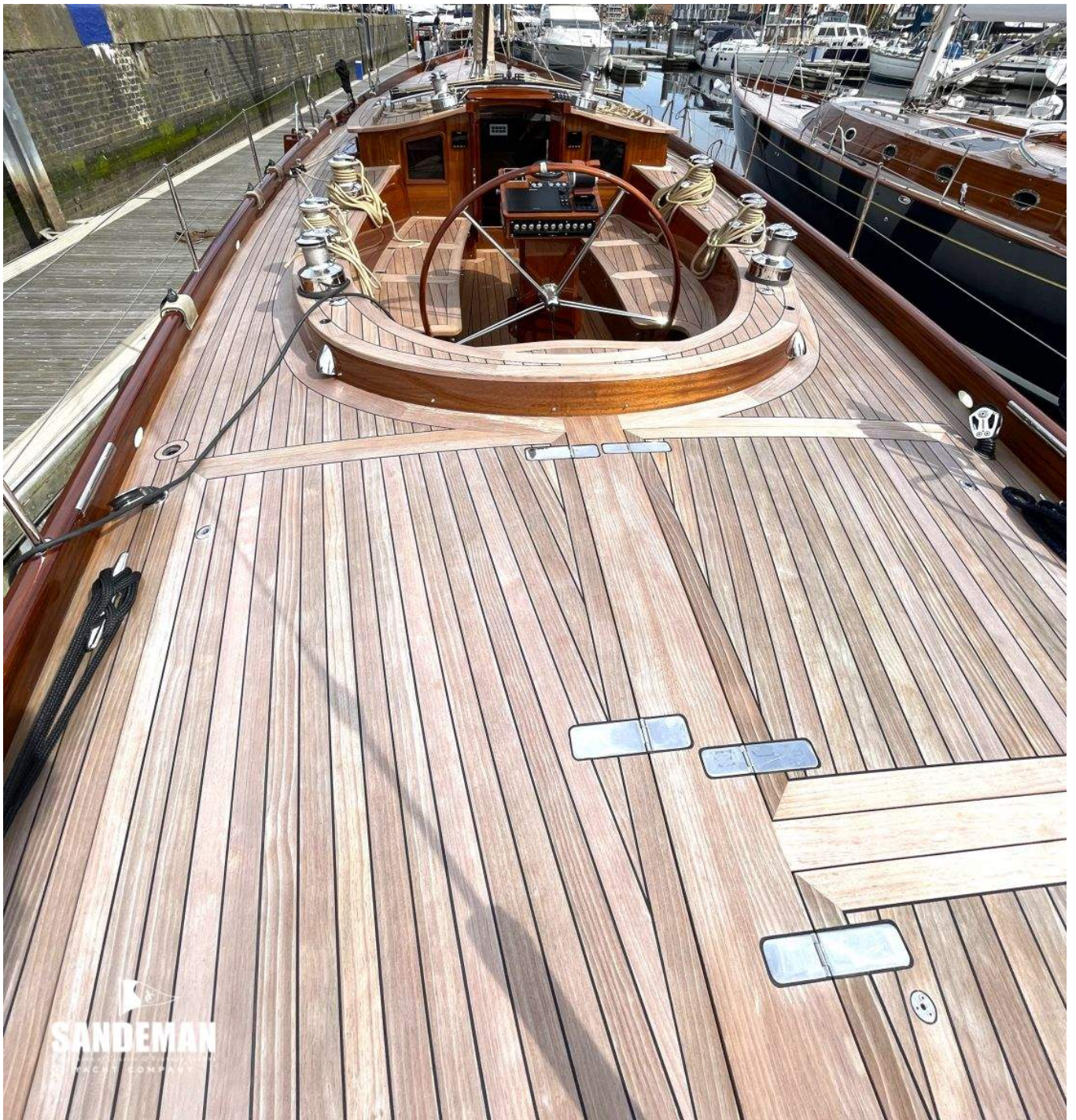






  
**SANDEMAN**  
BARRISTERS OF CLASSIC & VINTAGE YACHTS  
YACHT COMPANY





  
**SANDEMAN**  
YACHT COMPANY

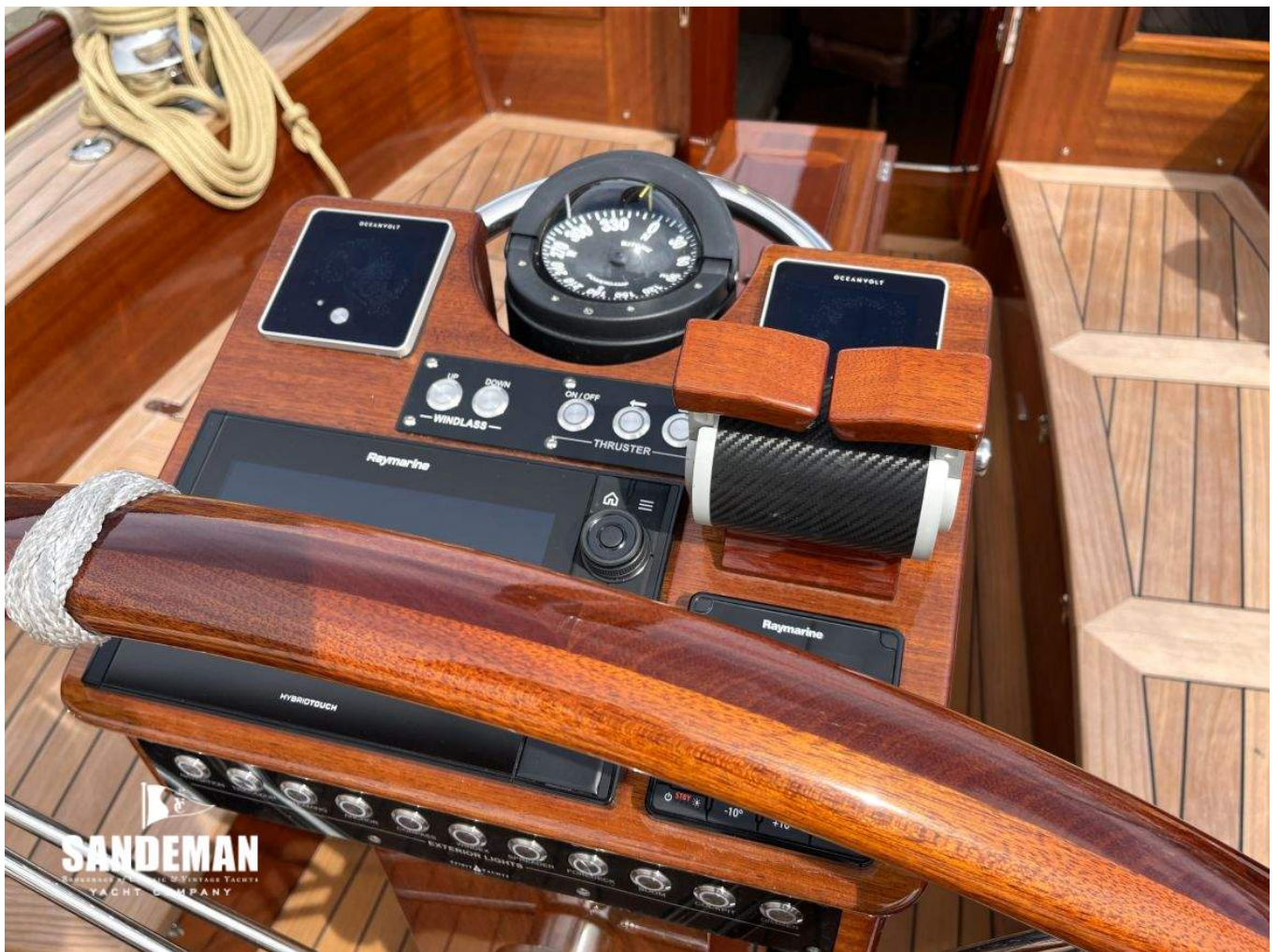












**SANDEMAN**  
BOATWORK & CLASSIC VINTAGE YACHTS  
YACHT COMPANY



**SANDEMAN**  
BOATWORK & CLASSIC VINTAGE YACHTS  
YACHT COMPANY

















  
**SANDEMAN**  
BROKERAGE OF CLASSIC & VINTAGE  
YACHT COMPANY





  
**SANDEMAN**  
DESIGNERS OF CLASSIC MOTOR YACHTS  
YACHT COMPANY



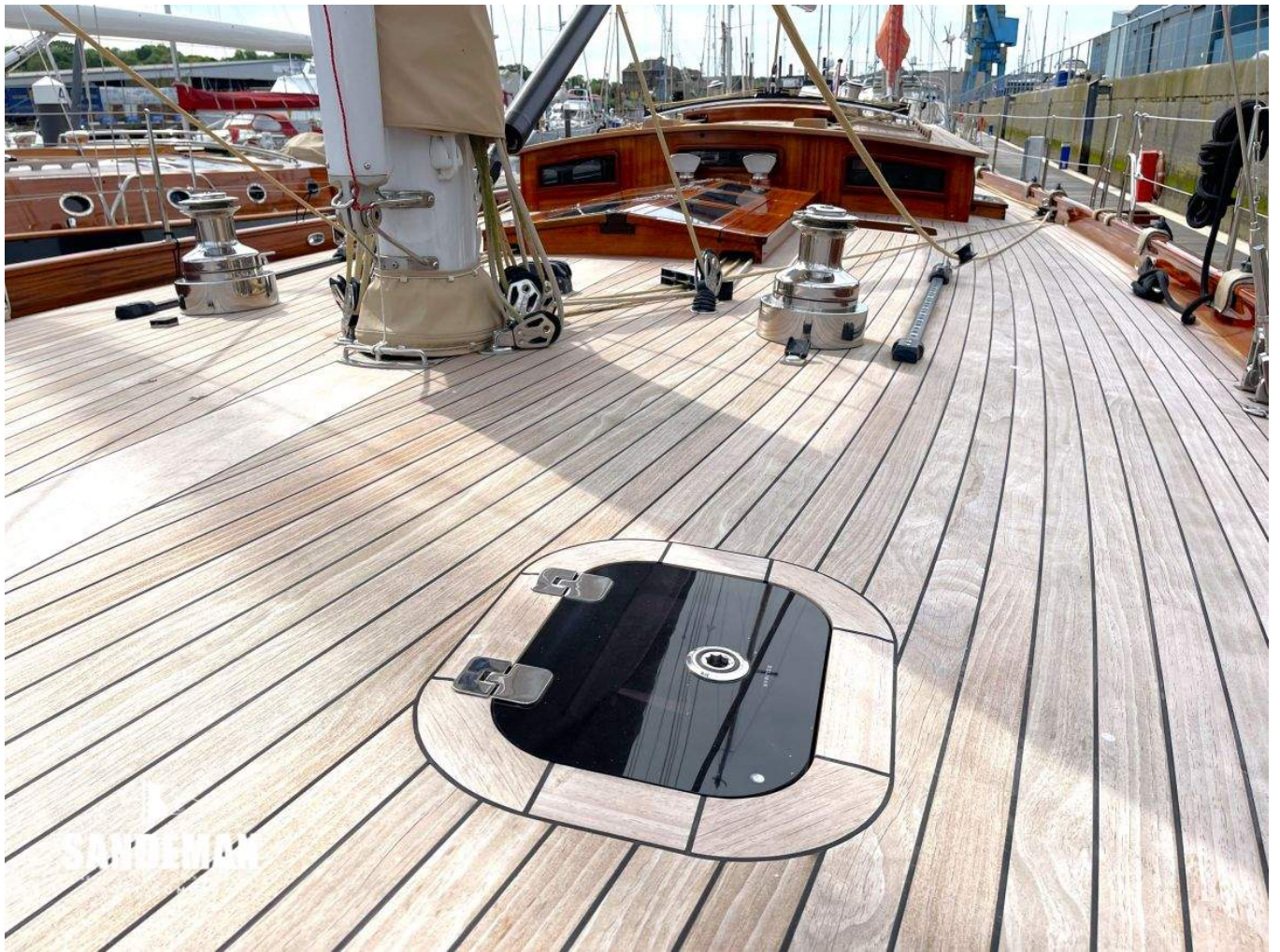






  
**SANDEMAN**  
SAILBOAT DECKS





















  
**SANDEMAN**  
BANKERSHIP OF CRAFTSMANSHIP  
YACHT COMPANY













  
**SANDEMAN**  
BROKERAGE OF CANALS & YACHTS  
YACHT COMPANY























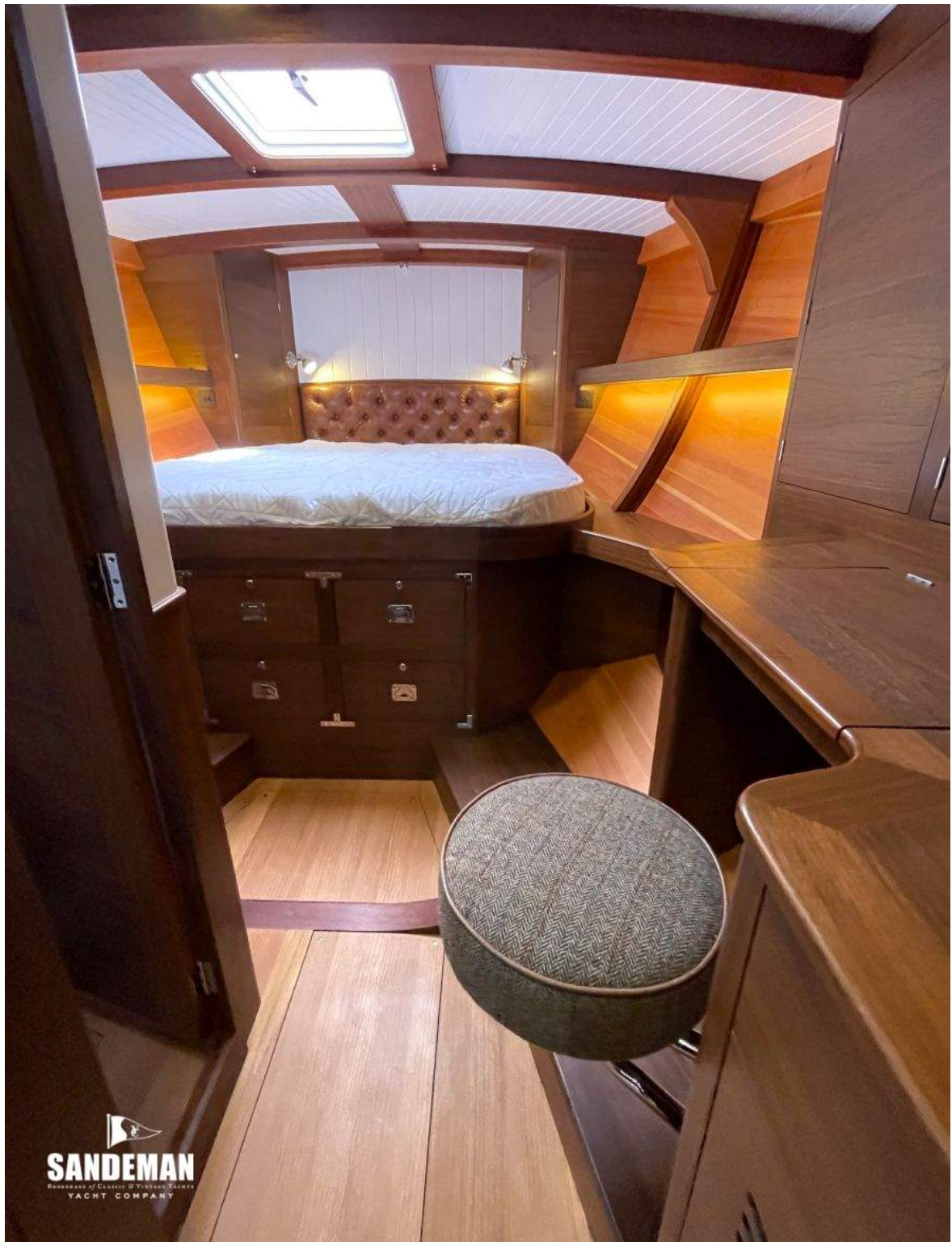






  
**SANDEMAN**  
Boutique Custom & Vintage Yachts  
YACHT COMPANY













  
**SANDEMAN**  
PROGRESSIVE CLASSIC YACHTS  
YACHT COMPANY





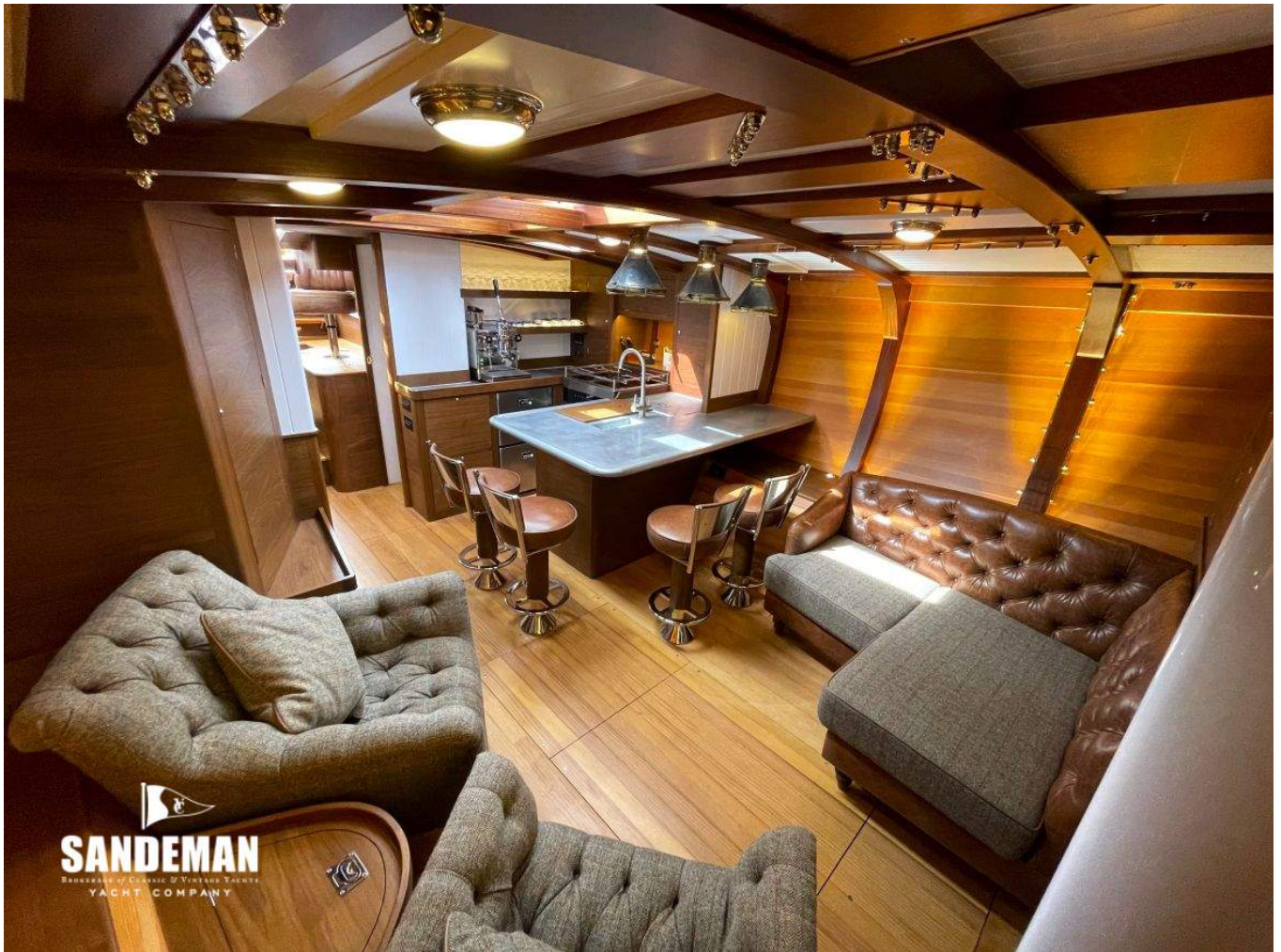
































  
**SANDEMAN**  
Restoration of Classic & Vintage Yachts  
YACHT COMPANY







