

SANGERMANI 73 FT BERMUDAN KETCH 1957/2019 - SOLD



Specification

SAHIB

SANGERMANI 73 FT BERMUDAN KETCH 1957/2019

Designer	Cesare Sangermani Sr	Length	53 ft 2 in / 16.2 m	Engine	IVECO 8460 SM19
Builder	Cantieri Sangermani	waterline		Location	Italy
Date	1957	Beam	14 ft 9 in / 4.5 m	Price	Sold
Length overall	74 ft 6 in / 22.7 m	Draft	8 ft 6 in / 2.6 m		
Length deck	72 ft 10 in / 22.2 m	Displacement	32.6 Tonnes		
		Construction	Mahogany on oak, elm, acacia & pitch pine		

These details are provisional and may be amended

Specification

BROKER'S COMMENTS

From the 1940s into the early 1990s, together with a band of impeccable artisans, the Sangermani family at Lavagna near Genoa was responsible for a stream of excellence in boat designing and building of the highest quality imaginable. At launching, SAHIB was the second largest yacht they'd built, and may reasonably be considered the cruiser-racer prototype for the 1965 Fastnet Race winner and record holder GITANA IV. Rescued from an ignominious fate and restored magnificently under present ownership, SAHIB is a dream ship in every sense: ready for stylish adventures with family and friends.



• SANDEMAN YACHT COMPANY •  
• Brokerage Of Classic & Vintage  
Yachts •

[www.sandemanyachtcompany.co.uk](http://www.sandemanyachtcompany.co.uk)

## SANGERMANI 73 FT BERMUDAN KETCH 1957/2019

### Specification

## HISTORY

Cantiere Sangermani Yard No. 94

"I am not capable of making boats only for money... I build boats with my heart. I dream of them at night. I stroke them... like a poet does his verse. To me, every boat is like a work of art. It can't leave my shipyard until it is perfect" - Cesare Sangermani, 1974

To require rescue from close to oblivion is a rare fate for a Sangermani; just the name is enough to stir the imagination as, for example, Stradivari might. It certainly wouldn't have been imagined in 1956 when Guido and Silvio Pellerano commissioned Cesare Sangermani Senior to design this superb 73ft RORC Class I cruiser-racer ketch. When launched at Lavagna, east of Genoa, in the spring of 1957, SAHIB became the second largest yacht designed and built there under the direction of Cesare and Piero Sangermani. Many more would follow.

A later owner was Amalia "Maly" Levi Da Zara Falck, wife of Giovanni Falck, second son of the founder of the huge Italian steelmakers. Amalia lived at the beautiful Montelattaia estate near Grosseto, Tuscany, and sailing tours would have been in the waters of the Tyrrhenian Sea from SAHIB's home port further north, Marina di Carrara. Her son Giorgio Falck was a Sangermani client: a prolific and adventurous yacht owner, and veteran of three Whitbread Round the World races in GUAIA (1973-74), ROLLY GO (Sangermani, 1981-82) and GATORADE (ex NZI Enterprise, 1989-90).

In 2015, SAHIB, with her unmistakable "three dots" (Morse code "S" for Sangermani) cove line decoration proving her provenance, was found in a distressed state at the port of Agropoli, south of Naples, and the rescue process described elsewhere here commenced. If ever a yacht deserved it, it was this Sangermani gem.

©2023 Iain McAllister/ Sandeman Yacht Company Ltd.

### Specification

## RESTORATION / REFIT

2019

By

- Antico Cantiere del Legno Aprea
- Elmar Global Service

BY ANTICO CANTIERE DEL LEGNO APREA

### UNDERBODY AND TOPSIDES

- Replacement and reconstruction of laminated iroko forefoot and sternpost
- Butting and closure of new planks at forefoot and stem
- New apron
- New keelson
- New battens and stringers
- Stainless steel floors replacing original mild steel
- New mast steps
- Fitting of a stainless steel beam keelson
- Restoration of all hull scuppers
- Inspection of all the hull planks
- Hull planks tightening
- Disassembly of rudder blade; stern tube tightness check
- Assembly of fittings with copper riveting

### MAIN DECK

- New deck beams and associated stiffening

- All fittings chromium plated/ polished
- Inspecting and polishing chainplates; bolts replaced
- Reconstruction of stainless steel fittings

### RIG

- Masts previously rebuilt by Antico Cantiere del Legno Aprea 2013

### Restoration 2019

- Masts dismantled and restored
- 15 x coats varnish
- Masts fittings oven painted
- New rig terminals
- Rigging screw checks

Many of the larger authentically raised-head and slotted screws and bolts used in the restoration were hand made by the shipyard, being nowadays non stock items with suppliers.

### BY ELMAR GLOBAL SERVICE

- Design and realisation new systems
- Electrical - to UNI EN ISO 10133:2002 and 13297:2002 for pleasure craft
- Electronics/ instrumentation/ communications
- Water and fuel tankage and associated systems

- New mast partners
- New deck houses
- New beam shelf
- New covering board
- New sheerstrake
- New gunwale
- New cockpit seats to original drawings
- Skylights restored including chromium plating
- New composite raw teak laid on ply deck

#### DECK FITTINGS

- Winches overhauled; chromium plated/ polished

- Domestic appliances, comfort and entertainment
- Fire fighting/ safety systems
- Mechanical system, including zero-hours complete overhaul of 2003 engine

#### Specification

### CONSTRUCTION

- Mahogany on durmast oak, elm, acacia and pitch pine
- Teak deck carpentry
- Raw teak decklaid on plywood composite deck

#### Specification

### DECK LAYOUT, EQUIPMENT AND GROUND TACKLE

- New teak laid deck
- Mahogany varnished covering board, taffrail, bulwarks/ toerail
- Low location lighting along the entire yacht

#### FROM AFT

#### AFT DECK

- Chromed fairleads at taffrail port and starboard
- Lewmar spinnaker sheave blocks on stainless steel mounts port and starboard
- Stainless steel mizzen sheet block
- Flush lazarette hatch
- Teak and chromed mooring cleats port and starboard of hatch
- Chromed mizzen runner Highfield levers port and starboard

#### COCKPIT

- Raised varnished coaming running aft from trunk cabin
- Ship's wheel
- Chromed compass binnacle
- Riviera "White Star" steering compass
- Kobelt engine control to starboard
- Engine instrumentation to port
- Helm seat with space for three at wheel
- Raw teak cockpit seating port and starboard
- Deep cockpit lockers under
- Winches on stainless steel pedestals port and starboard
- 2 x Lewmar 70 primary
- 2 x Lewmar 56 secondary

#### MIZZEN MAST POSITION

#### TRUNK CABIN

- Lewmar stainless steel mainsheet blocks and traveller
- Lewmar 65 mainsheet winch mounted on trunk cabin next to traveller
- Main boom gallows on aft trunk cabin

Genoa track and stainless steel cars on toerail port and starboard

#### DOGHOUSE

- In Laurent Giles style
- Raw teak grab rails port and starboard
- Teak decking on saloon roof
- Soft patch for engine removal
- 2 x Butterfly skylight hatches

#### MAIN MAST POSITION

- Butterfly skylight hatch
- 2 x Lewmar 55 winches either side of skylight
- Raised forehatch to fo'c'sle
- 2 x Varnished Dorade boxes either side of forehatch
- 2 x Chromed ventilator cowls
- 2 x Chromed/ teak mooring cleats port and starboard
- Adjustable inner forestay
- Lofrans 1500 W anchor windlass
- 1 x Vertical and 1 x horizontal warping drums
- 1 x horizontal chain gipsy
- Stainless steel Panama fairleads port and starboard
- 60 kg Bruce anchor on bow roller

#### Specification

### ACCOMMODATION AND DOMESTIC EQUIPMENT

#### VIA COMPANIONWAY INTO LAURENT GILES STYLE DECK SALOON

- Courtesy lighting in every cabin
- Custom light switches
- Hinged, varnished/ glazed door and companionway sliding hatch
- Down 4 x steps
- U-shaped seating

- Bench seat/ banquette with 2 x lockers under

#### FORWARD TO 2nd GUEST CABIN

- Large double berth to port
- Drawers under
- Lockers outboard to port

- Saloon table
- Lockers for glasses and plates to starboard
- US Navy ship's clock
- 3 x Opening forward-facing windows
- 1 x Opening window aft
- Brushed stainless steel ship's isolator panel
- VDO analog electrical and tank level gauges
- Generator control
- Bi-fold window to galley
- 2 x Bulkhead lights
- 3 x Deckhead spotlights

MOVING FORWARD (see below for moving aft)

- Down 3 x steps

#### GALLEY TO STARBOARD

- Brushed stainless steel galley top
- Large sink; mixer tap; salt water tap
- Miele 60cm oven
- Miele 4 x burner electric hob
- Miele extractor hood
- Miele dishwasher
- Plate racks
- Lockers and drawers
- Butterfly skylight hatch in deckhead

#### OPPOSITE GALLEY TO PORT

#### 2 x BERTH GUEST CABIN

- Lower bunk can be intimate double
- Large hanging wardrobe
- Lockers under lower berth
- Butterfly hatch in deckhead
- 2 x Bulkhead lights

#### MOVING FORWARD

#### TO PORT - LARGE WALK-IN WC COMPARTMENT

- Very large shower area with teak grate
- Porcelain sink with mixer tap
- Planus electric toilet with built-in bidet
- 2 x Large lockers
- Butterfly hatch in deckhead

#### TO STARBOARD

- 2 x Large lockers
- Vitrifrigio refrigerator

- Banquette to starboard
- Lockers outboard to starboard
- Large hanging locker
- Butterfly hatch in deckhead
- 2 x Bulkhead lights

#### FORWARD TO WC COMPARTMENT SHARED WITH FO'C'SLE

- Fo'e'sle/ crew & Guest Cabin
- Porcelain wash basin to starboard; mixer tap
- Locker outboard and under sink
- Planus electric toilet with built-in bidet
- Shower with teak grate

#### FO'C'SLE

- Raised forehatch in deckhead
- 2 x Pipe cots
- 2 x Bulkhead reading lights
- Chain locker forward

#### MOVING AFT FROM DECKHOUSE

- Down 3 x steps

#### TO STARBOARD

- Large locker to starboard; sliding louvred door
- Raymarine VHF
- 2 x Bench seats/ banquettes; stowage under
- Opening port in trunk cabin

#### TO PORT - OWNER'S EN-SUITE WC COMPARTMENT AND SHOWER

- Porcelain wash basin with mixer tap
- Planus electric toilet with built-in bidet
- Shower with teak grate
- 2 x Large lockers
- Opening port in trunk cabin

#### MOVING AFT TO OWNER'S CABIN

- Bureau to starboard/ navigation area
- Banquette to starboard; book case outboard
- Large double berth to port; lockers under
- Large centreline hanging locker
- Clothes locker with louvred doors
- 4 x Opening ports in trunk cabin
- 2 x Bulkhead lights

### Specification

## RIG, SAILS AND CANVASWORK

#### RIG

- Masts rebuilt by Antico Cantiere del Legno Aprea 2013
- Restored by them 2019
- Spreader lights

#### Main Mast

- 2 x spreaders
- 3 x Lewmar 43 halyard winches
- 1 x Lewmar stainless steel & bronze captive main halyard winch
- 1 x Lewmar 16 winch

- Main sheets led to block at fwd of mizzen

#### Mizzen Mast

- 2 x spreaders and strut
- Lewmar 43 halyard winch

#### Rigging 2013

- New rig terminals 2019
- Bronze rigging screws, leathered

#### SAILS



#### Main Boom

- 1 x Lewmar reefing pennant winch

#### Ratsey & Laphorn (2020)

- Mizzen
- Mainsail
- Yankee

#### CANVASWORK

- TBA

#### Specification

### MECHANICAL, ELECTRICAL AND TANKAGE

#### MECHANICAL

- Main Engine 6 cylinder IVECO Aifo 8460 SM19 140kW (2003, complete overhaul 2019)
- On July 2019 post-restoration sea trials, engine performances comparable with new
- Mechanical Fuel Injection with injectors and Bosch pump
- Turbocharged with intercooler
- Double circuit cooling system
- Fischer Panda 15kW electric generator
- Engine room air extractors

#### ELECTRICAL

##### DC 12V & 24V

- Electric generator battery 12V/ 100Ah
- Service batteries 24V/ 540 Ampere AGM by Mastervolt
- Main Engine batteries 24V / 360 Ampere
- Electronic battery switches; manual control option
- Battery charger Mastervolt Charge Master 24/100- 3 for engine and general services

#### AC

- 230 V from shore connection
- 230 V from electric generator
- Shore connection with 15 m neoprene cable
- 230V and USB VIMAR Eikon series sockets in every room/cabin

#### TANKAGE

- Multi-layer composite water piping with thermal insulation
- 80 L Hot water boiler with 1200 W immerser
- Cillit Aqalou drinking water processing device
- Cold-sparkling-ambient temperature
- Schenker SMART 100 watermaker
- Gianneschi ECOINOX pumps
- Stella Italica Faucets
- Black water tank
- Grey water tank

#### AIR CONSITIONING

- CLIMMA: 2 x compressors; 5 x fan coils; independent control

#### Specification

### NAVIGATION, ELECTRONICS AND COMMUNICATIONS

#### NAVIGATION/ ELECTRONICS

- Riviera "White Star" steering compass
- Marco horn and whistle
- Raymarine Axiom 9" RV navigation system; multi-function display
- Raymarine 3D RealVision through-hull bronze transducer
- Raymarine i60 Wind station

- Raymarine Quantum Q24C radar
- Raymarine Autopilot
- Raymarine EmpirBus controls

#### COMMUNICATIONS

- VHF Raymarine with external Wi-Fi speaker/ receiver
- Glomex TV antenna
- Glomex VHF antenna

#### Specification

### SAFETY

#### BILGE PUMPING

- Electric manual and automatic control

- Fire pump with hose in the cockpit
- Portable Firefighting extinguishers

#### FIREFIGHTING

- MAX MARINE aerosol firefighting system in engine room

#### Specification

### OTHER EQUIPMENT

- Zodiac 200 AERO Tender
- 3 HP outboard motor
- Samsung 28 in LED TV
- Fusion hi-fi system

- Fenders with socks and leathered caprail rail hooks

#### Specification

## IMAGE CREDIT

Photos & Video: Francesco

Rastrelli

---

### [Disclaimer](#)

These particulars have been prepared from information provided by the vendors and are intended as a general guide. The purchaser should confirm details of concern to them by survey or engineers inspection. The purchaser should also ensure that the purchase contract properly reflects their concerns and specifies details on which they wish to rely.

---

SANGERMANI 73 FT BERMUDAN KETCH 1957/2019

---

Specification  
GALLERY



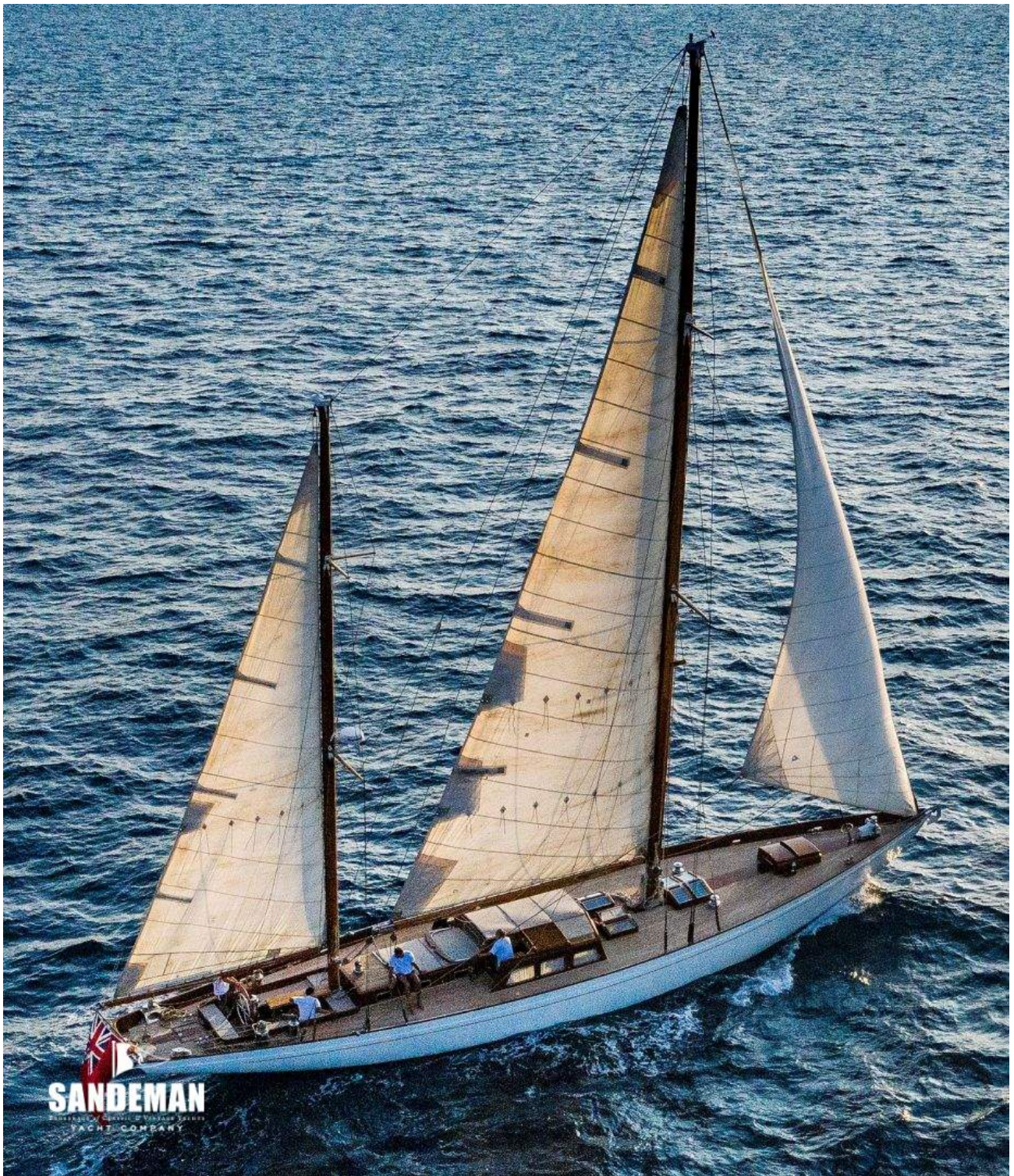






































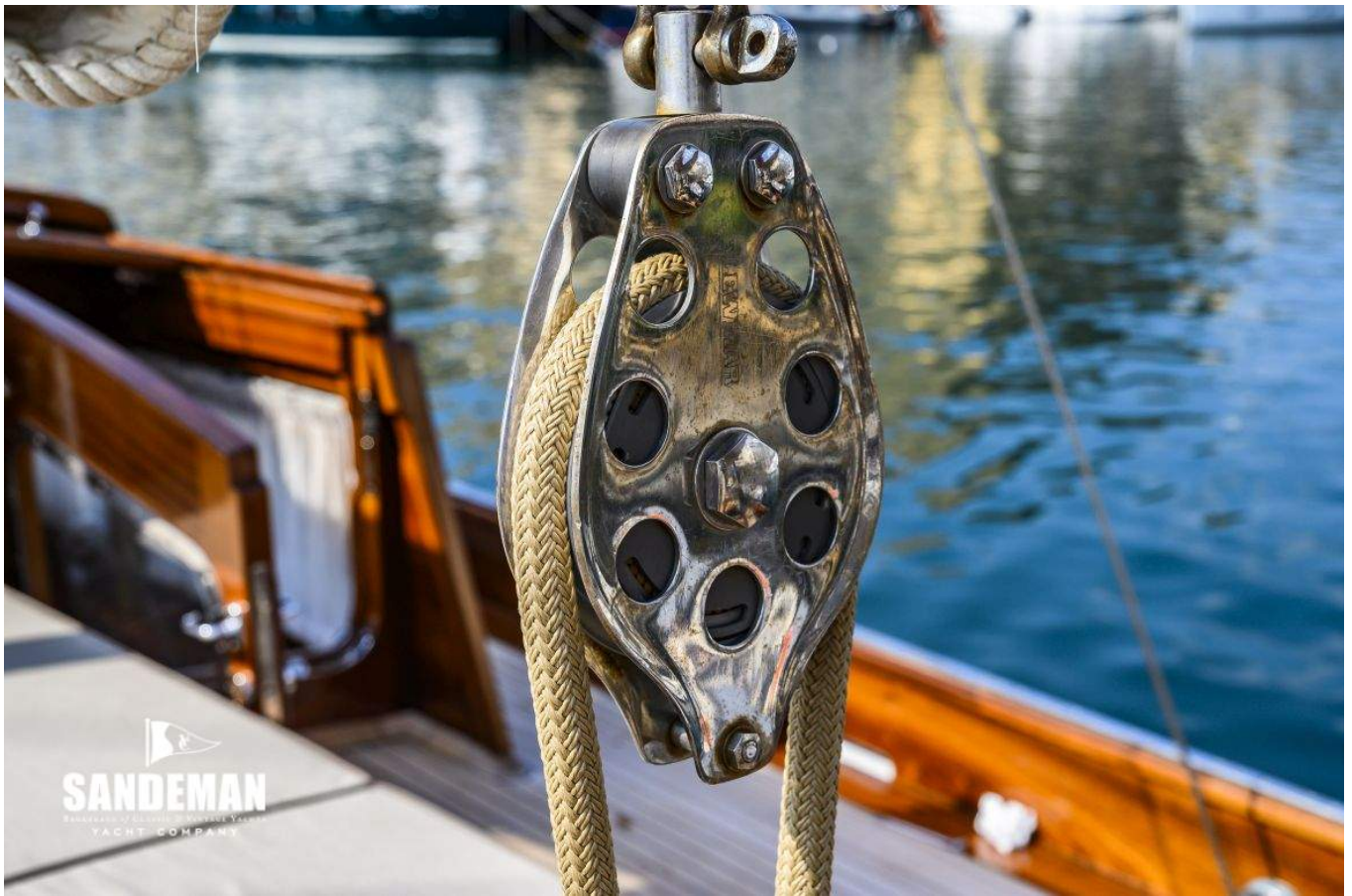
  
**SANDEMAN**  
REPAIRS OF CLASSIC & VINTAGE YACHTS  
YACHT COMPANY



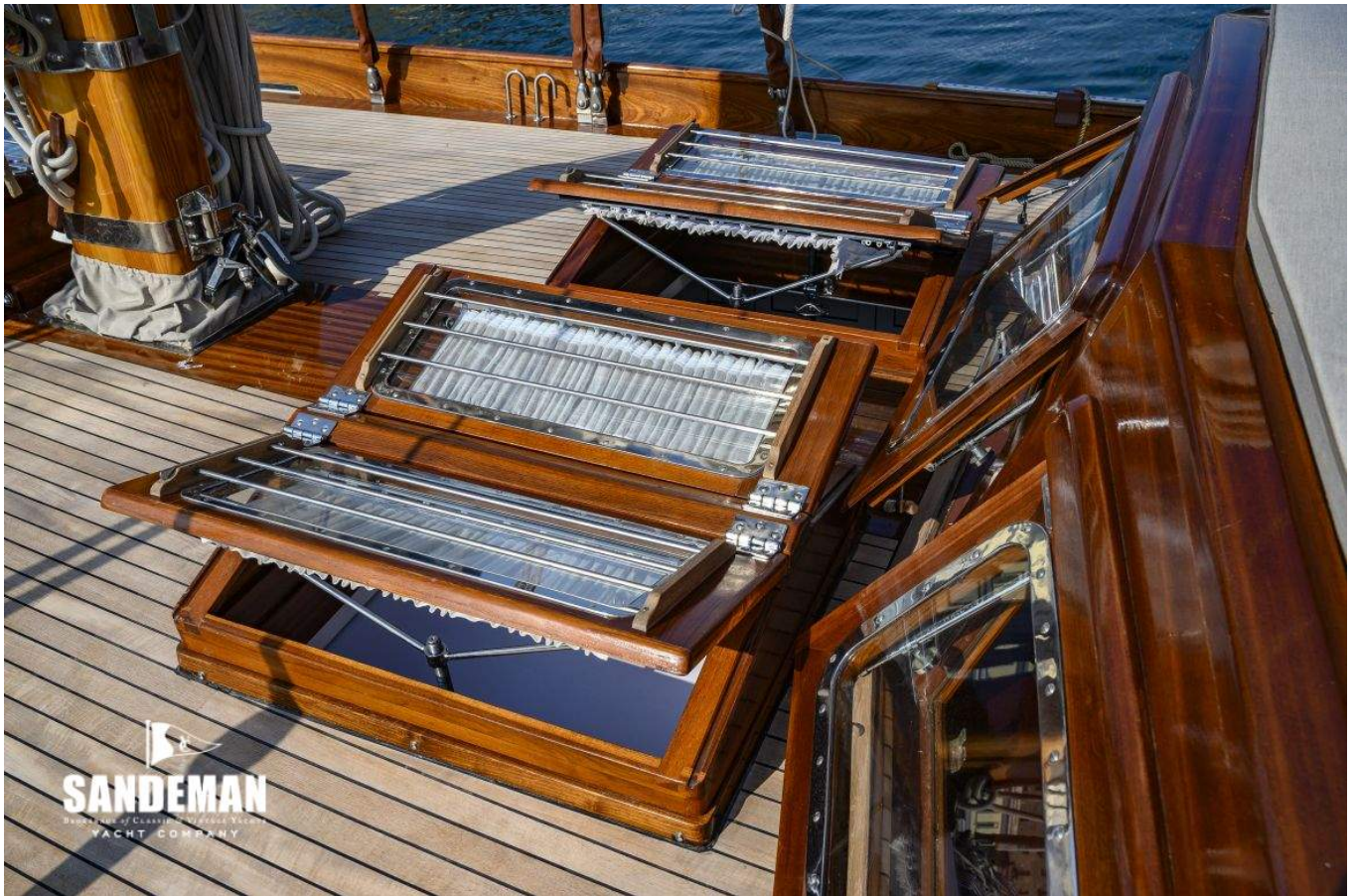


  
**SANDEMAN**  
YACHT COMPANY

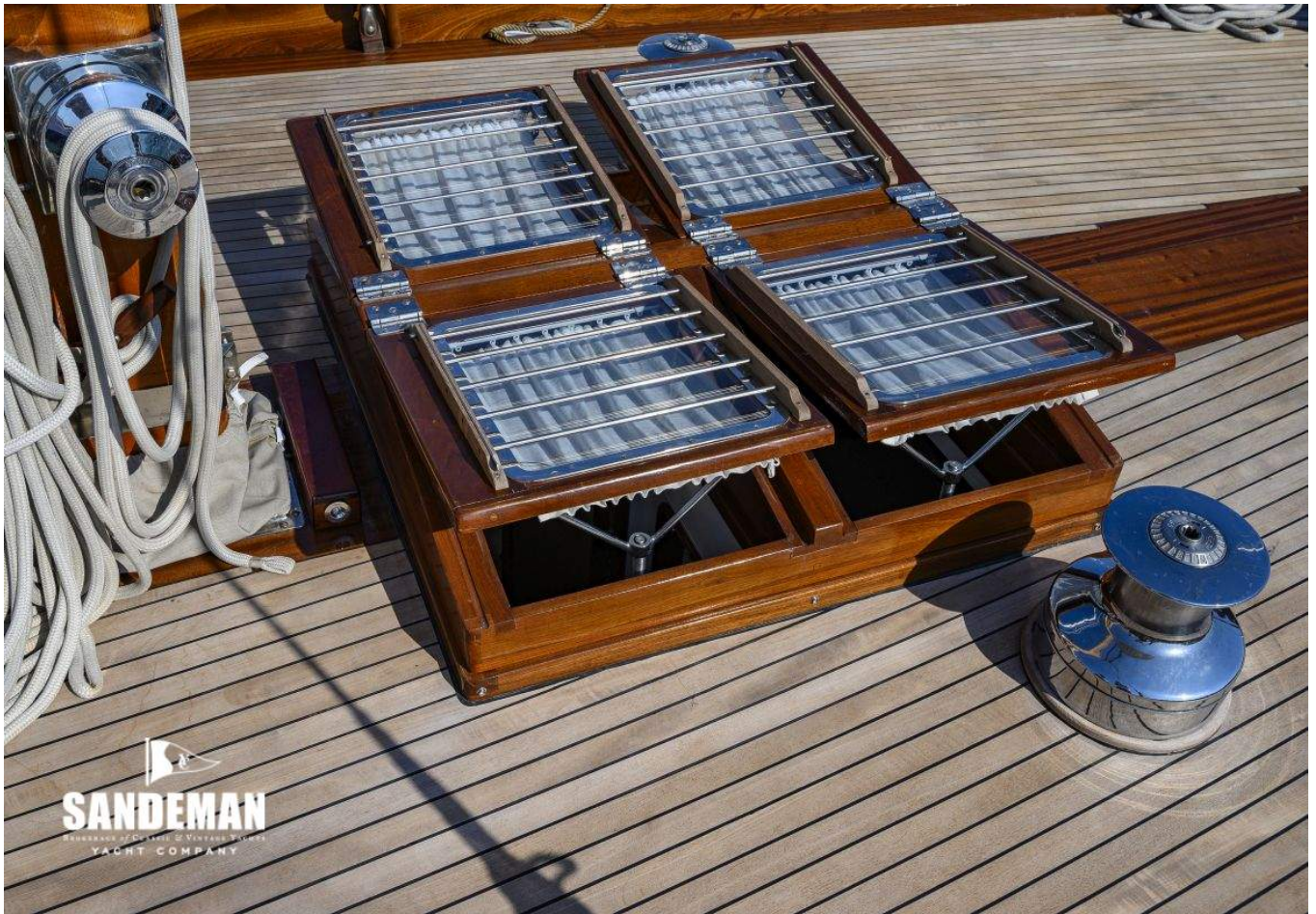






















  
**SANDEMAN**  
BROKERAGE OF CLASSIC & VINTAGE YACHTS  
YACHT COMPANY



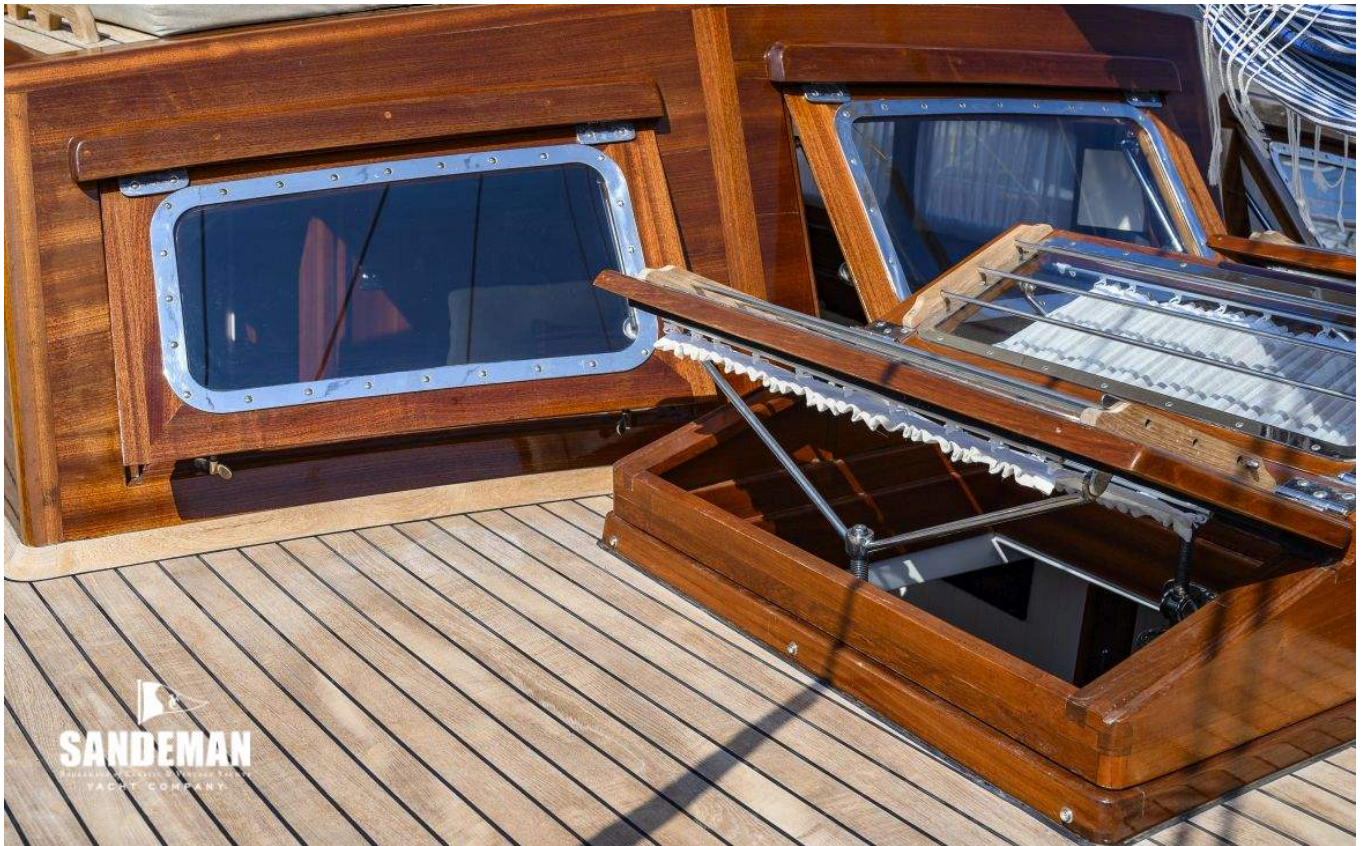
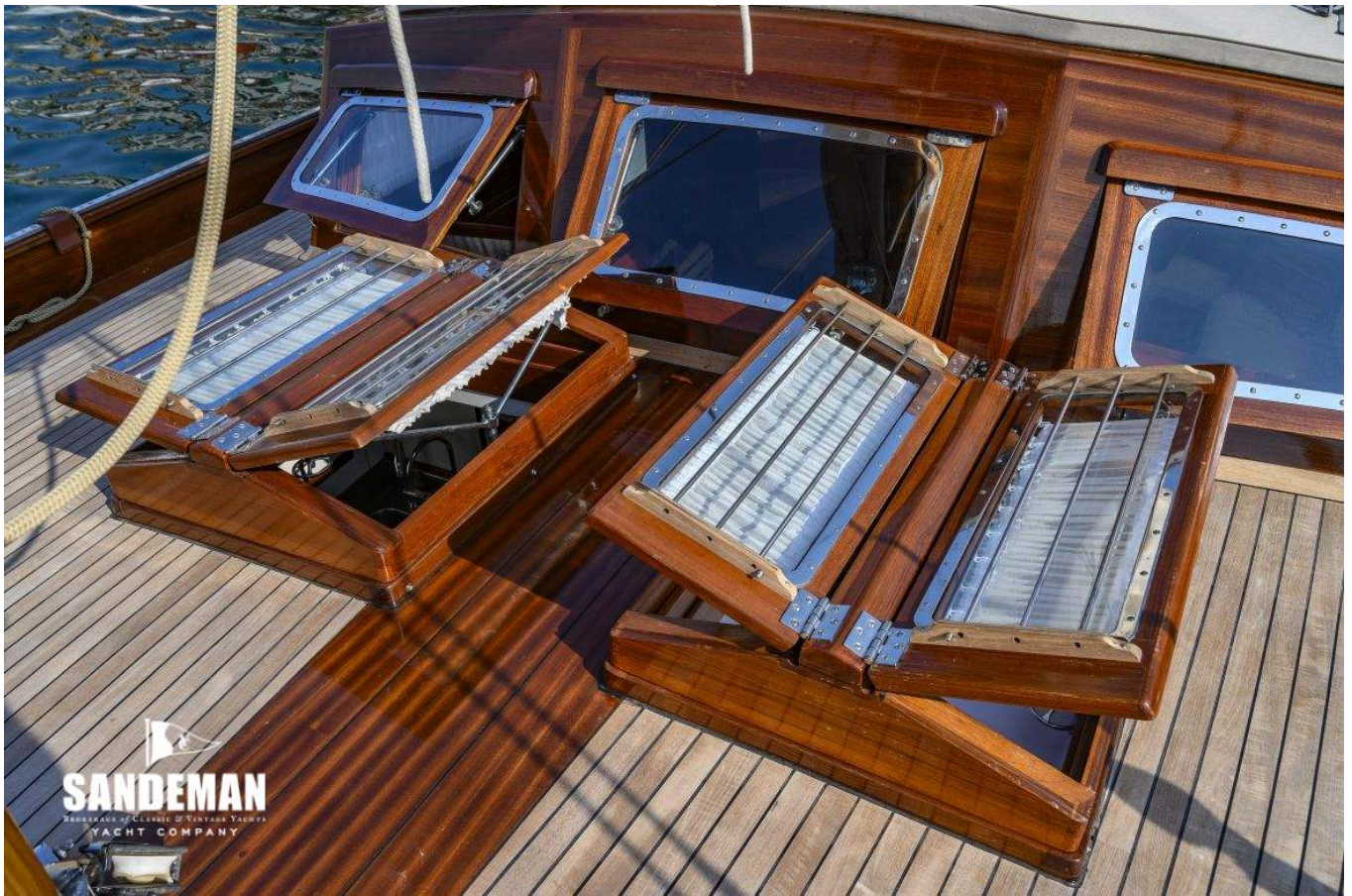




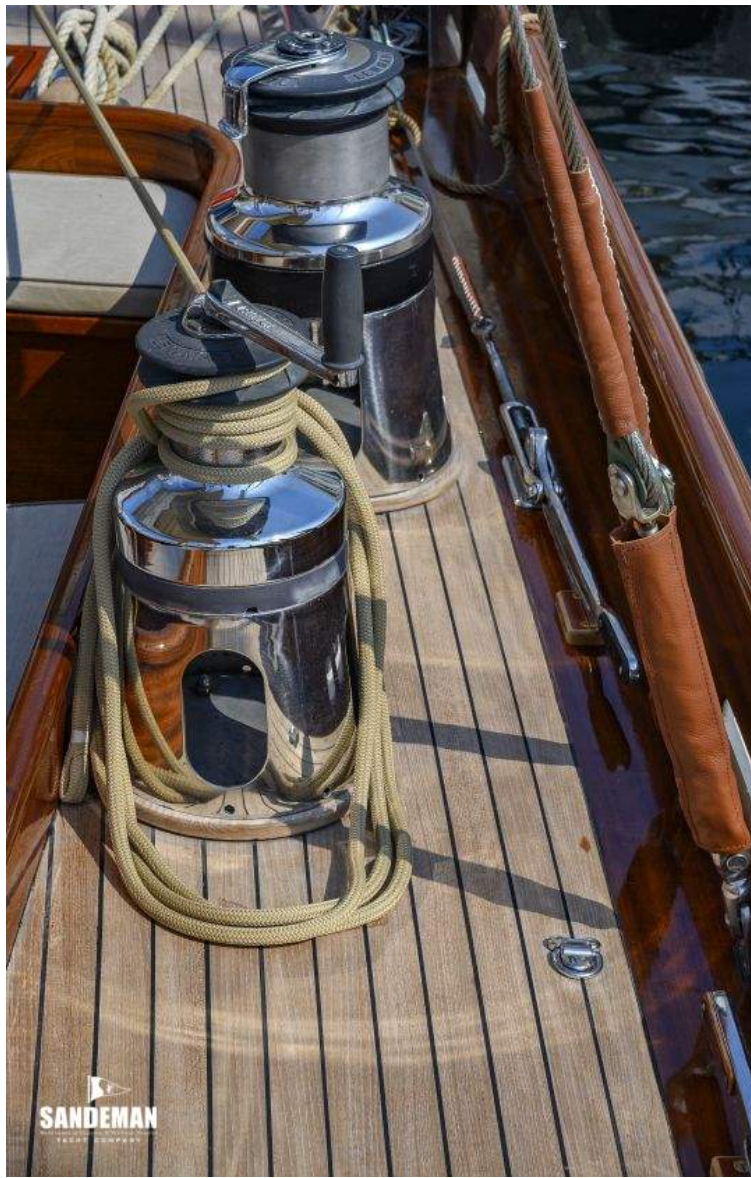




































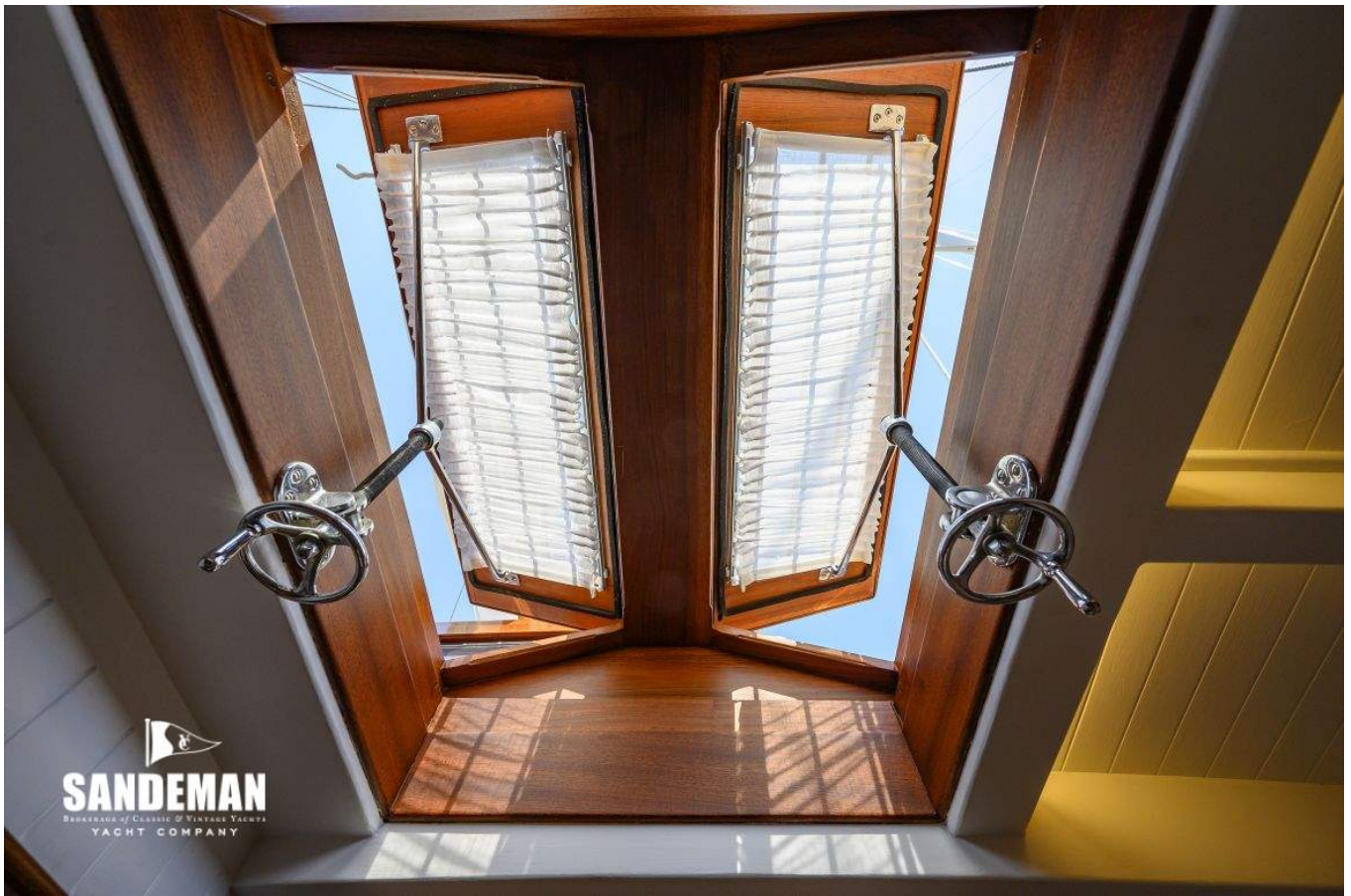












  
**SANDEMAN**  
BROKERAGE OF CLASSIC & VINTAGE YACHTS  
YACHT COMPANY



  
**SANDEMAN**  
BROKERAGE OF CLASSIC & VINTAGE YACHTS  
YACHT COMPANY











  
**SANDEMAN**  
YACHT COMPANY

















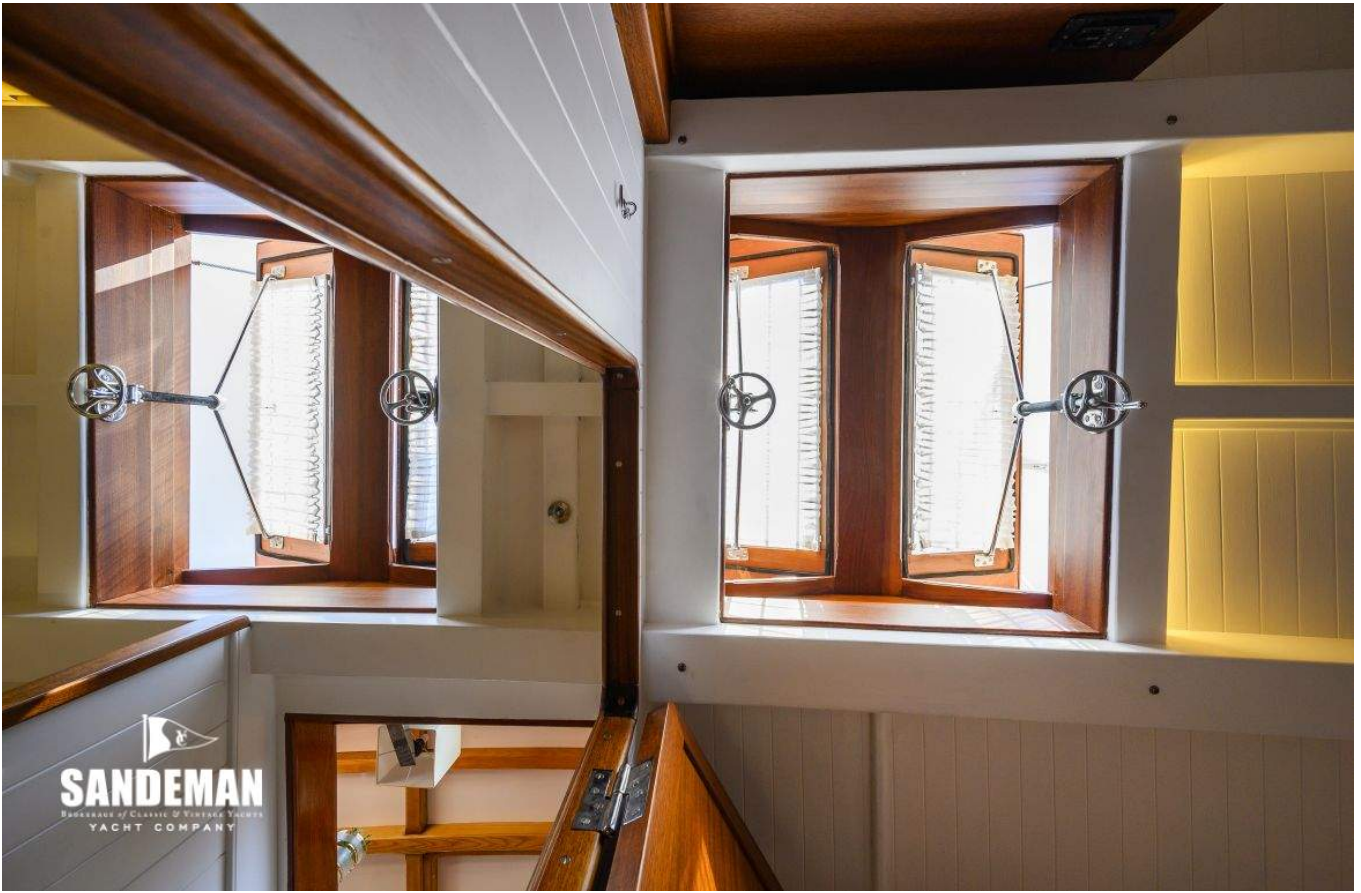




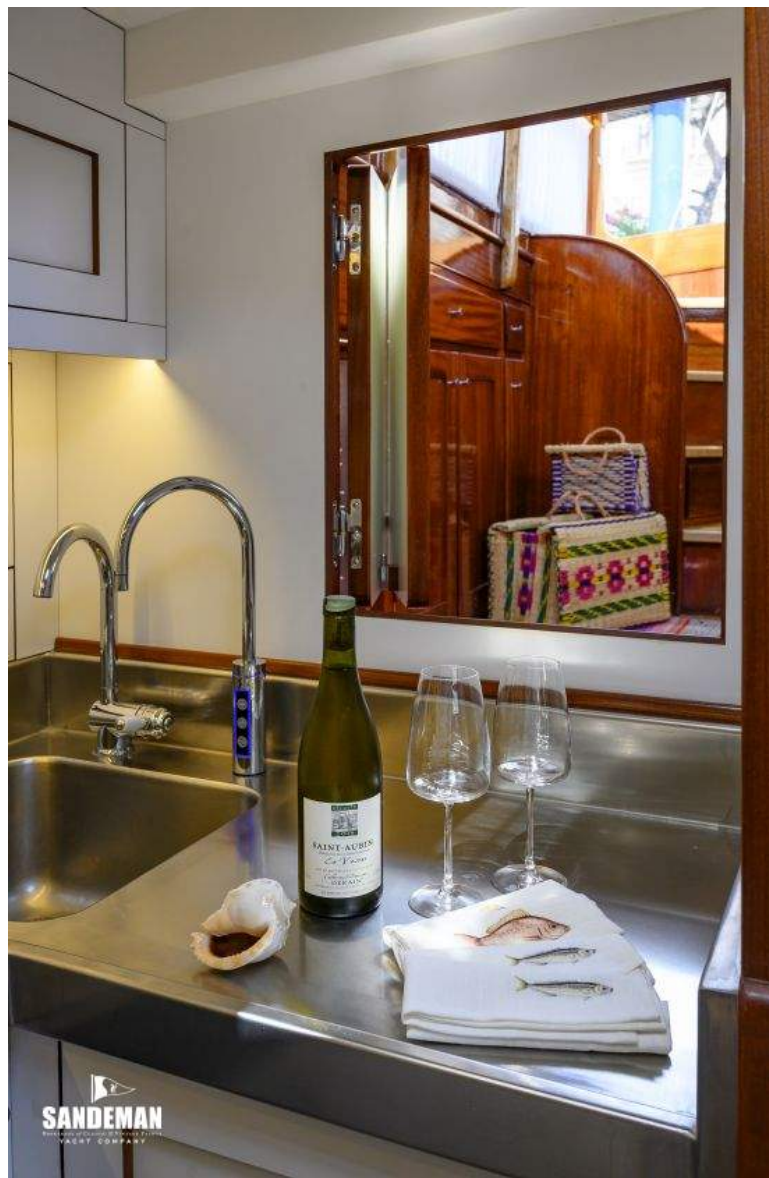
  
**SANDEMAN**  
YACHT COMPANY

























  
**SANDEMAN**  
BROKERAGE OF CLASSIC & VINTAGE YACHTS  
YACHT COMPANY



  
**SANDEMAN**  
BROKERAGE OF CLASSIC & VINTAGE YACHTS  
YACHT COMPANY





  
**SANDEMAN**  
SANDERSON YACHTS  
YACHT COMPANY

























