

## SPARKMAN &amp; STEPHENS / SANGERMANI 71 FT YAWL 1963



## Specification

## ROSALÙ

## SPARKMAN &amp; STEPHENS / SANGERMANI 71 FT YAWL 1963

Designer	Sparkman & Stephens	Length waterline	50 ft 0 in / 15.24 m	Engine	GM Detroit Diesel 6V71 170 hp
Builder	Cantieri Sangermani	Beam	15 ft 5 in / 4.7 m	Location	Italy
Date	1963	Draft	9 ft 5 in / 2.87 m	Price	EUR 650,000
Length overall	71 ft 5 in / 21.76 m	Displacement	45 Tonnes		
Length deck	71 ft 5 in / 21.76 m	Construction	Mahogany on oak		

These details are provisional and may be amended

## Specification

## BROKER'S COMMENTS

In our quest for the rarest and most interesting classic and vintage yachts, every now and then we are offered the chance to market a boat that has quietly existed away from the limelight, in the same ownership, almost unaltered since new. ROSALÙ is one. Her Sparkman & Stephens/ Cantieri Sangermani pedigree, performance, and quality of build and finish are of course assured, but as a one family boat for sixty years she also exudes that aura of a yacht that's still happy being what she was supposed to be. You enter her world, and you just know that she will never disappoint. ROSALÙ has always been enjoyed by summer and, as a cherished member of the family, well cared for by winter, including occasionally necessary more extensive refits, and upgrades to her equipment. The lease of ROSALÙ's home berth at Porto Lotti, La Spezia can be purchased by separate negotiation.



• SANDEMAN YACHT COMPANY •  
• Brokerage Of Classic & Vintage  
Yachts •

[www.sandemanyachtcompany.co.uk](http://www.sandemanyachtcompany.co.uk)

SPARKMAN & STEPHENS / SANGERMANI 71 FT YAWL 1963

---

Specification

REFITS

The current captain has been with ROSALÛ for the past 15 years and has kept detailed documentation of all works done, most notably a recent stripping of the hull in the winter of 2022/2023, where all planks were meticulously checked revealing incredible craftsmanship resulting in only very minor repairs needed – a testament to how well built this boat is and how it's been able to withstand the test of time.

From her home berth at La Spezia (the lease can be purchased by separate arrangement), annual maintenance happens both at dock and shipyard, including varnish work, protective coats to the hull, and general upkeep. The generator was replaced in 2018, while the water-maker and all other equipment are regularly checked.

2022-2023 PORTO LOTTI, LA SPEZIA, ITALY - Hull stripped to bare wood

- Minor planking repairs
- Re-finishing
- All masts and spars un-stepped and checked
- New mainmast spreaders

2018

- New generator

2016-17 CANTIERI NAVALI, LA SPEZIA, ITALY

- Complete repainting and re-varnishing above the water line
- Repainting of masts and booms
- New standing rigging (except for forestay)

2015 CANTIERI DEL CARLO, VIAREGGIO, ITALY

- Complete above waterline refinishing
- New forestay

2010 CANTIERI DEL CARLO, VIAREGGIO, ITALY

- Rudder repairs
- Complete refinishing inc. underbody
- Repainting of masts and boom
- New mast luff tracks

2000 CANTIERI BECONCINI, LA SPEZIA, ITALY

- New teak laid deck on marine plywood
  - Complete internal refit
  - Owner and guest heads to wood panelling from Formica
- 

Specification

HISTORY

SPARKMAN & STEPHENS DESIGN NO. 1642

CANTIERE SANGERMANI BUILD NO. 130 (as PATRICIA II)

ROSALÛ was originally commissioned by Giuseppe Vender, a return and future client for both designer and builder, and launched as PATRICIA II - a beautiful variation on a flow of Sparkman & Stephens 70+ foot yawls from BARUNA through BOLERO - and her very close Sangermani-built cousin, the Italian Naval Academy's STELLA POLARE. However, the story goes that Vender eventually wanted a yacht he could sail single-handed and she was sold to the current owner's grandfather as a replacement for his earlier Sangermani, and renamed in a portmanteau of the given names of the original four family members.

Remarkably, this wonderful yawl with perfect design and build pedigree has subsequently been enjoyed privately by three generations of the same family over 60 years, sailing an average of 3000 miles each summer and since 2004 taking in the occasional classic yacht regatta. ROSALÛ has become such a part of the family that the current owner's friends like to jest that he was born on board.

---

Apart from the change of name, little else has changed in terms of ROSALÛ's fine construction design, build, and finish except for the swapping of the mainmast for an aluminium one after the original wood spar was damaged during a race in the early 1960s, and a new deck by Beconcini in 2000. But of course the family has put in a tremendous effort in the years to maintain her to present and perform the way she does: hauled out every winter, always with a program of maintenance, and the refits listed above.

Specification

## CONSTRUCTION

- Mahogany carvel planking
  - Oak frames
  - Mahogany wood keel
  - Galvanised steel floors
  - Teak laid deck on plywood substrate (2000)
  - Teak superstructures
- 

Specification

## DECK LAYOUT, EQUIPMENT, AND GROUND TACKLE

### GENERAL

- Teak laid deck
- Varnished teak, capped toerail
- Varnished teak superstructures

### FROM AFT

- Bronze mooring fairleads port & starboard at taffrail
- Associated teak and bronze mooring cleats
- Monel pushpit
- Chromed ensign socket
- Chromed bronze downwind sail sheaves port & starboard
- Flush lazarette deck hatch
- Chromed mushroom vent

### COCKPIT

- Varnished teak coaming

### Mizzen mast position

- 4 x Merriman chromed bronze halyard winches
- Wood boom; Merriman fittings
- Helm seat
- Ship's wheel
- Chromed binnacle with steering compass
- Throttle control
- Engine panel
- Very deep cockpit lockers under port & starboard seats
- 2 x Leathered ash shell mainsheet blocks
- Raymarine GPS plotter, ST60 displays and autohelm control
- Extended bridge deck over owner cabin
- Raised teak and smoked acrylic hatch
- Chromed Merriman mainsheet winch on teak plinth
- 2 x Tall chromed ventilators on varnished dorade boxes

### SIDE DECKS AFT

- 6 x Coaming sides chromed sheet winches
- 2 x Barient 35R Primary
- 2 x Barient 35
- 2 x Merriman type
- 8 x Associated teak cleats
- Chromed bronze running backstay winches outboard port & starboard

### DECKHOUSE

- Varnished grabrails port and starboard
- Painted roof
- Windows to sides and forward
- Port and starboard forward windows open
- Bank of 4 x chromed cowl vents on dorade boxes forward
- 2 x Chromed mushroom vents on dorade boxes forward

### SIDE DECKS MID/ FORWARD

- Genoa tracks at toerails port and starboard
- Douglas fir spinnaker and jockey poles stowage to starboard

### MAIN MAST POSITION

- 5 x Merriman chromed bronze halyard winches
- 1 x Harken 56 halyard winch
- 9 x Wood cleats

### FOREDECK

- Lifteraft stowage
- Butterfly skylight
- 2 x Chromed cowl vents on dorade boxes
- Gas bottle locker
- Forehatch scuttle
- 1 x Chromed cowl vent on dorade box
- Windlass (see below)
- Teak and bronze mooring cleats port and starboard
- Inner forestay
- Bronze mooring fairleads port and starboard at rail
- 2 x Panama fairleads
- Reckmann headsail furler
- Monel pulpit

### GROUND TACKLE

- Galvanised/ painted fisherman bower anchor stowed outboard of rail
  - Galvanised anchor chain
  - S&G 24 V Windlass
  - Horizontal chain gypsy and warping drum
  - 2 x Kedge anchors stowed in cockpit locker
- 

Specification

## ACCOMMODATION AND DOMESTIC EQUIPMENT

- Accommodation for 6/7 guests and 2/3 crew
- Mahogany carpentry
- Mahogany sole

### DECKHOUSE/ DECK SALOON

- Chart table to port; leather surface
- Navigation and communications units
- Book case
- Banquette to starboard

- 1 x Deckhead lamps
- 2 x Bulkhead reading lights

### DOORWAY TO GALLEY AND CREW ACCOMMODATION

#### To port

- Alpes-Inox 4 x Burner hob with oven
- Alpes-Inox 2 x Stainless steel sinks & drainer
- Mixer tap
- Seawater tap

- 6 x Steps down from companionway
- L-shaped dinette settee to starboard
- Stowage under and outboard
- Teak saloon table offset to starboard
- Long settee to port
- Beautifully crafted lockers and drawers starboard & port
- Cocktail bar cabinet to port
- Top loading 24 V Frigomar drinks fridge to starboard
- 2 x Large 220 V Frigomar fridges outboard of port settee
- Kienzle world clock
- 3 x Opening ports
- 4 x Deckhead lights
- Companionway stairs to forward and after accommodation
- 3 x Steps down to forward accommodation corridor
- Engine space access under
- Signal flag stowage

#### PORT GUEST CABIN

- 2 x Bunk berths
- Stowage under lower berth
- Clothes lockers
- Hanging locker
- 2 x Deck prisms for natural light
- 1 x Deckhead lamps
- 2 x Bulkhead reading lights

#### WC/ SHOWER COMPARTMENT TO STARBOARD

- Electric toilet
- Shower
- Teak sole grating
- Washbasin with mixer tap
- Large lockers

#### STARBOARD GUEST CABIN

- 2 x Bunk berths
- Stowage under lower berth
- Clothes lockers
- Hanging locker
- 2 x Deck prisms for natural light

- Food, plates and crockery lockers
- Frigomar 24 V fridge
- 1 x Deck prism for natural light
- 1 x Deckhead lamp

To starboard

- Folding table and banquette
- Fold down berth over
- Butterfly skylight in deckhead
- 1 x Deckhead lamp

Forward to port

- WC/ Shower compartment
- Manual toilet
- Shower
- Teak sole grating
- Washbasin with mixer tap
- Lockers
- Deckhead light

Forward to fo'c'sle

- Folding berths port & starboard
- Benches under with stowage under
- Steps to scuttle forehatch in deckhead
- 1 x Deckhead lamp
- 2 x Bulkhead lamps

#### OWNER CABIN AFT OF DECK SALOON

4 x Steps down to short corridor

- Large hanging and wet lockers

Owner cabin aft

- Berths to port and starboard
- Stowage under
- Book cases to port & starboard
- Large 'campaign chest' athwartships aft
- Large locker
- 2 x Deckhead lamps
- 2 x Custom bulkhead reading lights
- Teak and smoked acrylic hatch to bridge deck

#### OWNER CABIN EN-SUITE

- Electric toilet
- Bidet
- Shower
- Teak sole grating
- Washbasin with mixer tap
- Large lockers
- Deckhead lamp

### Specification

## RIG, SAILS, AND CANVASWORK

#### RIG

##### Spars

- Aluminium main mast (c1965)
- 2 x Pairs wood spreaders (2023)
- Original wood boom; merriman fittings
- Original 1 x pairs spreaders wood mizzen mast, white painted
- Wood spinnaker pole
- Wood jockey pole
- Standing rigging
- Forestay 2015
- Others 2017

#### SAILS

- All c.2008 by Halsey Sailmakers except where noted
- 1 x Mainsail, Dacron

- 1 x Gennaker with setting/ retrieving sock
- 1 x Spinnaker

#### CANVASWORK

Lazybags stack packs

- Main boom
- Mizzen boom

Awnings

- 2 x For main cockpit
- 1 x Smaller for foredeck area

Sprayhood

- Over main companionway

Covers for:

- Pasarelle
- Galley skylight



- 1 x Mainsail, laminated Dacron
- 1 x Mizzen, Dacron (Doyle)
- 1 x Mizzen, Dacron
- 1 x Yankee, Dacron (currently on furler)
- 1 x Light genoa, Dacron
- 1 x Staysail, Dacron

- Owner's cabin hatch
- Helm
- 6 x Cockpit winches
- Spinnaker pole
- Jockey pole
- Liferaft
- Safety ring
- 4 x Custom cockpit seat and back cushions
- 7 x Sunbathing cushions for deckhouse roof
- Complete winter cover, in 3 parts

#### Specification

### MECHANICAL, ELECTRICAL, AND TANKAGE

#### MECHANICAL

- GM Detroit Diesel 6V71 170 hp (1963)
- Cruising speed 8kts @1,400 RPM

#### MECHANICAL/ ELECTRICAL

- Volpi Paguro 9000v 8 kW generator (2016)

#### ELECTRICAL

- 2 x Service batteries: Fiamm 6DR-10P 250 A (2020)
- 2 x Engine batteries: Fiamm 6DR-10P 250 A (2020)
- Service battery charger: Evert 50 A 24 V
- Engine battery charger: Mastervolt Mass 24/50
- Inverter: Edecoa 2500/5000W

#### TANKAGE AND ASSOCIATED

##### Fuel

- 2 x Stainless steel diesel tanks: 350 US Gals / 1,325 L

##### Water

- 3 x Stainless steel water tanks: 350 US Gals / 1,325 L

#### Hot Water

- 2 x Hot water boilers: 30 L

#### Fresh Water Pumps

- 2 x 24 V Gianneschi & Ramacciotti

#### Grey water

- 1 x Stainless steel grey waters tank: 40 US Gals / 150 L
- 1 x 24 V Gianneschi & Ramacciotti pump
- 1 x 24 V Jabsco 23690-4103 commercial duty pump

#### OTHER PUMPS

- 1 x 24 V Pentair Shurflo Pro Blaster II, 24V seawater pump
- (For deck wash and galley seawater tap)
- 1 x 24 V Calpeda fridge pump

#### WATERMAKER

- Tecnicomar 220 V, 120 L/h

#### Specification

### NAVIGATION AND COMMUNICATIONS

#### NAVIGATION

- Steering compass at binnacle
- Furuno 1831 radar display at chart table
- Raymarine C90w GPS Plotter at cockpit (2009)
- Raymarine ST 60 (2009)
- Raymarine Acu 400 autopilot (2018)
- Raymarine EV1 autopilot compass (2018)

- Raymarine P706 autopilot display (2018)

- Barometer, clock and inclinometer

#### COMMUNICATIONS

- Icom Ic M323 DSC VHF Radio
- 2 x Icom M52 handheld VHF radios
- Icom IC-M600-MRC SSB radio
- Furuno NX500 Navtex receiver

#### Specification

### SAFETY

#### Lifesaving

- 10-Person Arinmar unlimited distance liferaft (2004)
- Ocean Signal 1 Pro EPIRB (2023)
- 1 x Plastimo IOR Danbuoy (2017)
- 3 x Veleria San Giorgio Hurricane 150N auto-inflatable life jackets (2009)
- 6 x Veleria San Giorgio Samoa 150N lifejackets (2009)

#### Bilge Pumping

- 1 x 24 V Jabsco 23680-4103 Commercial Duty

#### Emergency Fire/ Bilge Pumping

- 1 x 24 V Gianneschi & Ramacciotti
- 1 x 24 V Jabsco 23610-3103 Maxi Puppy 3000
- Fire Extinguishers
- 1 x A.B.S. Easyfire HFC227 12 kg (engine room)
- 2 x ABM Victoria Co2 5 kg
- 4 x Sitemar ABC powder 2 kg
- 2 x Sitemar ABC powder 1 kg
- Other Safety Equipment
- Plexiglass seagoing covers for deckhouse windows

#### Specification

### OTHER EQUIPMENT

- Zodiac Cadet 390 tender (2016)
  - Yamaha F 20B 20 hp 4-stroke outboard motor (2017)
  - Douglas fir and spruce Pasarelle; stanchions and guard rope
  - Varnished wood swim ladder
  - Folding cockpit table (seats 6)
  - Mixed snorkelling and scuba diving gear
- 

Disclaimer

These particulars have been prepared from information provided by the vendors and are intended as a general guide. The purchaser should confirm details of concern to them by survey or engineers inspection. The purchaser should also ensure that the purchase contract properly reflects their concerns and specifies details on which they wish to rely.

---

SPARKMAN & STEPHENS / SANGERMANI 71 FT YAWL 1963

---

Specification  
GALLERY







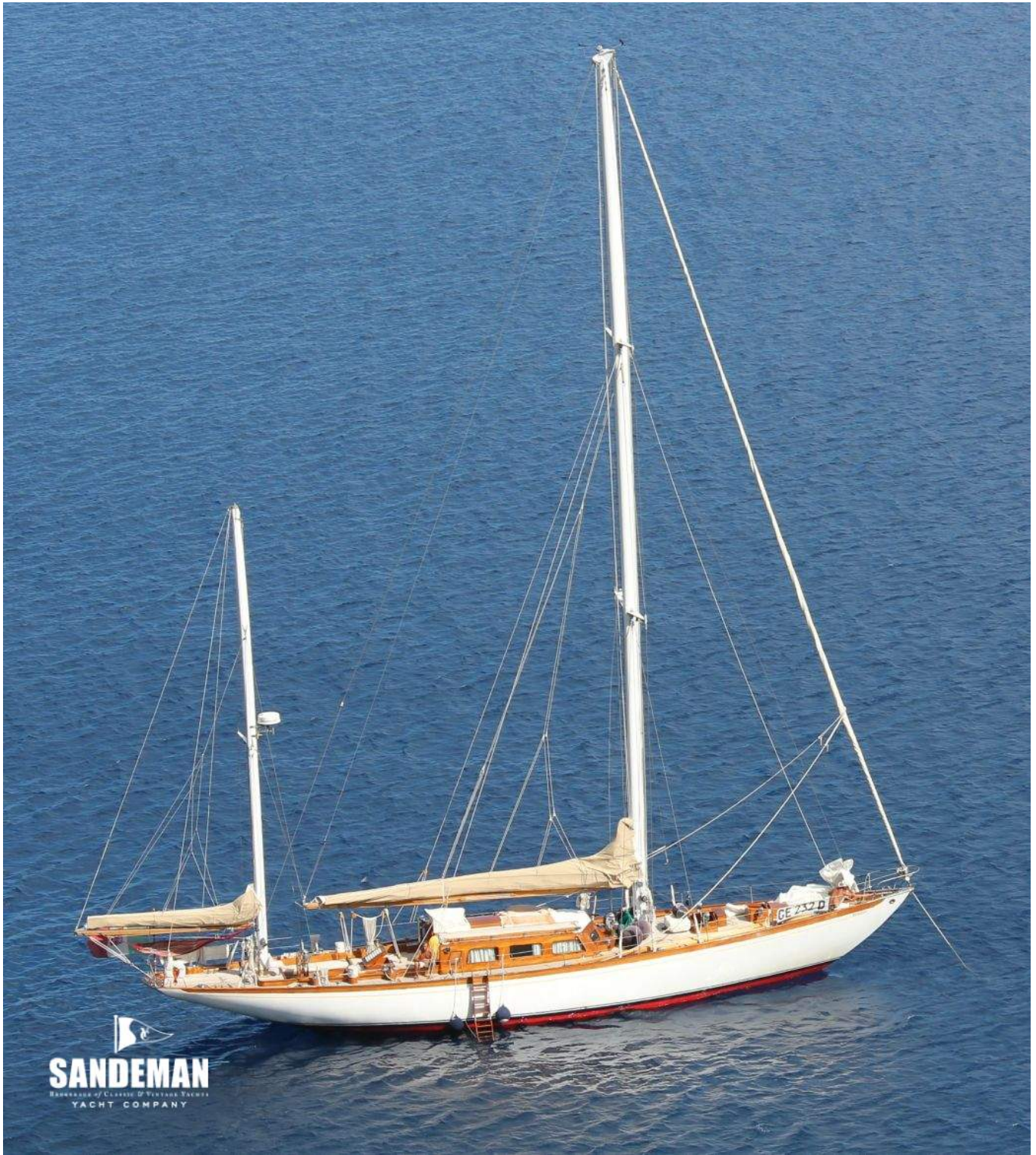


  
**SANDEMAN**  
BOATMAKERS OF FINEST & FASTEST YACHTS  
YACHT COMPANY









  
**SANDEMAN**  
HANDMADE OF CLASSIC & VINTAGE YACHTS  
YACHT COMPANY





SANDEMAN

























  
**SANDEMAN**  
SPECIALISTS IN CLASSIC & VINTAGE YACHTS  
YACHT COMPANY

























**TANDEMANT**  
DESIGNERS OF CLASSIC & VINTAGE YACHTS  
YACHT COMPANY





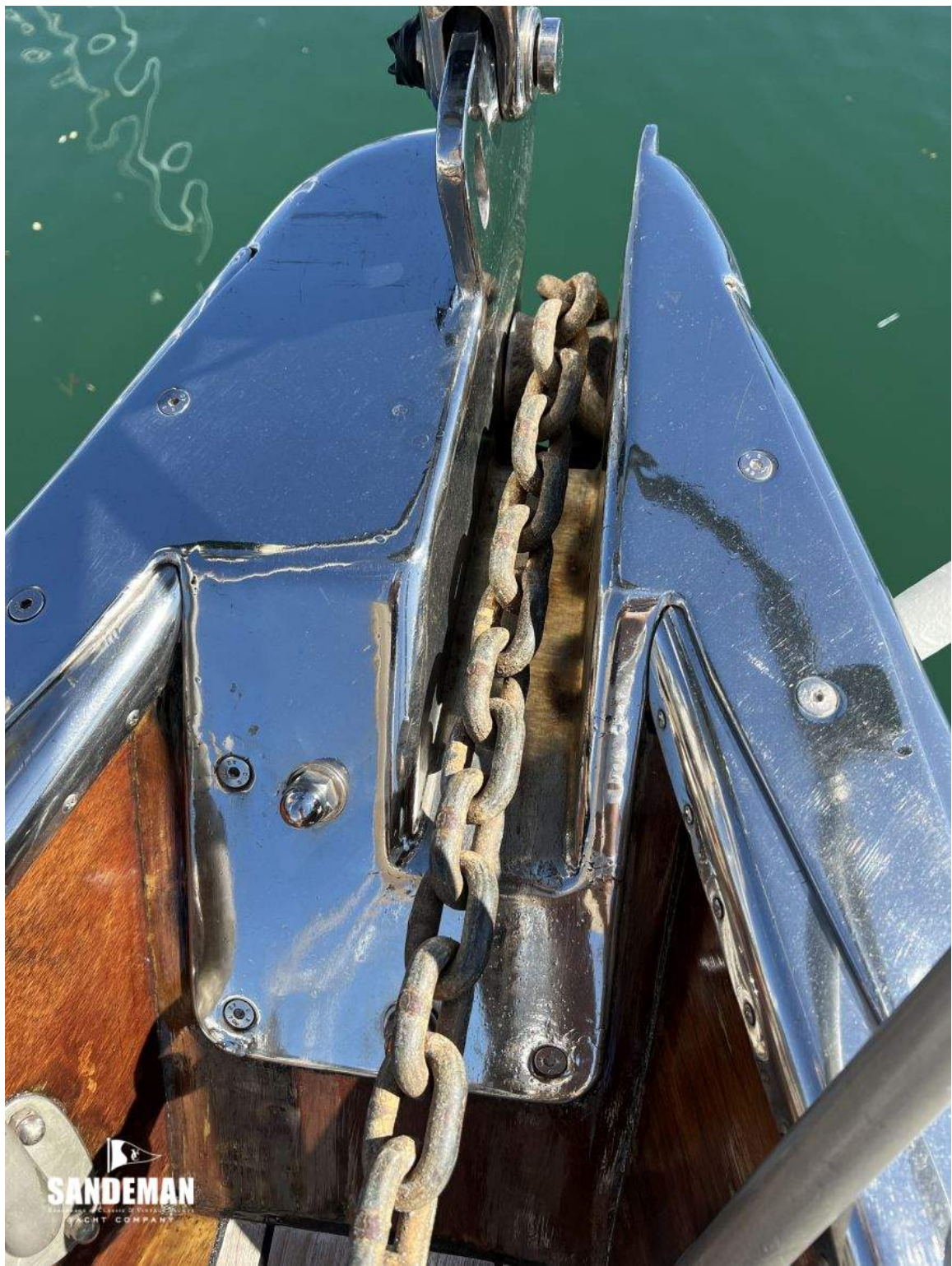






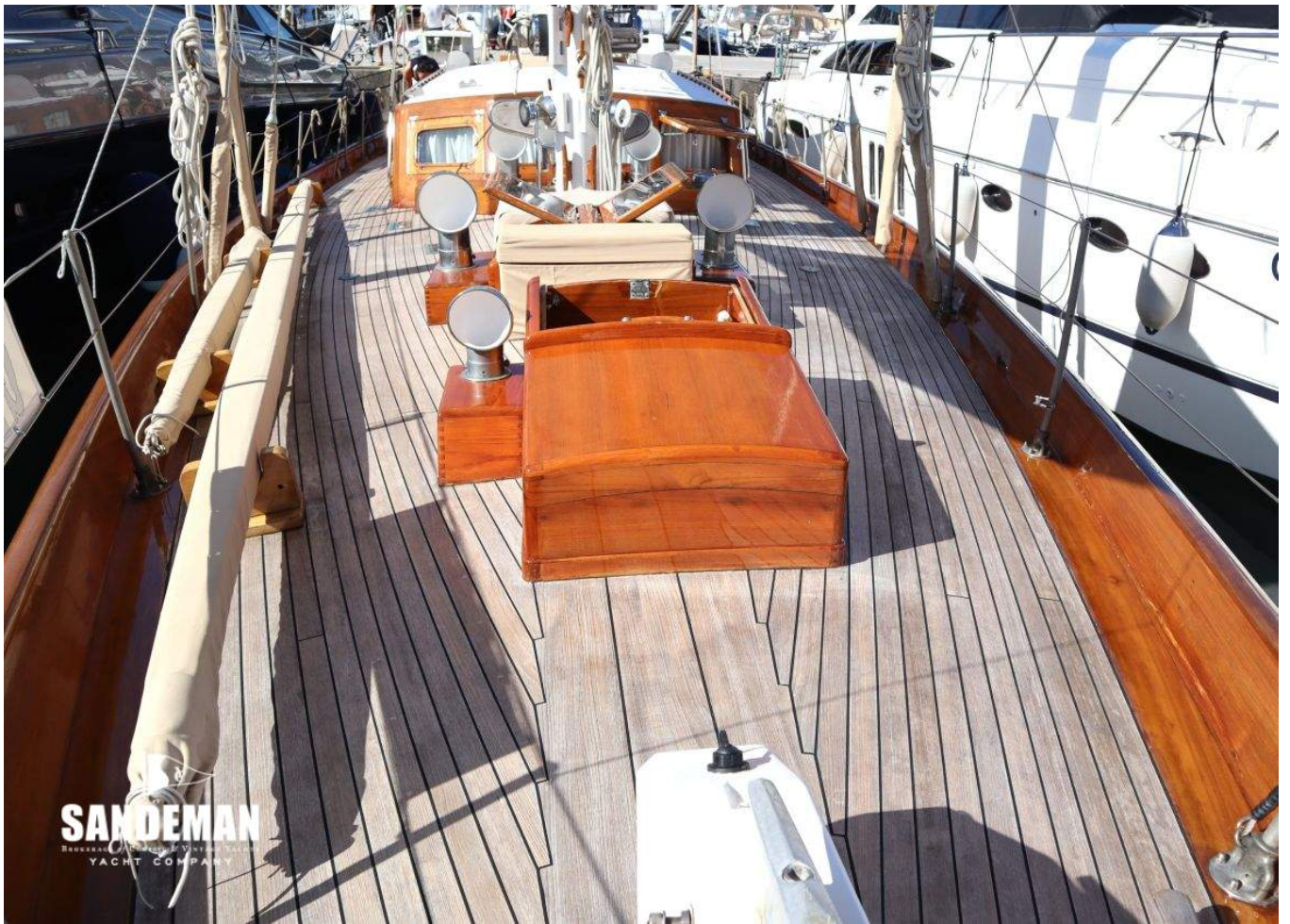






  
**SANDEMAN**  
A LUXURY YACHT COMPANY









  
**SANDEMAN**  
Restoration of Classic & Vintage Yachts  
YACHT COMPANY





K.  
SANDEMAN









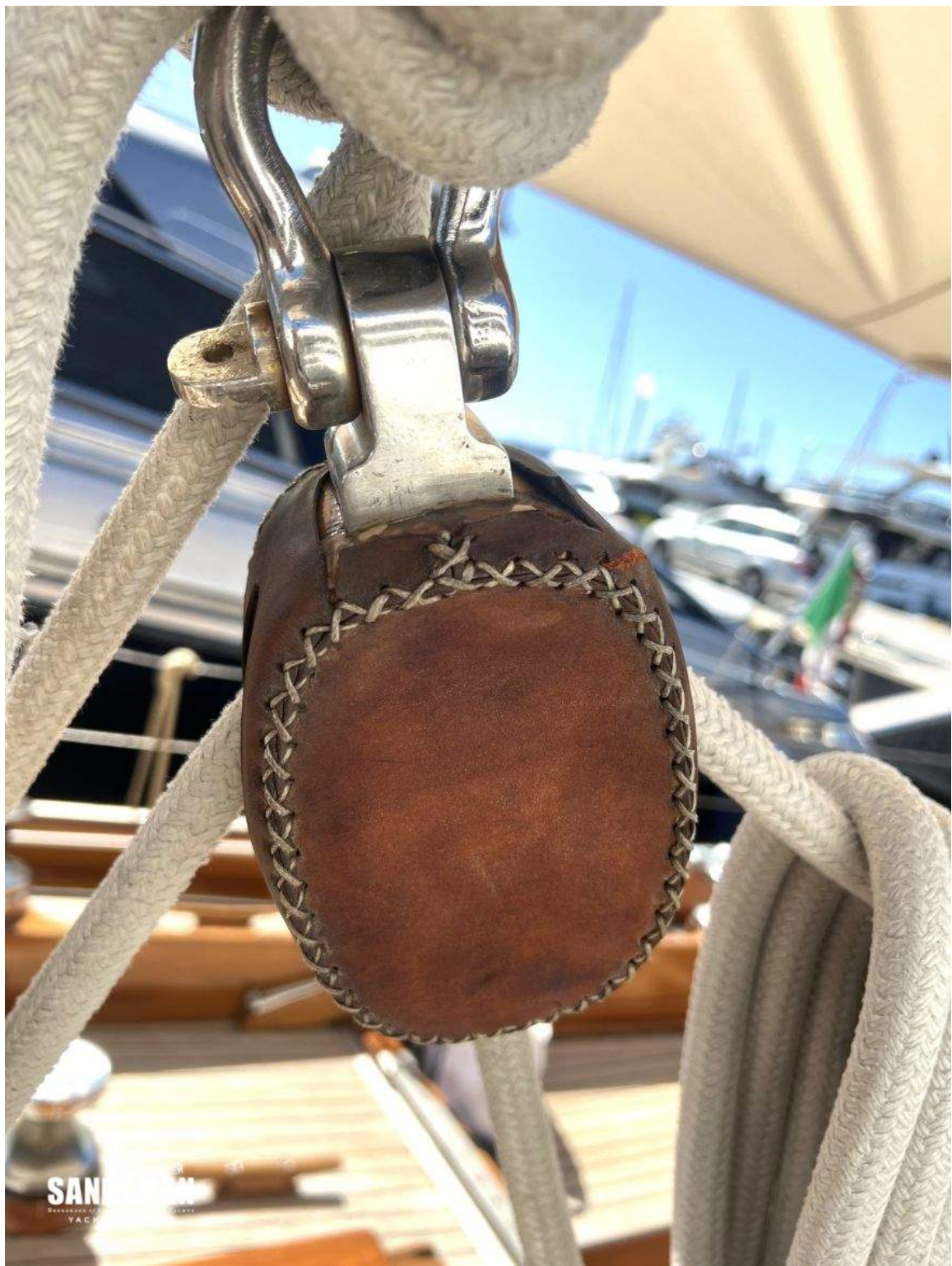


















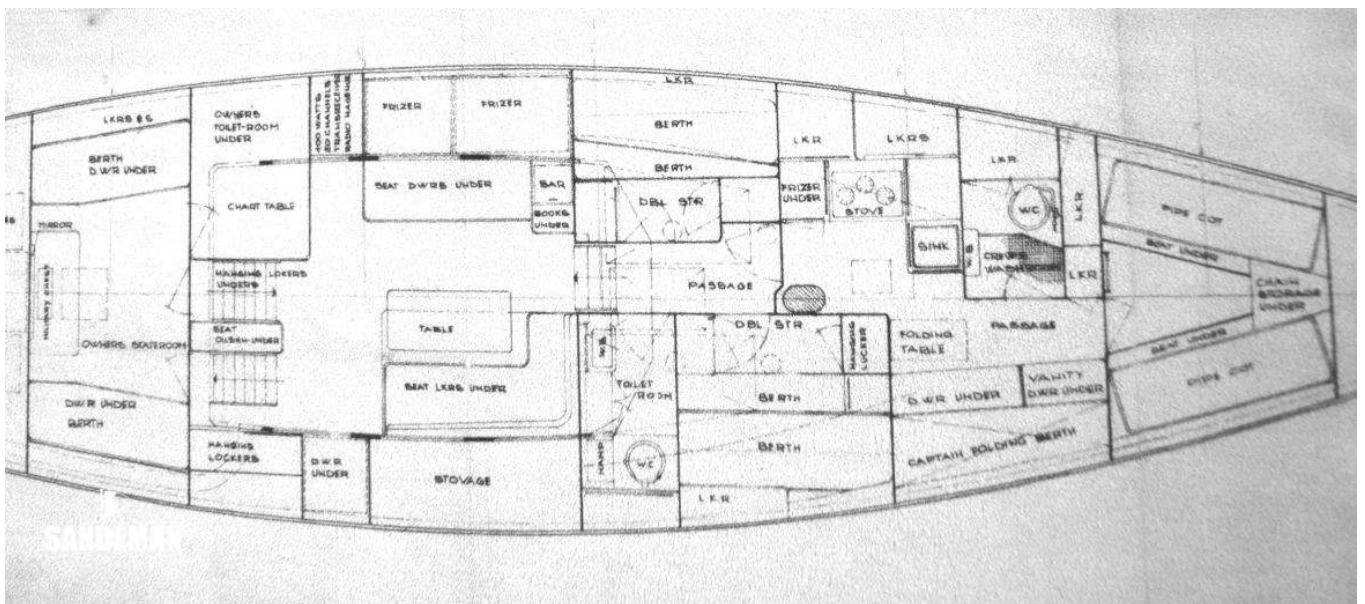
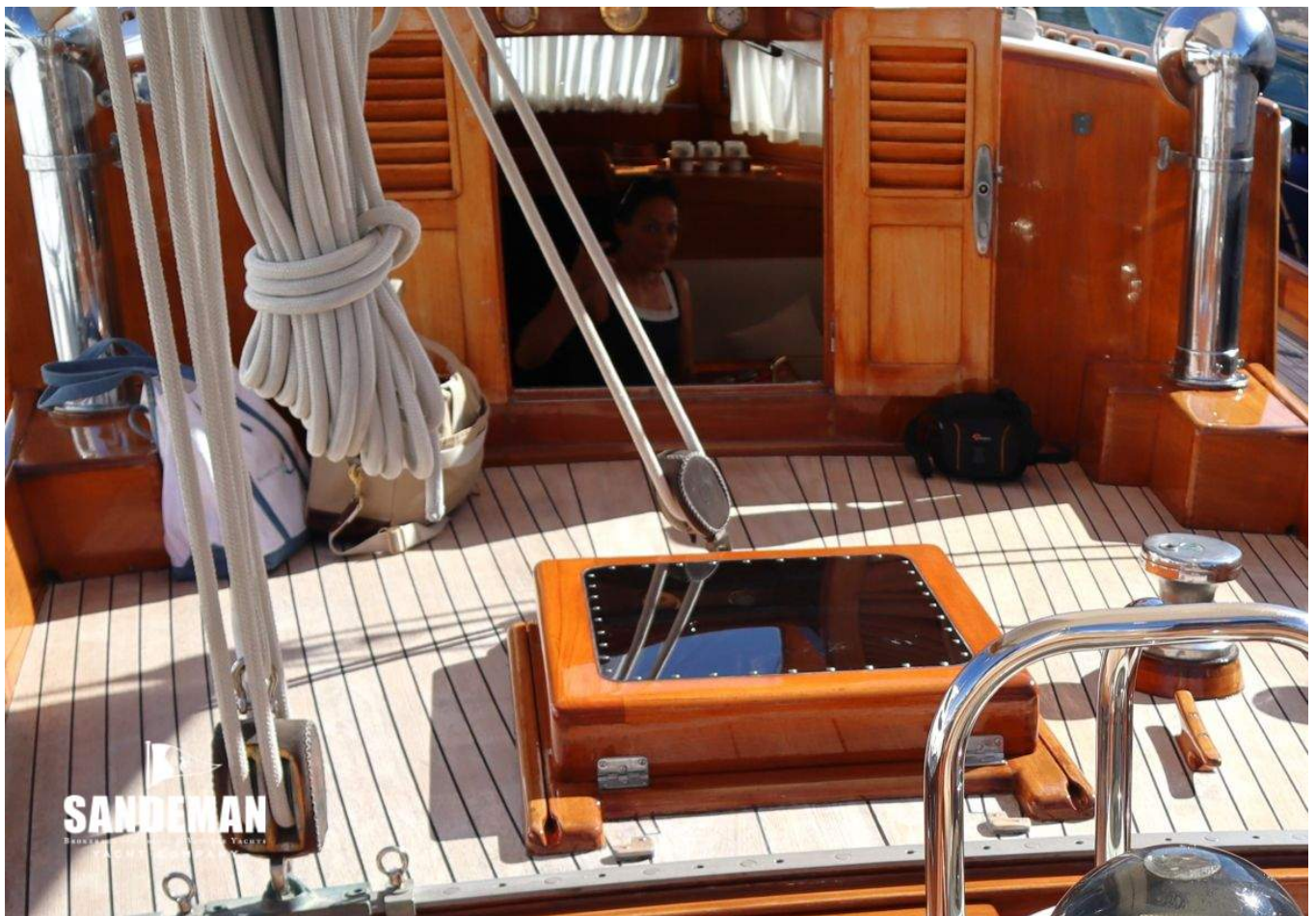






  
**SANDEMAN**  
BROKERAGE OF CLASSIC & VINTAGE YACHTS  
YACHT COMPANY



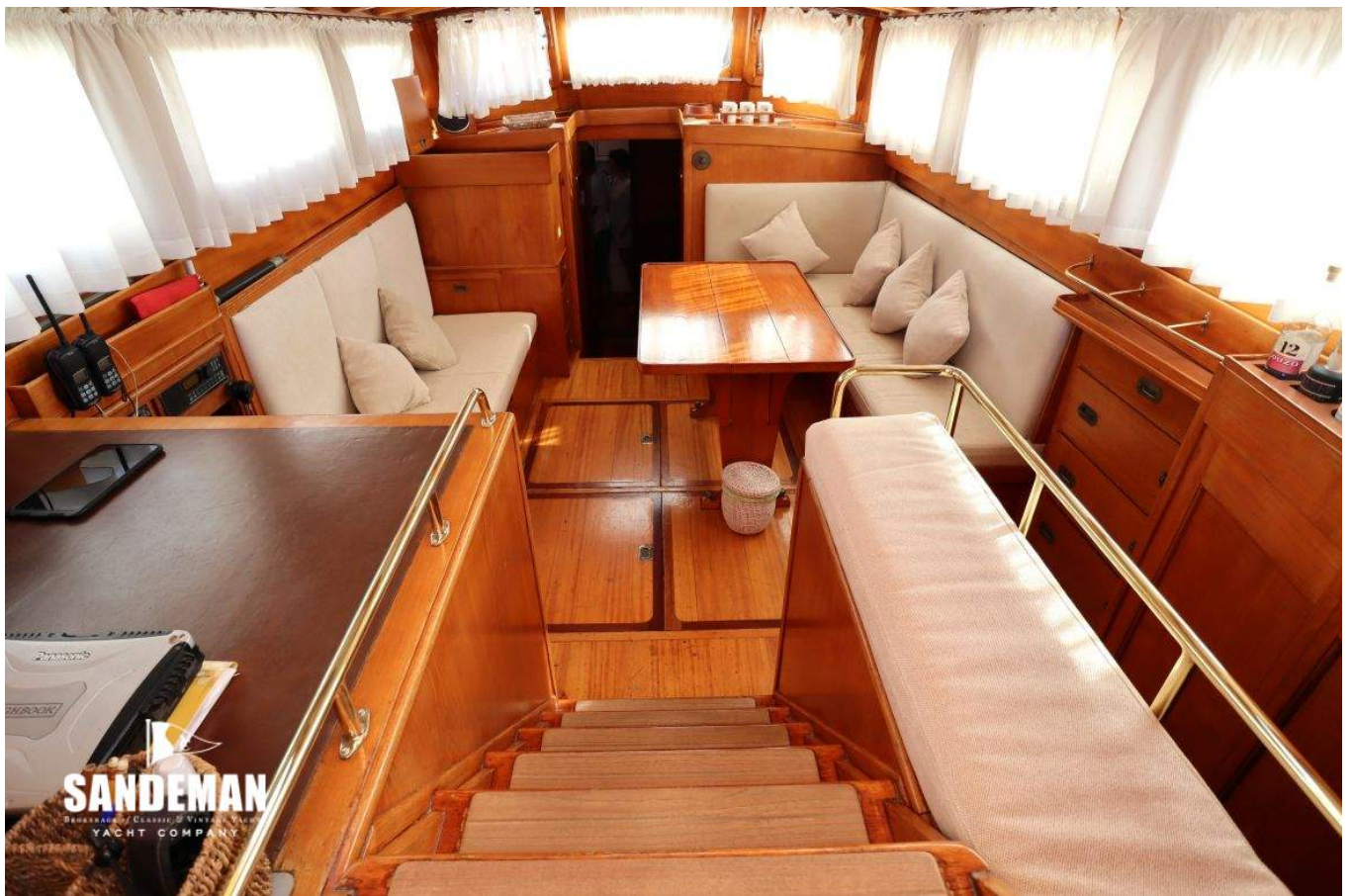






**SANDEMAN**  
YACHTS & BOATS  
YACHT COMPANY









  
**SANDEMAN**  
SANDERSON OF CLACKAMASH & VINTAGE YACHTS  
YACHT COMPANY









  
**SANDEMAN**  
RENOVATORS OF CLASSIC & VINTAGE YACHTS  
YACHT COMPANY





















  
**SANDEMAN**  
SANDS OF COLOR & DESIGN  
YACHT COMPANY





























  
**SANDEMAN**  
SPECIALISTS IN CLASSIC & MODERN YACHTS  
YACHT COMPANY

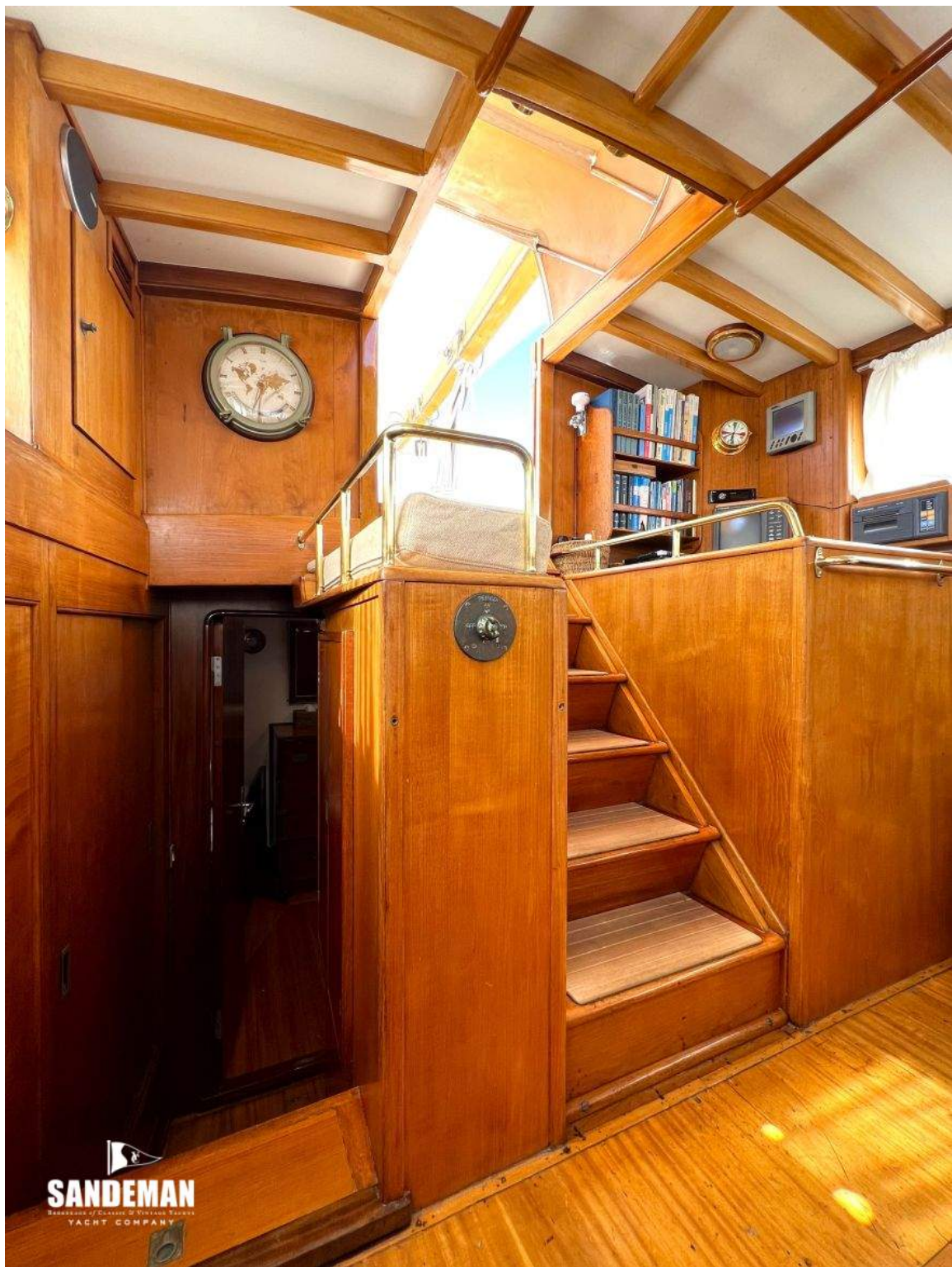
























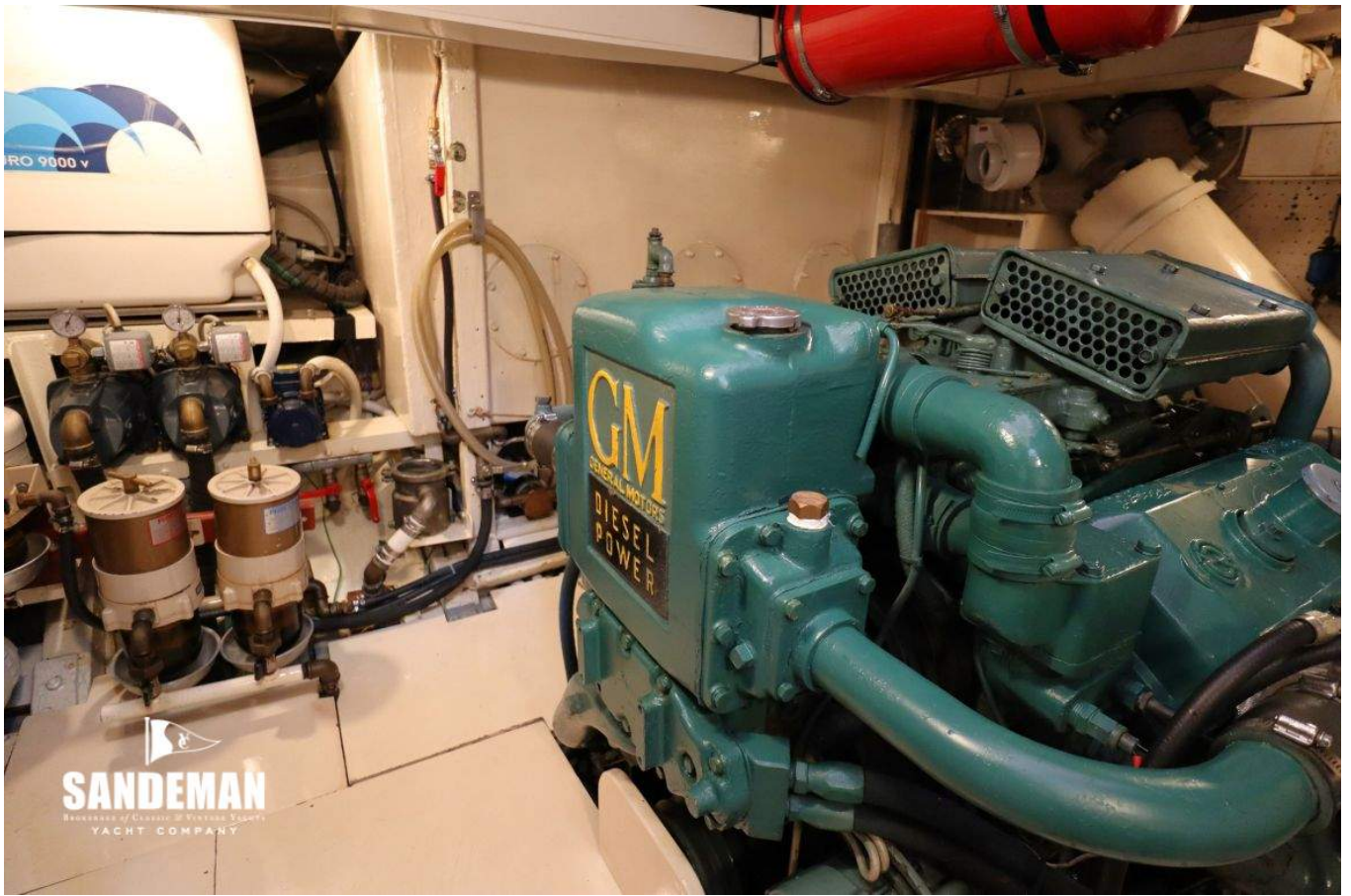












  
**SANDEMAN**  
BRANCHES OF COASTAL & FISHING YACHTS  
YACHT COMPANY





  
**SANDEMAN**  
BRANDERS OF CLASSIC & VINTAGE YACHTS  
YACHT COMPANY



