

SPIRIT YACHTS 46 2004/2015 ONDINE OF IPSWICH



Specification

ONDINE OF IPSWICH
SPIRIT YACHTS 46 2004/2015 ONDINE OF IPSWICH

Designer	Sean McMillan/ Spirit Yachts	Length waterline	30 ft 10 in / 9.4 m	Engine	Yanmar 2GM20 18 hp Diesel
Builder	Spirit Yachts Ltd., Ipswich	Beam	9 ft 2 in / 2.8 m	Location	United Kingdom
Date	2004	Draft	6 ft 11 in / 2.1 m	Price	GBP 310,000
Length overall	46 ft 5 in / 14.15 m	Displacement	4.5 Tonnes		
Length deck	46 ft 5 in / 14.15 m	Construction	Cedar/ Khaya wood epoxy		

These details are provisional and may be amended

Specification

BROKER'S COMMENTS

The Spirit 46 truly set Spirit Yachts on the right track, and no wonder; this design has many of the answers if you are searching for modern racing and cruising performance with the emotional satisfaction of an incredibly beautiful hull form, startling ease of handling, and an interior as elegant as her external lines would suggest. ONDINE OF IPSWICH returned to her original builder for a meticulous 2015 refit to optimise racing efficiency and cruising comfort. In two subsequent family ownerships her cruising range has spanned the length and width of the English Channel and she has been a regular racer at British Classic Yacht Club regattas; considered one of the quickest Spirit 46s on the race track. At the 2024 Guernsey Spirit Yachts Regatta she was first Spirit 46 and third in Class 2. ONDINE OF IPSWICH is a very well proven example of a design that has captured hearts and won minds – even 007 couldn't resist!



• SANDEMAN YACHT COMPANY •
• Brokerage Of Classic & Vintage
Yachts •

www.sandemanyachtcompany.co.uk

SPIRIT YACHTS 46 2004/2015 ONDINE OF IPSWICH

Specification

REFITS 2015-2019

- | | |
|--|--|
| <p>2024</p> <ul style="list-style-type: none">- Sails serviced and laundered by One Sails <p>2019</p> <ul style="list-style-type: none">- New forestay replacing furling- All foresails converted to soft hanks- New high performance rudder fitted <p>2016 - AT MYLOR MARINE</p> <ul style="list-style-type: none">- Keel was later removed for inspection; refastened- New port and starboard transducers for depth and boat speed <p>2015 - EXTENSIVE REFIT AT SPIRIT YACHTS</p> <ul style="list-style-type: none">- Teak deck removed and replaced- Including covering boards and toerails- Spars fully stripped down and resprayed | <ul style="list-style-type: none">- Standing rigging replaced- Most running rigging replaced- New sail wardrobe and boat set up for spinnaker handling- Complete refinishing of topsides (Awlgrip) and external varnish- New upholstery/foam throughout- Installation of a heating system- Removable stanchions and teak handrails fitted- New life-raft- New below water skin fittings throughout- New electric bilge pumps installed- New Jabsco toilet and plumbing |
|--|--|
-

Specification

HISTORY

<p>ONDINE OF IPSWICH was first commissioned for cruising and occasional regattas in Greece as LITTLE FEAT, then remained there as JIL with her second owner. On return to the UK and renamed HELEN OF DURGAN, she enjoyed a major 2015 refit in the hands of her original builders including upgrading of her racing equipment and cruising comforts. As HELEN OF DURGAN she was a regular Spirit of Tradition participant at</p>	<p>the British Classic Yacht Club/ Panerai classic regattas at Cowes, and at Falmouth Week and Hamble Classics, while also cruising extensively on the south coast of England. In present ownership as ONDINE OF IPSWICH, she has continued to be enjoyed as the the all-rounder the Spirit 46 is famed as, including taking in the 2024 Guernsey Spirit Yachts Regatta where she was first Spirit 46 and third in Class 2.</p>
---	---

Specification

CONSTRUCTION

- | | |
|--|--|
| <p>Spirit Yachts Yard No: 46-02</p> <ul style="list-style-type: none">- Wood epoxy monocoque hull- Brazilian cedar, 15 mm x 40 mm, epoxy bonded and bronze fastened- Planking cross laminated with 2 x 3 khaya veneers at 45 degrees- 400 gsm bi-radial glass/epoxy, faired with epoxy and an Awlgrip paint system- Solid/ laminated straight grain Douglas fir hog, keel, stem and stern posts, horn timber | <ul style="list-style-type: none">- Solid/ laminated straight grain Douglas fir floors and beam shelf- Lloyds-spec Bruynzeel marine plywood internal furniture/ stiffening bonded to the hull- Laminated ring frames form the chain plate mounts and mast partners- Ring frames transit the loads to hull and keel bearing floors |
|--|--|
-

Specification

DECK LAYOUT, EQUIPMENT, AND GROUND TACKLE

- | | |
|---|---|
| <p>FROM AFT</p> <ul style="list-style-type: none">- Raw teak laid deck on marine plywood substrate- Varnished teak king planks and covering boards- Removable stainless steel stanchions- Deck fittings a mix of stainless steel and chromed bronze <p>AFT DECK</p> <ul style="list-style-type: none">- Mooring fairleads port and starboard- Mooring cleat on centreline- Ensign staff socket | <ul style="list-style-type: none">- Winches serviced June 2023- Ronstan foresail sheet cars with Barber haulers <p>TRUNK CABIN</p> <ul style="list-style-type: none">- Cold moulded cedar- 3 x Elliptical chromed bronze opening portlights port and starboard- Raw teak grabrails port and starboard- Sliding companionway hatch- Double leaf companionway doors- Flush frosted plexiglass hatch over saloon |
|---|---|

- 2 x Flush hatches
- Starboard hatch to lazarette
- Port hatch to boarding ladder and swim shower
- Wood tiller with Harken extension and Autopilot arm fitting
- Double sheave spinnaker blocks port and starboard

COCKPIT

- Large sunk cockpit
- Attractive elliptical coaming
- Teak laid cockpit seats port and starboard and aft
- Very deep lockers under offer excellent stowage
- Shore power socket
- Lewmar engine control
- Harken mainsheet traveller with 5:1 controls (2016)
- Harken mainsheet blocks (2016):
- 6:1 increasing to 24:1 (inclusive of fine tune)
- At Fwd bulkheads
- Port and starboard steering compasses
- Wind displays port and starboard
- Raymarine autopilot control
- B&G Plotter

SIDE DECKS

- Andersen self-tailing stainless steel sheet winches
- 40ST Port and starboard
- 46ST Port and starboard

- Flush frosted plexiglass hatch over heads
- Andersen 40ST stainless steel halyards/ controls winches port and starboard
- 6 x Spinlock rope clutches/ halyard locks port and starboard
- Ronstan lead sheaves port and starboard
- Ronstan turning blocks at mast base

FOREDECK

- Teak stowage chocks to port for spinnaker pole
- 2 x Lenticular deck lights over forecabin
- Stainless steel mooring cleat on centreline
- Chromed mooring fairleads port and starboard
- Recessed forestay chainplate
- Flush hatch for anchor chain locker
- Bow roller plate with padeye for Ronstan foreguy block
- 2 x Anchors with chain and warp

GROUND TACKLE

- Danforth type anchor at foredeck locker
- Chain and warp rode
- Larger 20 kg Bruce type anchor stowed in cockpit locker

Specification

ACCOMMODATION AND DOMESTIC EQUIPMENT

Accommodation for 5 in fore cabin berth, saloon and a quarter berth

- All well lit and ventilated
- Access via 3 x steps down from companionway hatch
- Engine box forms part of steps

GALLEY TO PORT

- Top loading fridge
- Top loading dry store
- Raw teak top surfaces
- Origo 4100 stove
- 2 x Stainless steel sinks
- Lockers outboard and below
- Swivel mixer tap
- 'Cabin' lamp/ reading lamp

NAV STATION TO STARBOARD

- Chart table
- Lift lid stowage under
- Shelf and locker outboard
- 'Cabin' lamp/ reading lamp
- Navigation and comms displays
- Ship's Wempe clock, barometer, hygrometer, and tide clock
- Sony audio system

QUARTER BERTH TO STARBOARD

- Lockers outboard

FORWARD TO SALOON

- Settees/ berths port and starboard
- Alcantara type upholstery (2015)
- Lee cloths
- Buttoned back rests
- Stowage under and outboard
- Shelves and lockers outboard
- Removable folding saloon table
- Bottle stowage under
- Bulkhead light to port

DOOR OFFSET TO STARBOARD FORWARD TO WC COMPARTMENT

- Stainless steel sink unit to starboard
- Mixer tap
- Stowage under and outboard
- Jabsco manual toilet to port (2015)
- Deckhead light

FORWARD TO FORECABIN

- V-berths with insert to convert to double
- Alcantara type upholstery (2015)
- Stowage under
- Shelves at hull side
- 2 x reading lamps
- Access fwd to chain locker

Specification

RIG, SAILS, AND CANVASWORK

SPARS & STANDING RIGGING

- Nordic Mast white painted carbon fibre mast

- Lazyjacks at boom to collect sail and to act as topping lift
- Spare topping lift

- Harken boom vang, cockpit controlled
- Ronstan spinnaker pole track and tackle
- Twin swept back spreaders; jumper struts
- Rod discontinuous standing rigging (2015)
- 8 mm Cap & intermediate shrouds, 6 mm lowers, 6 mm at jumper struts
- 8 mm Forestay
- Closed and open barrel stainless rigging screws
- 6 mm Dyneema plus fibrewire backstay
- Nordic white painted carbon fibre 'Park Avenue' boom
- Southern Spars carbon fibre spinnaker pole (2015)

RUNNING RIGGING

- Internal halyards; mostly 10 mm pre-stretched multi-plait or Dyneema
- Tylaska shackles throughout
- All halyards lead aft to the cockpit through deck organisers
- Reefing line and clew outhaul lines led aft to cockpit controls
- Backstay controlled by 12:1 purchase at helm position

SAILS

- Extensive and recent sail wardrobe by One Sails consisting of:
- 2 x Mainsails -
 - Racing: 4T FORTE composite (2017)
 - Cruising: M3 membrane (2015)
 - Harken mainsail luff slides
 - 4 x Headsails -
 - 4T FORTE Composite No 1 (2020)
 - 4T FORTE No 2 (2017)
 - 4T FORTE No 3 (2019)
 - M3 Membrane (cruising - 2015)
 - 5 x Downwind sails -
 - Spinnaker 84 sq m (2015)
 - Spinnaker 91.75 sq m (2017)
 - Spinnaker 99.59 sq m (2020)
 - Code zero (2017)
 - Asymmetric (2015)
 - 1 x Trisail (2015)

CANVASWORK

- Summer and winter covers (2015)
- They protect entire deck/gunwale/coachroof from the elements
- Mainsail boom cover
- Sail bags for all sails
- Fabric collapsible dock box for use during regattas

Specification

MECHANICAL, ELECTRICAL, AND TANKAGE

MECHANICAL

- Yanmar 2GM20 18 hp fresh water cooled diesel engine
- Engine serviced annually; most recent Feb. 2024
- Hurth 2.6:1 gearbox
- Soft mounted with flexible coupling and flexible stuffing box
- 25 mm Stainless steel propeller shaft through bronze “P” bracket
- Gori bronze folding propeler, anode protected
- Wet exhaust system

ELECTRICAL

- 3 x Sealed Vetus 70 Ah batteries (2020)
- Isolator/ changeover switch adjacent to quarter berth

- Electrical panel in chart table area with all switches individually fused
- Integral 240 V AC/ 12 V DC battery charger with charging socket (2015)
- 2 x 240 V AC sockets under chart table

TANKAGE

- 80 L Vetus nylon translucent fuel tank
- 80 L Vetus nylon water tank under cockpit
- Vetus calorifier (2016)

HEATING

- Webasto ducted throughout (2015)

Specification

NAVIGATION AND COMMUNICATIONS

NAVIGATION

- 2 x Steering compasses with night illumination
- B&G Zeus 3000 chart plotter (2018)
- External repeater
- Raymarine wind instruments

- Raymarine above deck autopilot
- Windex with night light at masthead

COMMUNICATIONS

- Raymarine VHF radio

Specification

SAFETY

- Manual bilge pump
- 2 x Electric bilge pumps
- 4-Person Charter ISO valise life raft (2015, next service April 2025)
- Deck safety lines
- RORC flare pack
- Heaving line
- 2 x Dry powder fire extinguishers (2020)

- 2 x Horseshoe life rings
- LED navigation lights at deck level
- Steaming light
- All round white anchor light at mast head
- Deck flood light

Specification

OTHER EQUIPMENT

- Fold out bathing ladder
- Fenders, warps and sail ties

- Cockpit cushions (new foam 2018)

Disclaimer

These particulars have been prepared from information provided by the vendors and are intended as a general guide. The purchaser should confirm details of concern to them by survey or engineers inspection. The purchaser should also ensure that the purchase contract properly reflects their concerns and specifies details on which they wish to rely.

SPIRIT YACHTS 46 2004/2015 ONDINE OF IPSWICH

Specification
GALLERY









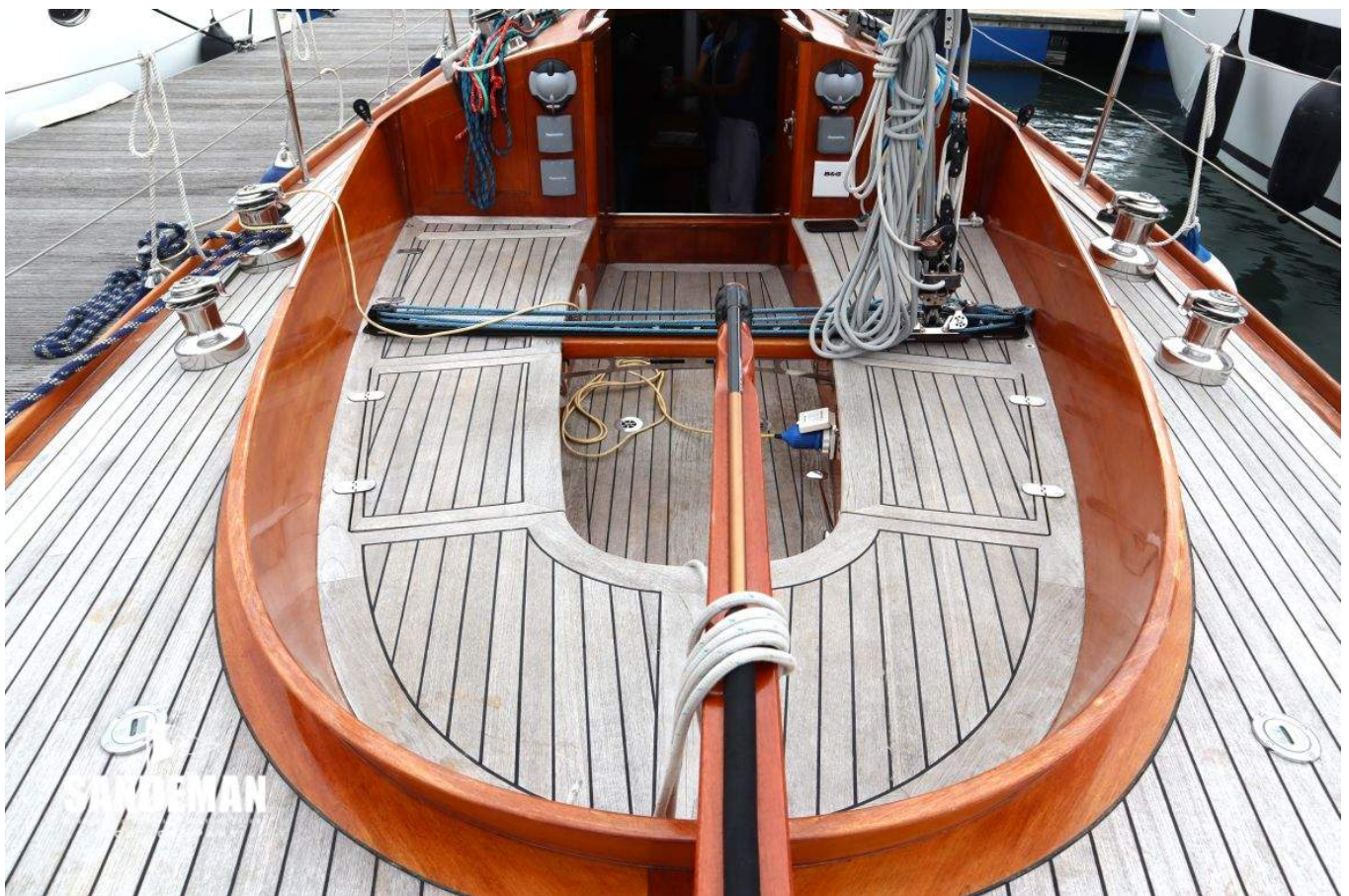








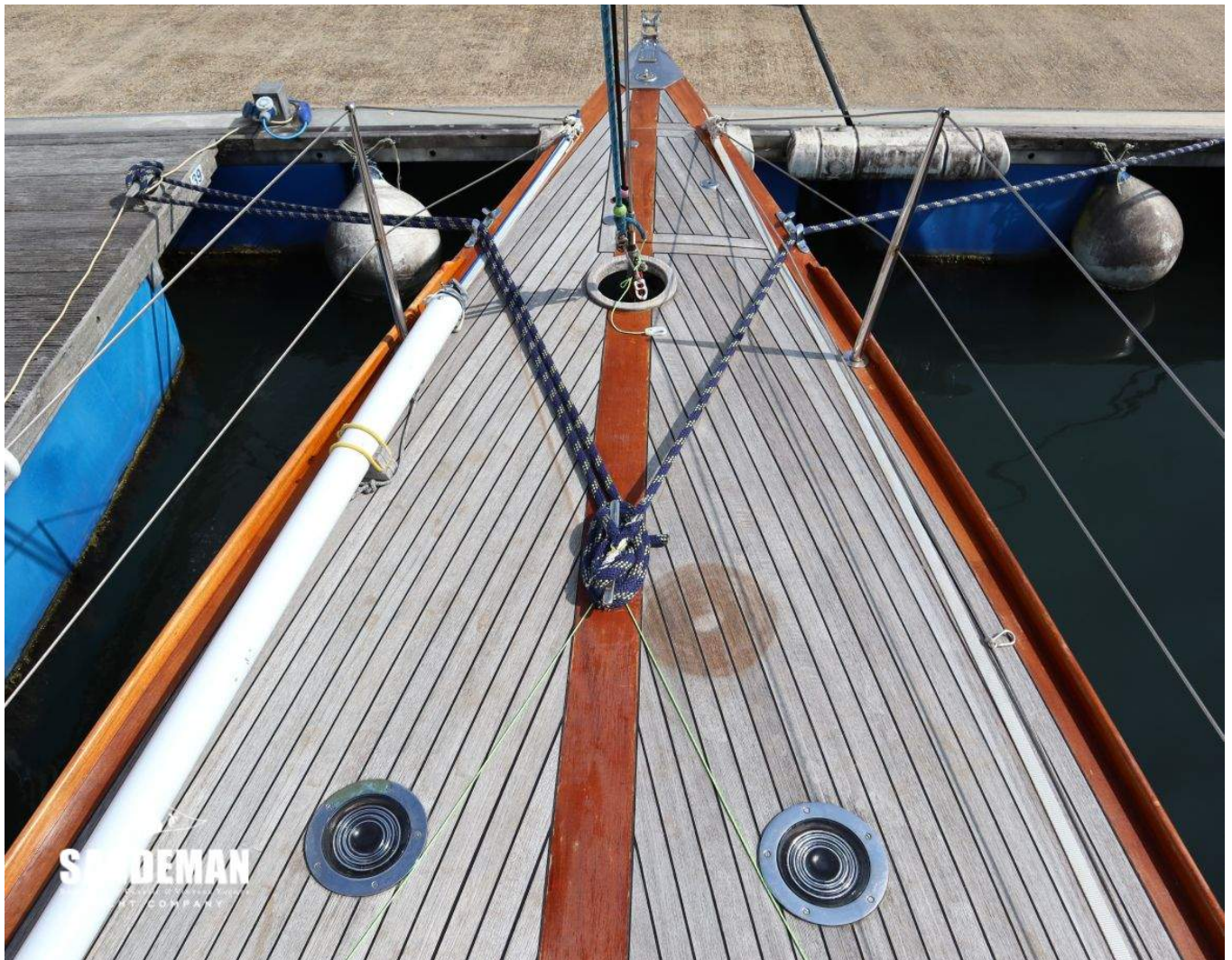














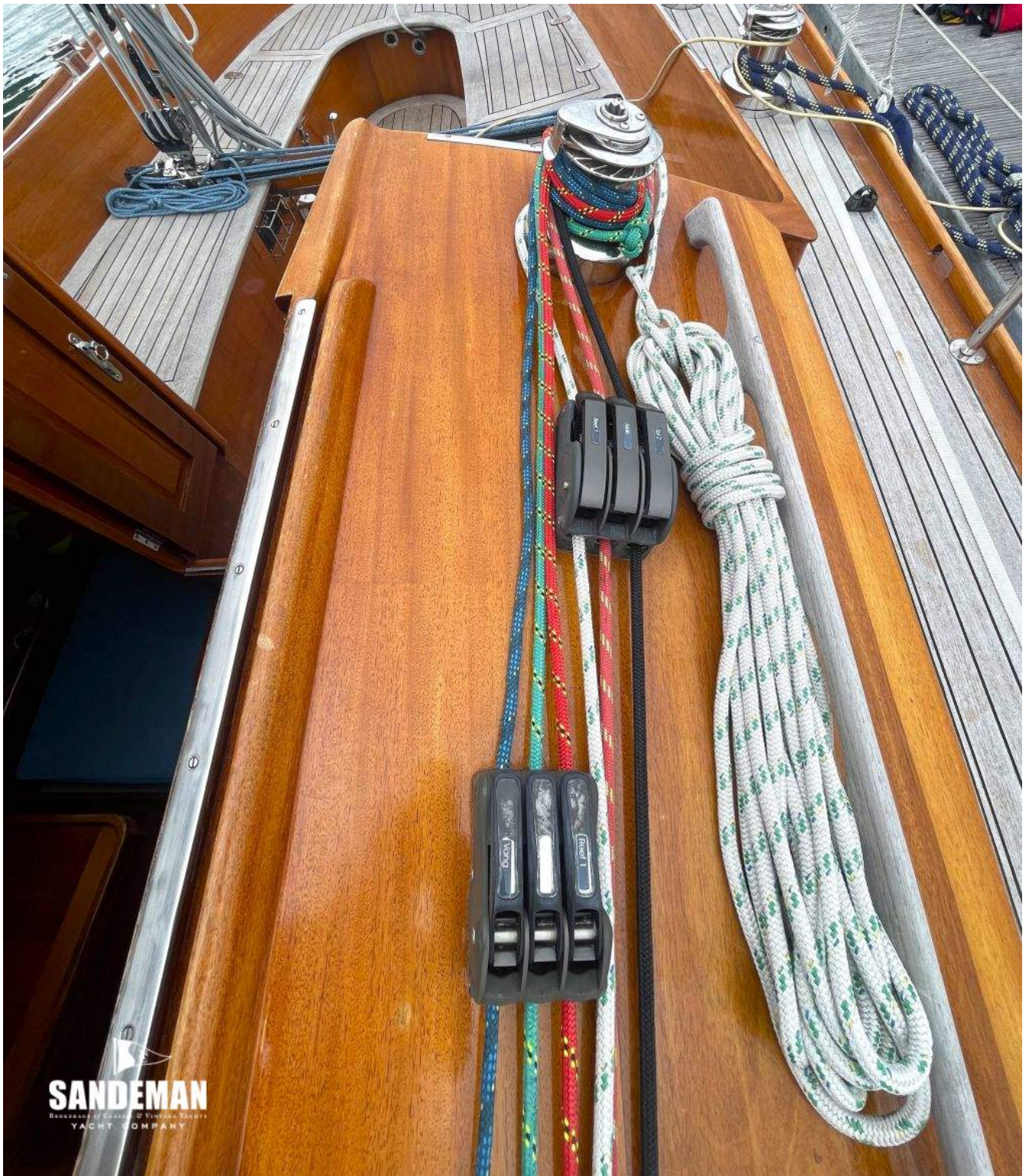




 **SANDEMAN**
SANDERSON YACHT COMPANY
YACHT COMPANY



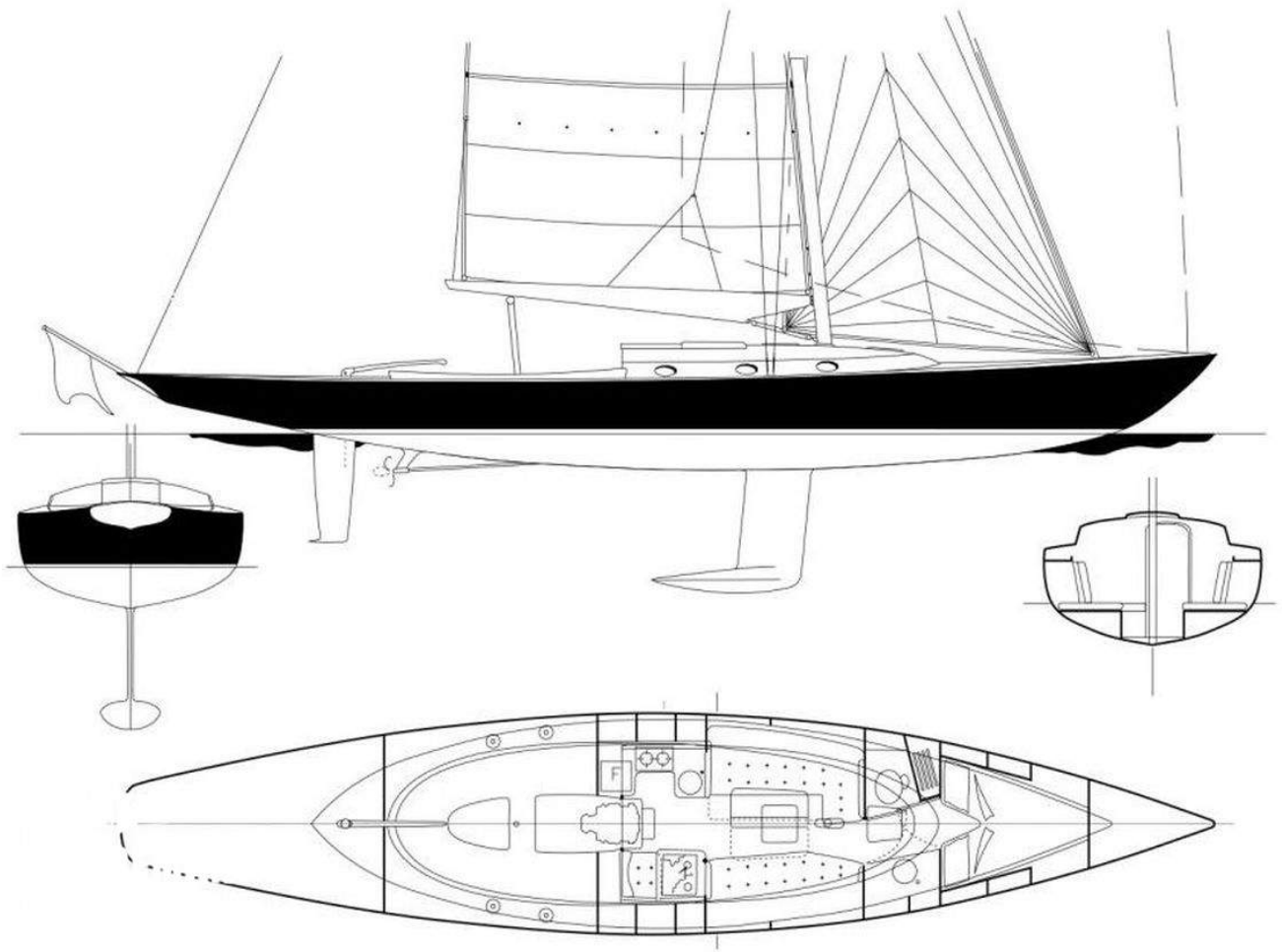












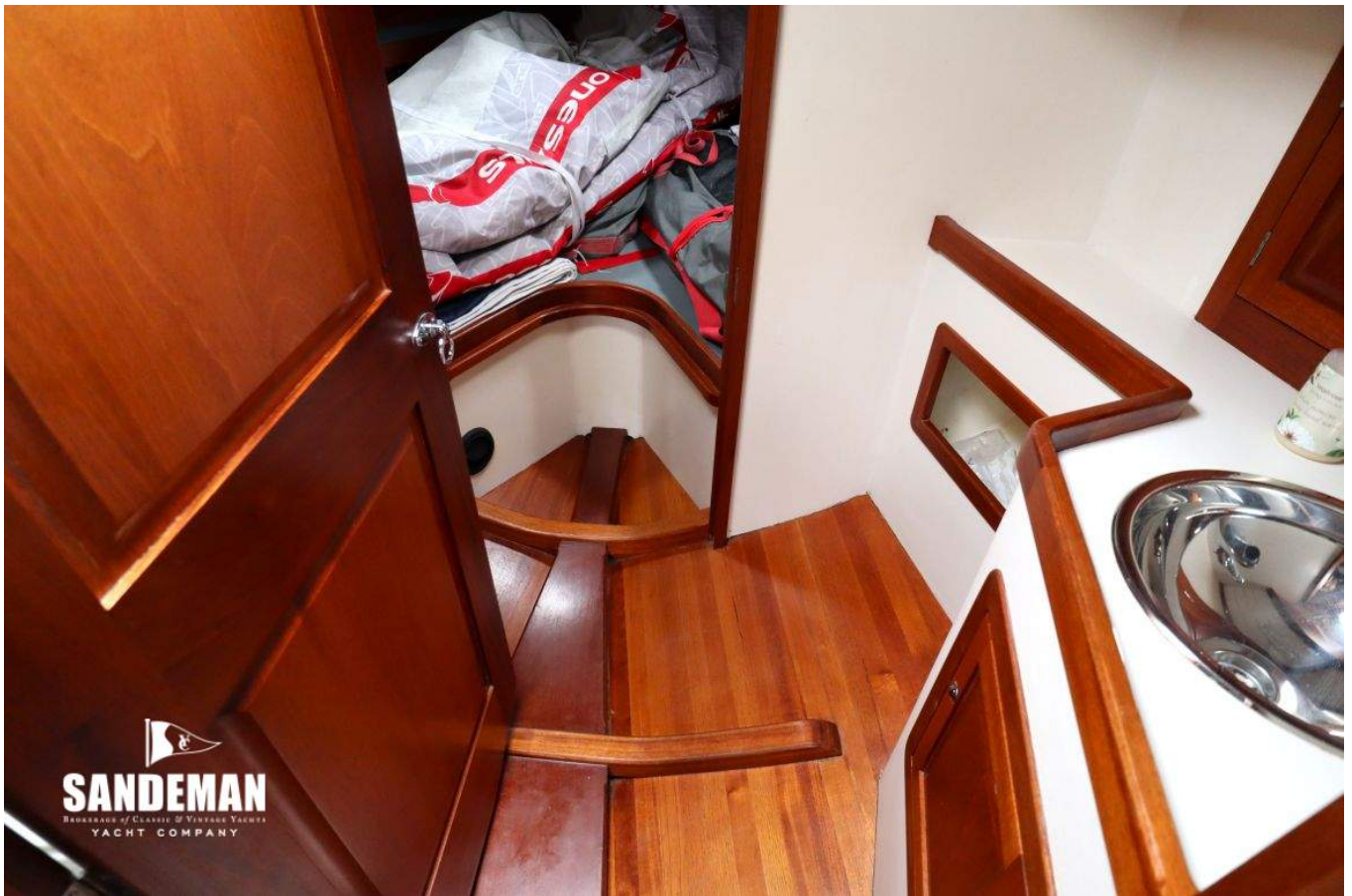


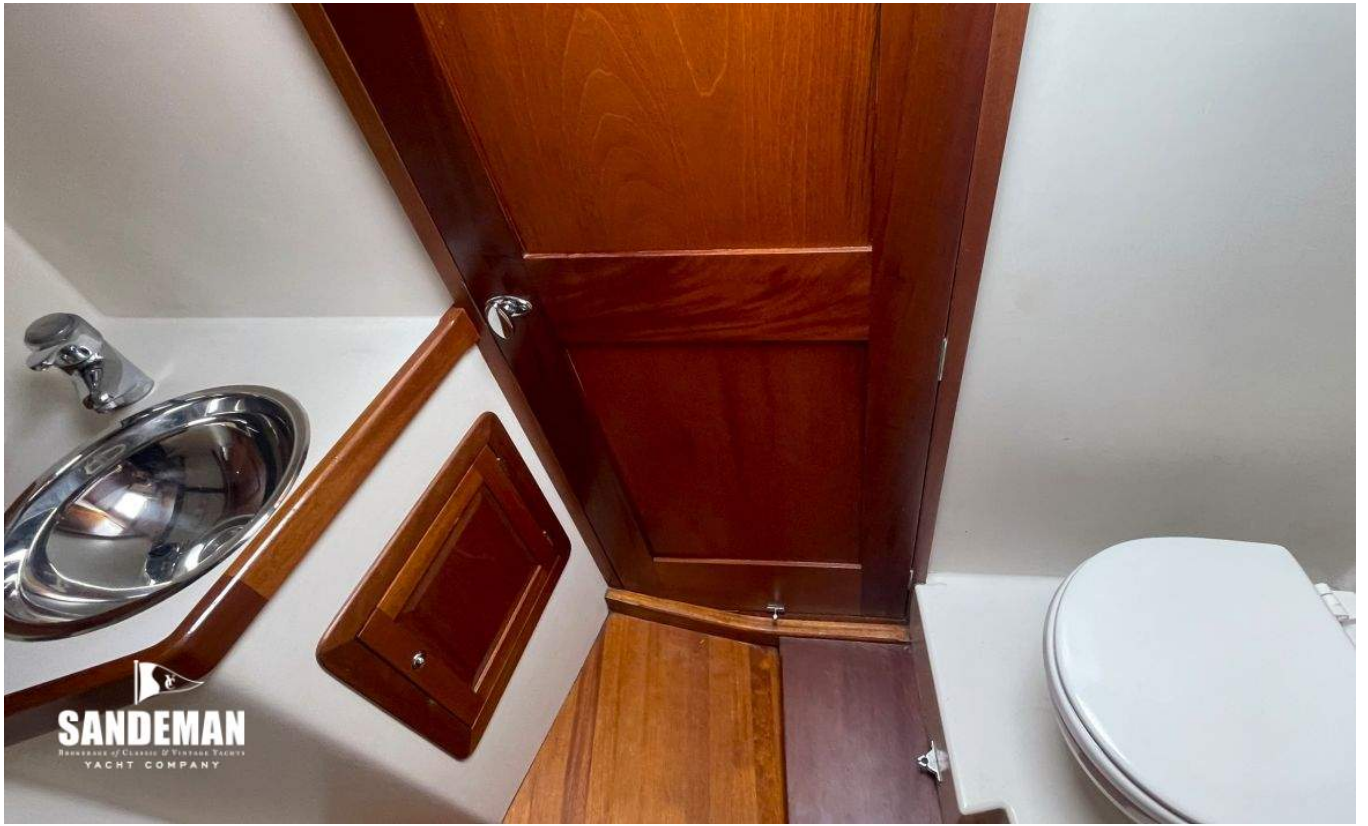







SANDEMAN
Sole Agent of Classic & Vintage Yachts
YACHT COMPANY











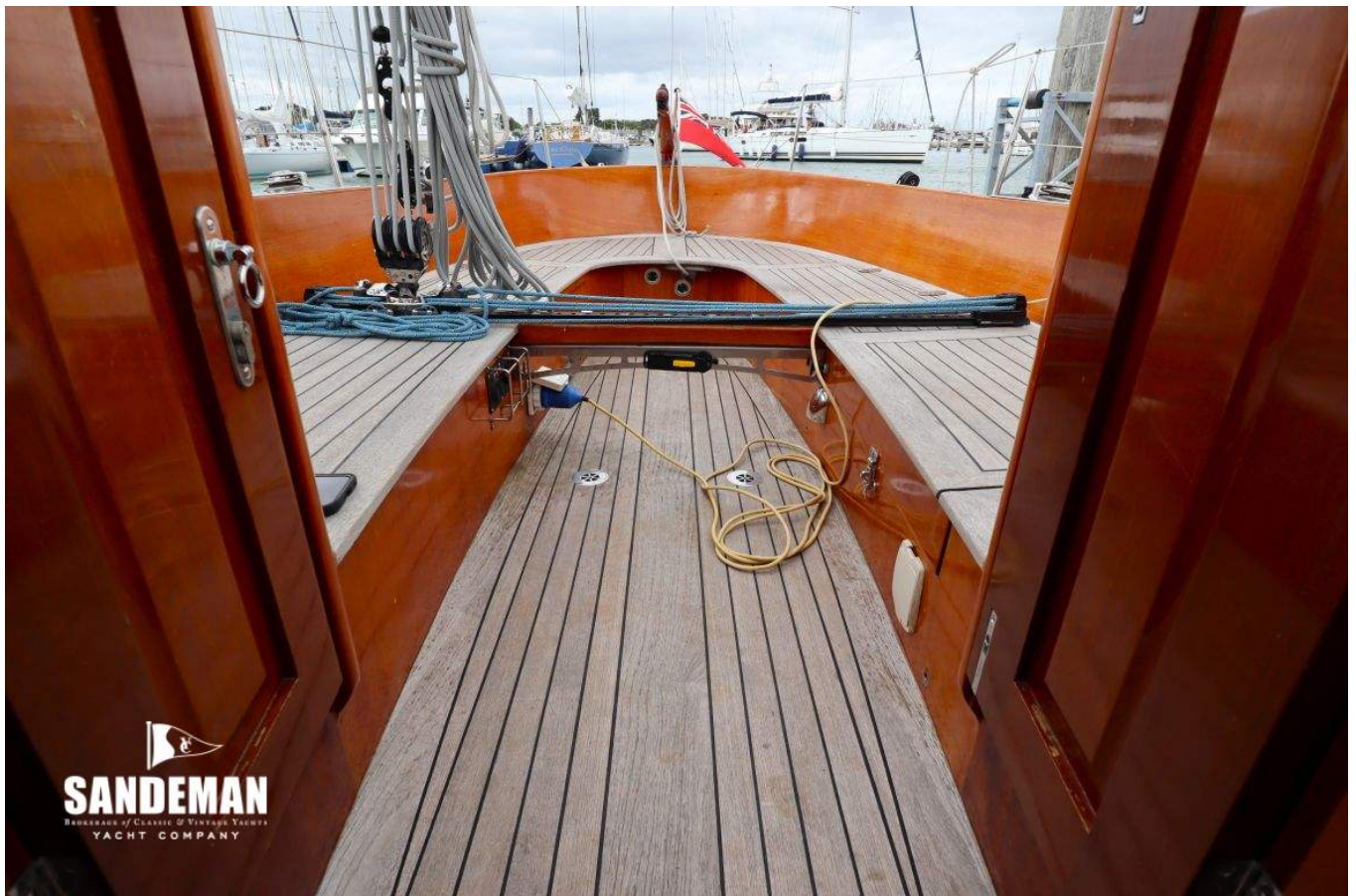


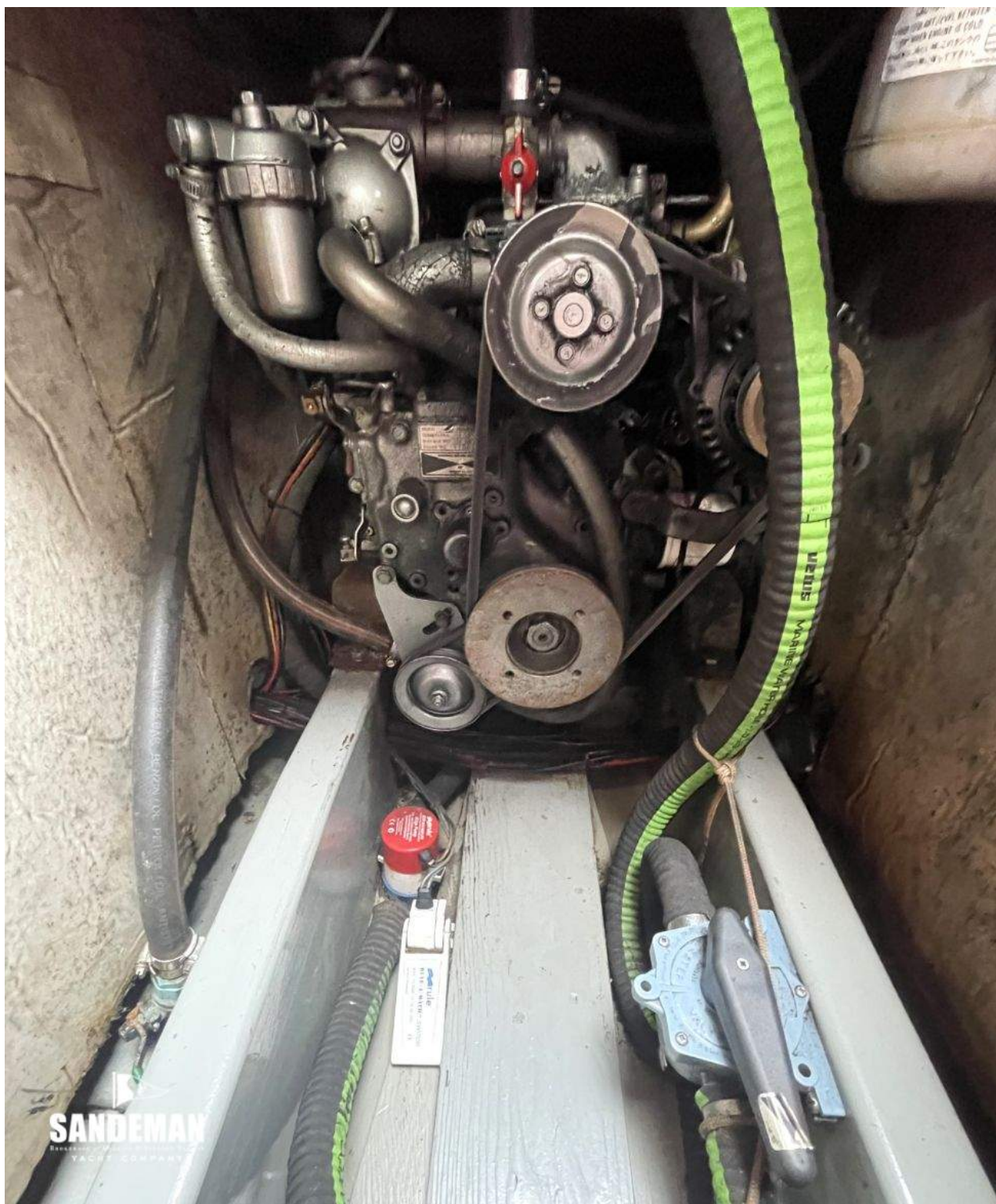

SANDEMAN
BROKERAGE OF CLASSIC & VINTAGE YACHTS
YACHT COMPANY




SANDEMAN
BROKERAGE OF CLASSIC & VINTAGE YACHTS
YACHT COMPANY







SANDEMAN
BOATWORKS & YACHTS
YACHT COMPANY

