

SPARKMAN & STEPHENS / PAUL LUKE 46 FT BERMUDAN YAWL 1958



Specification

MADRIGAL

SPARKMAN & STEPHENS / PAUL LUKE 46 FT BERMUDAN YAWL 1958

Designer	Sparkman & Stephens	Length waterline	32 ft 6 in / 9.91 m	Engine	Westerbeke-58 4-cyl 58 hp diesel
Builder	Paul E. Luke, East Boothbay, Maine	Beam	11 ft 11 in / 3.63 m	Location	USA
Date	1958	Draft	6 ft 6 in / 1.98 m	Price	USD 180,000
Length overall	46 ft 0 in / 14.02 m	Displacement	14.5 Tonnes		
Length deck	46 ft 0 in / 14.02 m	Construction	Double planked mahogany over cedar		

These details are provisional and may be amended

Specification

BROKER'S COMMENTS

There is, of course, her impeccable and superb Sparkman & Stephens/ Paul E. Luke design and build provenance, and undoubted beauty. But MADRIGAL offers a rare extra dimension: the opportunity to purchase a classic cruiser/ racer yawl at that magic 45-50 ft size range that has been much loved and well cared for by the same family since she was first launched almost 65 years ago. In the past MADRIGAL rubbed shoulders with some of the 20th Century's most famous yachts in the Newport Bermuda Race and was a regular race winner on Long Island Sound. More recently she has cruised and raced in Maine and been looked after professionally, indoors by winter, in the capable hands of Brooklin Boatyard. MADRIGAL is an American dream.



• SANDEMAN YACHT COMPANY •
• Brokerage Of Classic & Vintage
Yachts •

www.sandemanyachtcompany.co.uk

SPARKMAN & STEPHENS / PAUL LUKE 46 FT BERMUDAN YAWL 1958

Specification

HISTORY

Sparkman & Stephens Design No. 1330

Paul E. Luke Hull No. 54

Madrigal was designed for Albert B. Boardman II in 1958 and built by the Paul E. Luke shipyard in East Boothbay, Maine as hull number 54. She was launched in June of 1958 and remains in the same family today.

She was designed as a fast racer/cruiser and has excelled in both venues. She is a big-comfortable, well balanced boat, sea kindly and competitive in all breezes.

Her racing career started in 1962 with the Newport to Bermuda race and continued through the 60's, 70's and 80's in club and offshore races winning many trophies and accolades. She came back to Maine in 1982 again to compete in club races and as a favorite in the Eggemoggin Reach Regatta Classic Boat series. She competed in the first regatta in 1985 and continued until 2006 when she retired from racing.

She has been well maintained by her owner along with modern upgrades by the renowned Brooklin Boat Yard in Brooklin, Maine. She has been stored inside every year at that location out of the weather.

Specification

REFITS

2007

- Re-decked: laid teak over okoume marine plywood
- All the hardware removed and refurbished at this time
- The exposed deck beams were all treated and painted
- Raw teak raised "grub" added which trunk cabin was bedded to

- Engine removed, repainted, refitted, re-wired
- Galley restoration

1990

- Trunk cabin roof re-covered with Dynel/epoxy

1988

- Laminated sister ribs added: mast to engine beds

Specification

CONSTRUCTION

- Double planked mahogany over Virginia white cedar
- Bronze screw fastened
- 1½ x 1¾ in / 38 x 34 mm white oak ribs @ 10 in / 250 mm cc
- Laminated sister ribs, mast to engine beds (1988)
- 2 in / 50 mm sawn floors with bronze diagonal strapping
- Bronze welded mast step supporting structure
- Bronze plate knees at trunk cabin roof in way of mast

- 4.8 Tonnes lead ballast keel
- 6 x 1½ in / 38 mm bronze keel bolts
- ¾ in / 18 mm Teak laid deck on ½ in / 12 mm Okoume marine plywood (2007)
- Sawn white oak 1¼ in x 2 in / 38 x 50 mm beams @ 9 in / 225 mm cc
- Bronze rudder fittings and heel
- Teak superstructures

Specification

DECK LAYOUT, EQUIPMENT AND GROUND TACKLE

GENERAL

- Teak laid deck over marine plywood (2007)
- Varnished teak capped taffrail
- Varnished teak uncapped toerails
- Custom painted cast solid bronze 2-wire stanchions
- Gates port and starboard
- 1 in / 25 mm Stainless stern and bow pulpits
- All deck fittings in bronze

- 2 x Barient chromed No. 32 self-tailing sheet winches
- 2 x Associated Herreshoff pattern cleats
- Morse engine throttle control beside helm
- Engine instruments panel
- Bridge deck to Companionway
- Teak winch handle pockets port and starboard

SIDE DECKS

FROM AFT

AFT DECK

- V-boomkin with bobstay with padeye for for mizzen sheet block
- Mooring fairleads taffrail port and starboard
- Sheet block padeyes taffrail port and starboard
- Mooring fairleads faired into toerail port and starboard
- Herreshoff pattern mooring cleats port and starboard on boomkin sockets
- Main mast backstay chainplate
- Mizzen mast position
- 2 x Varnished teak lazarette hatches
- Ronstan alloy mainsheet traveller and car on varnished teak base
- Chromed double headsail sheaves at rail port and starboard

COCKPIT

- Well type cockpit with seating as extension of deck
- Teak low profile side coamings
- Lockers port and starboard under lift lid seats
- Plate to under deck rudder head for emergency steering
- 2 x Chromed Merriman winches for mainsheet track purchase
- 2 x Associated Herreshoff pattern cleats
- Steering pedestal; bronze and glass binnacle
- Edson type ship's wheel
- Granny bar protection
- Fold up cockpit table
- 2 x Non self-tailing chromed secondary winches
- 2 x Associated Herreshoff pattern cleats

- Bronze headsail tracks at toerails port and starboard
- Varnished pinrails port and starboard at shrouds

TRUNK CABIN

- Varnished teak uprights
- Dynel/epoxy roof (1990)
- Varnished teak handrails port and starboard
- Spinnaker pole stowage to starboard
- 4 x Ports port and starboard; 1 x forward (3 x opening)
- Teak companionway hatch with garage
- Datamarine link 5000 repeaters unit
- Barient No. 16 chromed mainsheet winch to port
- Danforth anchor stowage
- Teak and plexiglass hatch over saloon
- Main mast position
- Dorade boxes with large cowl vents port and starboard
- Stainless steel stove pipe to port
- 2 x Barient No. 16 chromed winches for jiffy reef system
- Associated wood cleats with elasticated protectors
- Teak fore hatch over forecabin

FOREDECK

- Dorade box; plexiglas top; large vent cowl
- 2 x Herreshoff mooring cleats
- Lewmar V2 anchor windlass offset to starboard
- Vertical chain gipsy
- Inner forestay chainplate
- Custom bronze stemhead fitting incorporating 2 x faired-in mooring fairleads

Specification

ACCOMMODATION AND DOMESTIC EQUIPMENT

DOWN 5 x STEPS OVER ENGINE BOX

- 6 ft 5 in / 1.96 m headroom
- White painted; varnished mahogany and teak; green upholstery
- Teak and holly cabin sole
- 7 x Berths: 2 x forward; 4 x adjustable amidships; nav station; quarter berth
- All berths have lee cloths
- 2 x Toilets (1 x main with shower)

U- SHAPED GALLEY TO PORT

- Aft facing athwartships stainless steel sink and associated surfaces
- Foot pump for fresh water
- Chromed seawater pump
- Stainless steel ice box
- Grunert engine-driven refrigeration
- Full day refrigeration on 1 hour engine charge
- Broadwater 4-burner LP gas stove with oven
- Extensive food plates and utensil stowage
- Forward Stowage unit and mahogany top surface
- Bronze opening port
- Deckhead light
- Bulkhead light with shade

QUARTER BERTH AND NAVIGATION AREA TO STARBOARD

- Sideboard adjacent to companionway
- Drawers under; locker over
- Book shelf aft
- Generous quarter berth
- Stowage under
- Battery switches under

- Stowage under all berths
- Gimballed mahogany drop leaf table offset to port
- Ernest J. Maiwald bronze and soapstone solid fuel stove
- Flue runs into and heats WC Compartment

- 2 x Non-opening ports
- 2 x Reading lights

Port forward bulkhead

- Clock and barometer

- Gimballed oil lamp and smoke hood

- Bulkhead light with shade

Starboard forward

- Bulkhead light with shade

Deckhead

- Fore and aft grabrails port and starboard
- Teak and plexiglass hatch
- 2 x Deckhead lights

PASSAGE FORWARD

- Buffet sideboard to starboard
- Drawers under; locker over outboard
- 1 x Non-opening ports
- Deckhead light
- Mast to port
- Large hanging locker to starboard forward

WC/ SHOWER COMPARTMENT TO PORT

- Wilcox Crittenden “Skipper” manual toilet
- Personalised wood seat
- Solid fuel stove flue offers heat

- Chart table; chart stowage under
- Rolled chart stowage in deckhead
- Navigation and communications units
- Ship's breaker panel
- Bronze opening port
- Deckhead light over chart table

SALOON

- Traditional layout
- Adjustable settee/ berths port and starboard with pilot berths outboard

- Stainless and sink and tops outboard
- Footpump and chromed faucet
- Lockers and drawers
- Bronze opening port
- Deckhead light

FORECABIN

- Single berths to port and starboard
- Stowage under
- WC concealed between berths forward
- Chain locker forward
- Deckhead light
- 3 x Reading lights
- 1 x Gimballed oil lamp
- AGA Correa inverted Bunk compass over the port berth
- Access forward to chain locker and stowage

Specification

MECHANICAL, ELECTRICAL AND TANKAGE

MECHANICAL

- Westerbeke 58 - 58 hp 4-cylinder diesel
- c. 1800 hrs
- 7 Knots at 1800 rpm using only 1.5 Gals / hour
- Hurth HBW-150 2R reduction gear
- 18 x 12 in 2-Bladed bronze propeller
- 1¼ / 32 mm Aquamet shaft
- Single lever Morse control
- Chain and wire steering

- 2 x 6-D Deep cycle house batteries forward
- Group 74 engine battery
- Cole Hersee separate or dual battery switch
- Bass lighting and switch panel

TANKAGE

- 55 Gal Stainless steel fuel tank under cockpit sole
- 100 Gal Stainless steel water tank
- 20 Gal bronze sump

ELECTRICAL

- 12 Volt DC charging system via 50 A Balmar 50 dual output alternator

Specification

NAVIGATION AND COMMUNICATIONS

NAVIGATION

- White 'Constellation' steering compass in bronze and glass binnacle
- AGA Correa inverted Bunk compass
- Garmin 2010-C large panel GPS chart navigation
- Datamarine link 5000 system: depth; wind angle; speed; VMG

COMMUNICATIONS

- ICOM IC-M324 VHF radio with EPIRB capability
- Alpine stereo with dual separate speakers

Specification

RIG, SAILS AND CANVASWORK

RIG

- Heavy section painted aluminum

Main mast

- LOA 59 ft / 18 m; wood spreaders
- Tides sail track to accommodate fully battened main
- Chromed spinnaker pole track forward
- Internal main and 2 x foresail halyards
- Bronze tracks alongside to adjust whisker pole or reaching strut
- Main boom with bronze track

Mizzen mast

- LOA 31 ft / 9.5 m
- Mizzen boom with bronze track

Standing rigging

- 1 x 19 Stainless wire standing rigging
- Bronze turnbuckles

- Barient backstay tensioner
- Barient downhaul adjuster

SAILS

- All 1997 and serviced annually
- Full battened Dacron mainsail
- Laminated Mylar working jib
- Dacron mizzen (newer)
- UK Tape Drive Mylar composite racing jib (little used)
- 1.5 oz Spinnaker
- Various reachers, drifters, storm sails
- Harken roller furling
- All headsail fitted for roller headstay

CANVASWORK

- Sprayhood/ dodger over companionway hatch

Specification

SAFETY

- 2 x Type IV horseshoe lifebelts
 - Life Sling man overboard system
 - 8 x PFDs
 - 3 x Personal inflatable collars
- Flare gun & box
 - Edson emergency bilge pump
 - Rule 400 electric bilge pump
 - Emergency tiller
 - Searchlight

Specification

OTHER EQUIPMENT

- Various Dacron sheets and lines
 - 2 x 1" Superbraid coils of 150 ft / 46 m each anchor rode
 - 2 x Danforth #35 anchors with 5/16 in / 8 mm galvanized chain
- 4 x inflatable fenders in socks
 - Custom boarding ladder

Disclaimer

These particulars have been prepared from information provided by the vendors and are intended as a general guide. The purchaser should confirm details of concern to them by survey or engineers inspection. The purchaser should also ensure that the purchase contract properly reflects their concerns and specifies details on which they wish to rely.

SPARKMAN & STEPHENS / PAUL LUKE 46 FT BERMUDAN YAWL 1958

[Specification](#)
GALLERY





SANDEMAN
Restoration of Classic & Vintage Yachts
YACHT COMPANY






SANDEMAN
SANDERS & COMPANY YACHT COMPANY
YACHT COMPANY












SANDEMAN
BROKERAGE OF LUXURY & PRESTIGE YACHTS
YACHT COMPANY






SANDEMAN
DEALER OF CLASSIC & VINTAGE YACHTS
YACHT COMPANY




SANDEMAN
RESTORERS OF CLASSIC & MODERN YACHTS
YACHT COMPANY




SANDEMAN
SAILBOAT & YACHT COMPANY
YACHT COMPANY






SANDEMAN
REPRESENTATIVE OF CHINA'S YACHTING INDUSTRY
YACHT COMPANY




SANDEMAN
Sole Importers of C. Heide & Son's Yachts
YACHT COMPANY

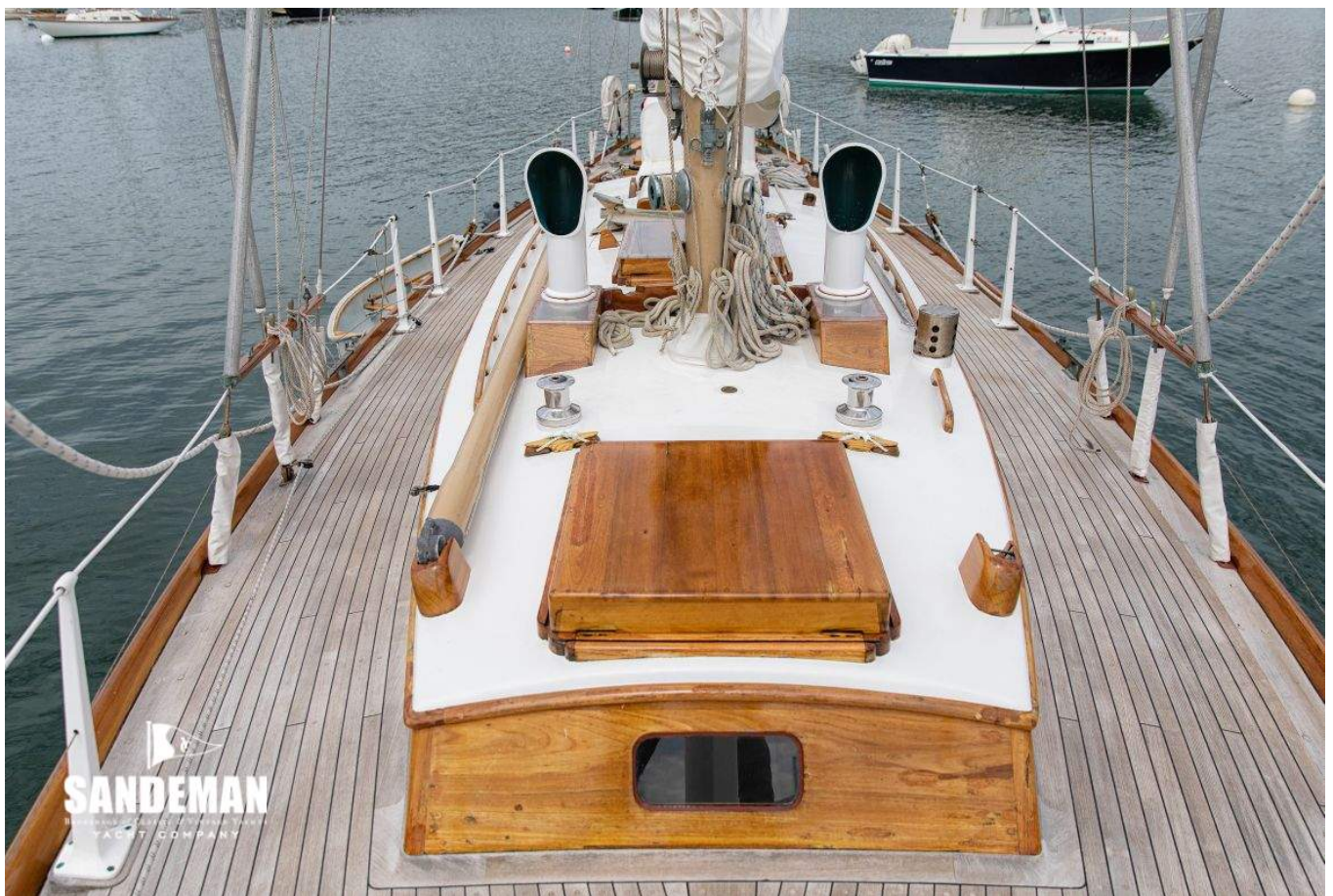









SANDEMAN
BROKERAGE OF CLASSIC & VINTAGE YACHTS
YACHT COMPANY










SANDEMAN
EXPERIENCE IS KNOWLEDGE © THE SANDERMAN
YACHT COMPANY




SANDEMAN
SPECIALIST IMPORTERS OF VERNACULAR YACHTS
YACHT COMPANY




SANDEMAN
SANDERSON YACHT COMPANY
YACHT COMPANY





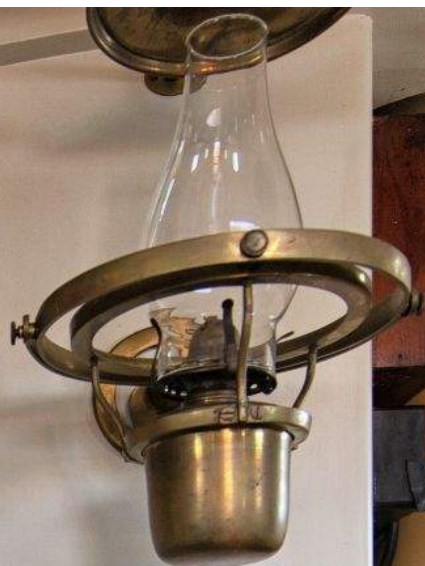

















SANDEMAN
BUILDERS OF CLASSIC & VINTAGE YACHTS
YACHT COMPANY








SANDEMAN
REBUILDERS OF CLASSIC & VINTAGE YACHTS
YACHT COMPANY














SANDEMAN
SANDERSON YACHT COMPANY
YACHT COMPANY



SANDEMAN
SPECIALTY CRAFTED YACHTS
YACHT COMPANY




SANDERSON
RESTORERS OF CLASSIC & MODERN YACHTS
YACHT COMPANY











SANDEMAN
DESIGNERS & BUILDERS OF YACHTS
YACHT COMPANY

Bass Products, Inc., Salem, MA, USA

