

WILLIAM FIFE 71 FT CUTTER 1926



Specification

HALLOWE'EN

WILLIAM FIFE 71 FT CUTTER 1926

Designer	William Fife III	Length waterline	53 ft 6 in / 16.3 m	Engine	Cummins 80 HP Diesel
Builder	William Fife, Fairlie	Beam	14 ft 5 in / 4.4 m	Location	Mediterranean
Date	1926	Draft	9 ft 10 in / 3 m		
Length overall	79 ft 5 in / 24.2 m	Displacement	38 Tonnes		
Length deck	71 ft 6 in / 21.8 m	Construction	Teak planking on oak frames		

These details are provisional and may be amended

Specification

BROKER'S COMMENTS

HALLOWEEN is highly recommended to anyone desiring a fast classic wooden sailing yacht. She is considered one of the most beautiful Fifes ever built and is still winning classic regattas yet able moreover to make fast ocean passages. With her new and intelligent deck layout she can be sailed by only two people for short deliveries and can race with a crew of 6, yet maintains all her traditional beauty and charm. It is understood notwithstanding the restoration that now in 2015 there is some structural work to be done on this yacht.



• SANDEMAN YACHT COMPANY •
• Brokerage Of Classic & Vintage
Yachts •

www.sandemanyachtcompany.co.uk

WILLIAM FIFE 71 FT CUTTER 1926

Specification

HISTORICAL NOTES

Built by William Fife III in 1926 on the Clyde in Scotland as the Yawl rigged COTTON BLOSSOM IV she dominated ocean racing for many years, and has held important records. Renamed HALLOWE'EN she was carefully restored to her original lines at the Classic Boat works in Newport, Rhode Island from 1988 to 1991. All the sawn English Oak frames were carefully repaired or replaced, the planking using new bronze fastenings made in the museum.

During the winter of 2008 / 9 she went to the UK, where the expert craftsmen at Fairlie Restorations carried out some important structural work to the hull and keel. a full photographic record is available on request.

Following some major works in 1994 / 5 in France, she again underwent a transformation in '98 / 9, looking now perhaps better than at any time during her long and eventful life. She was optimised for shorthanded cruising / racing, with revised plans by the Van de Stadt office. A new mast beautifully built by the team at the Pasqui workshops in Villefranche, and some new Meissner winches completed this refit.

Specification

CONSTRUCTION

Originally built under Lloyd's Special Survey of 1½ in teak planking on a frame of teak and selected British oak, and granted on completion the then top classification for wood yachts, 'A18 Years A1'. The quality of build was, of course, up to the usual Fife yard standard, honouring her designer's strict specification wording:

"The whole of the materials used in the yacht to be the best of their kind and of the best workmanship and finish, and to the satisfaction of the owner or his representative."

- Teak planking on oak frames
 - Teak deck
 - Teak superstructures
-

Specification

DECK EQUIPMENT AND GROUND TACKLE

- 1 x 3000 W Lewmar electric anchor windlass 1998
- 100 m Galvanised 16mm diam anchor chain
- 11 x Chromed bronze Meissner winches 1999
- Easy access swimming ladder to and from water

- Zodiac tender with 15hp 4 stroke engine
 - Snorkelling equipment
 - 12 V Dive compressor with 5m depth on hose 2007
-

Specification

ACCOMMODATION AND DOMESTIC EQUIPMENT

Accommodation summary

- 4 x Guests in 2 cabins
- 3 x Crew members in 2 berths 2 x pipe cots
- 2 x Lavac electric WC 1999
- CD / iPod stereo system with deck speakers 2007

Galley

- Refrigerator 60 litres 2007
 - Deep freezer portable 30 litres 2014
 - Extractor fan 150W 1999
-

Specification

RIG, SPARS AND SAILS

- Spruce spars, including mast, main boom and staysail boom – 1999
- Spinnaker pole
- Standing rigging – 1 x 19 according to Peter Martin Rigging specifications 2007
- Running rigging – Dyneema
- 36 x Dryade wooden blocks – 1999

- Staysail – 40 sq. m 2011
- Overlapping fraction genoa on tuff luff and Facnor furler
- Reacher – 210 sq. m 1998
- Yankee – 50 sq. m 2007
- Asymmetrical Spinnaker 360 sq.m 2014
- Asymmetrical Spinnaker 340 sq.m 2007

All sails made by North Sails

- Mainsail – 168 sq. m 2011
- Yankee – 110 sq. m 2011

- Snuffer 2007
- Trysail 2007
- Delivery mainsail 2004

Specification

MECHANICAL ELECTRICAL AND TANKAGE

- Cummins Diesel 4 cylinder engine 80 HP 1989,
- Hurth 2.2 ratio gearbox – full rebuild 2014 incl thrust coupling
- AquaDrive Cardon Shaft
- 7.5 knots cruising speed
- 8 litres / hour fuel consumption
- 300 nm range
- 300 litre stainless steel fuel tank 1998
- 700 litre stainless steel fresh water tank 1998
- 800 Ah 12V 90 A
- Service Alternator 2014
- 4 x Bilge pumps – 1998
- 2 x Fresh water pumps – 2014
- Pump for rinsing deck and chain – 1998

Specification

NAVIGATION, COMMUNICATIONS AND ELECTRONICS

- Ray Marine autopilot 2007
- Ray Marine GPS 2007
- B&G Hydra 2000 navigation system
- Ray Marine radar 2007
- Northstar VHFwith Hand held link 2007
- 2 x Icom handheld VHF
- Toshiba PC
- HP 150 mobile scanner, printer 2014

Specification

SAFETY

- 2 x Sea Safe 6 man life raft 2014
- 1
- x Sea Safe 4 man life raft in Valise

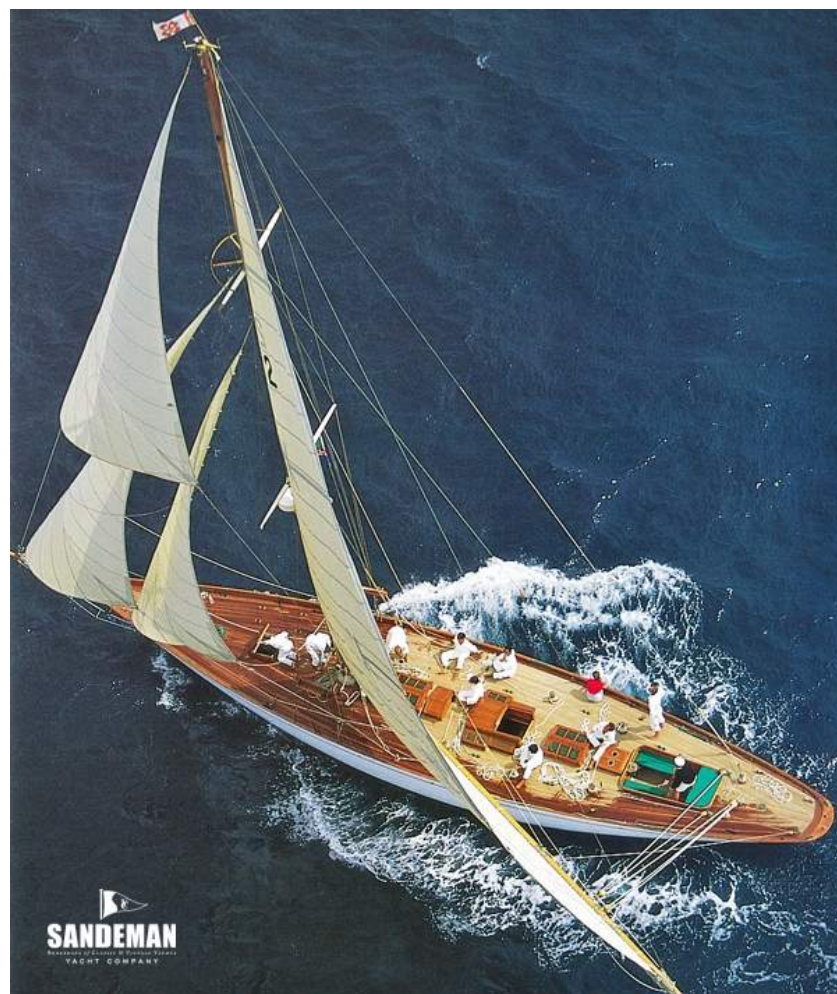
Disclaimer

These particulars have been prepared from information provided by the vendors and are intended as a general guide. The purchaser should confirm details of concern to them by survey or engineers inspection. The purchaser should also ensure that the purchase contract properly reflects their concerns and specifies details on which they wish to rely.

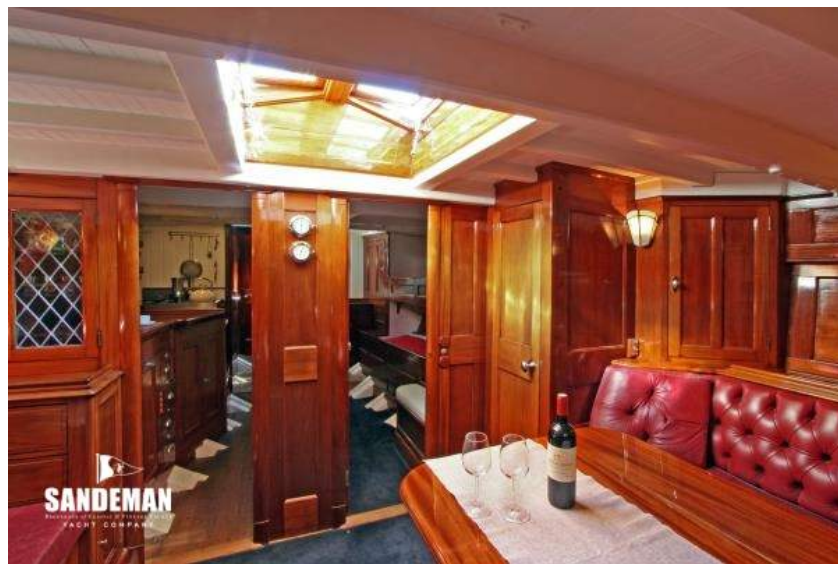
WILLIAM FIFE 71 FT CUTTER 1926

Specification
GALLERY







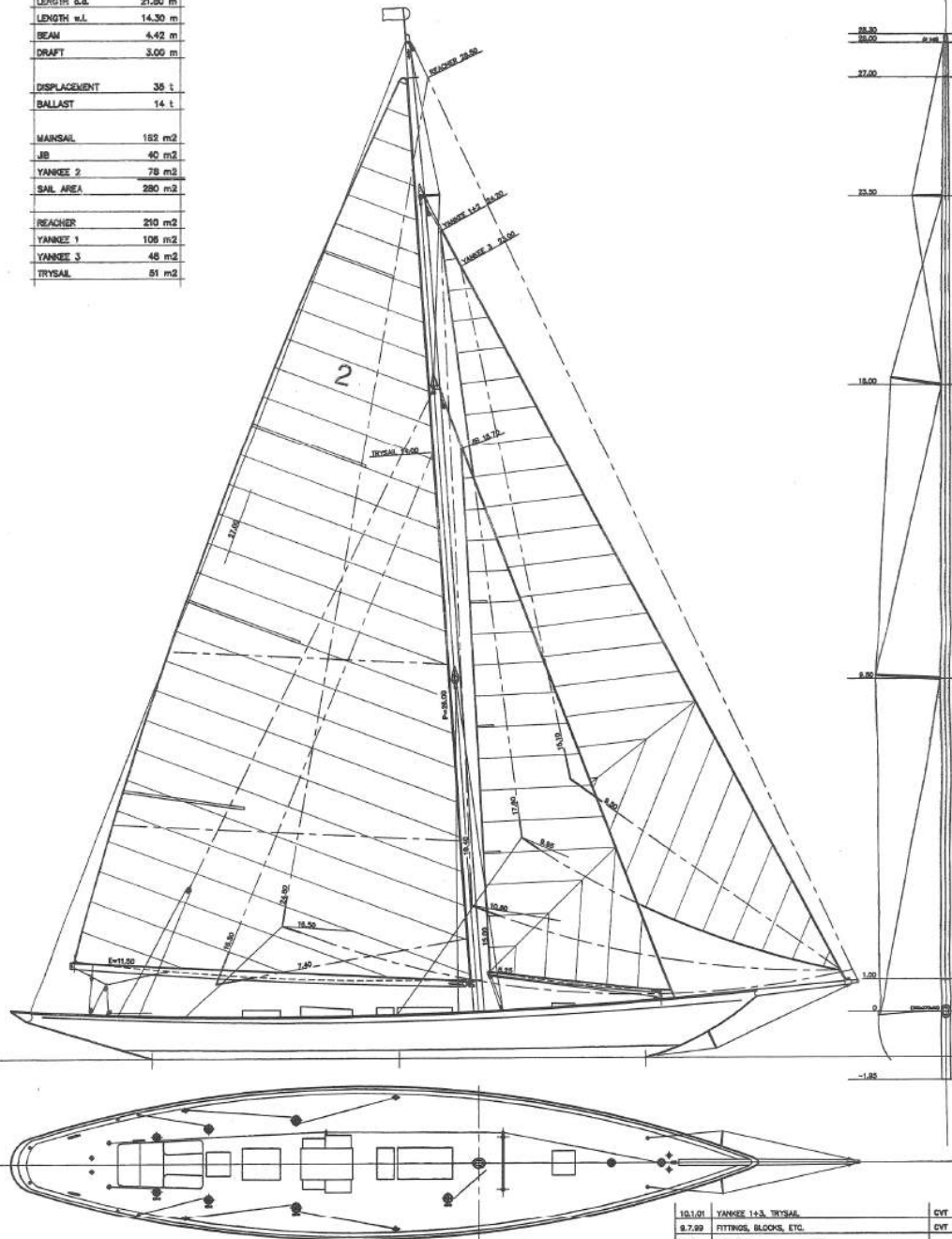






HALLOWE'EN

Designer	Millem Fife	1926
LENGTH o.d.	21.80 m	
LENGTH w.l.	14.30 m	
BEAM	4.42 m	
DRAFT	3.00 m	
DISPLACEMENT	35 t	
BALLAST	14 t	
MAINSAIL	152 m ²	
JIB	40 m ²	
YANKEE 2	78 m ²	
SAIL AREA	280 m ²	
REACHER	210 m ²	
YANKEE 1	106 m ²	
YANKEE 3	46 m ²	
TRYSAIL	81 m ²	



ALL RIGHTS OF THIS DESIGN
AND DETAILS ARE RESERVED
It is not to be used for any other
purpose without the written consent of
the designer. The designer is not
responsible for any damage or loss
resulting from the use of this design.

10.1.01	YANKEE 1+3, TRYSAIL	CVT
9.7.99	FITTINGS, BLOCKS, ETC.	CVT
DATE	ALTERATION	
VAN DE STADT DESIGN G.E. VAN DE STADT & PARTNERS BV PO BOX 160 1816 AD VRIJHOEF, HOLLAND TEL. 0224-611100 FAX 0224-611101 E-MAIL: info@vdstadtdesign.nl WWW: www.vdstadtdesign.nl		
SAIL PLAN		SCALE 1:100
HALLOWE'EN		CVT
		DATE 18-08-99
		BY 624-S-08

