

REG FREEMAN-ATTRILL 40FT TWIN SCREW MOTOR YACHT 1966/2007



Specification

DELFINO

REG FREEMAN-ATTRILL 40FT TWIN SCREW MOTOR YACHT 1966/2007

Designer	Reg Freeman	Length waterline	39 ft 0 in / 11.89 m	Engine	2 x Perkins M130 6-cylinder 260 hp diesels
Builder	H. Attrill and Sons, Bembridge	Beam	12 ft 2 in / 3.71 m	Location	United Kingdom
Date	1966	Draft	4 ft 7 in / 1.4 m	Price	GBP 195,000
Length overall	40 ft 0 in / 12.19 m	Displacement	14 Tonnes		
Length deck	40 ft 0 in / 12.19 m	Construction	Carvel pitch pine on oak		

These details are provisional and may be amended

Specification

BROKER'S COMMENTS

Reg Freeman's clever design for DELFINO creates a great sense of space, enhanced in current ownership by the addition of an enclosed wheelhouse for the upper, previously open, steering position. She was professionally rebuilt, refitted and repowered to a high standard 2003 to 2007 and has been significantly upgraded 2018 to 2019 in present ownership. Both meticulous renovations have ensured she has been brought up to date with the comforts, reliability, practicality and safety features expected of a modern vessel, whilst retaining her classic appeal and character. This is a beautiful and practical vessel for a discerning buyer.



• SANDEMAN YACHT COMPANY •
• Brokerage Of Classic & Vintage
Yachts •

www.sandemanyachtcompany.co.uk

REG FREEMAN-ATTRILL 40FT TWIN SCREW MOTOR YACHT 1966/2007

Specification
RESTORATION/ REFIT

2023-2024 AT BUCKLER'S HARD

- New starboard prop shaft to replace original
- (port shaft was replaced by a previous owner)
- Cutlass bearings renewed
- Propellers cleaned and balanced
- Hull and boottop painted
- Underbody antifouled.
- Taking back to bare wood and revarnishing of:
 - bulwarks, handrail, hatches
 - parts of the stern cabin
 - forward part of saloon
- Windlass fittings re-chromed.
- New lightweight sun protection covers for:
 - saloon, wheelhouse and aft cabin

2018 - 2021 AT HYTHE, HANTS BY BUCKLERS HARD BOATBUILDERS

- Hull above waterline splaned
- Exterior taken back to bare wood
- New enclosed flybridge designed and constructed
- 2-step boarding ladder with rescue/ swimming extension
- Double bow roller to incorporate Bruce anchor
- Transom stainless steel edge protectors
- Fixed stern ladder
- Lazarette drainage rerouted through transom
- Stainless steel outboard bracket formed
- Aluminium engine room air vents replaced in teak
- Dorade boxes replaced
- Manual toilets replaced with electric versions
- Ancillary switches consolidated to single instrument panel
- Shafts and propellers coated in resistant coating
- New deck saloon door and chart table flap
- Residual current device for shore power fitted
- New storage lockers in stern cabin
- New mattresses in stern cabin
- Hatch and night screen in stern cabin

- New flag locker in wheelhouse
- New remote stern gland greaser
- Deck light prisms in forecabin/ companionway/ aft heads
- Porthole surrounds re-chromed
- New TV and aerial

ANNUAL PROFESSIONAL MAINTENANCE IN CURRENT OWNERSHIP

- Hull repainted including boottop and antifouling
- Brightwork revarnished
- Engines serviced
- Anodes replaced
- Seacocks serviced
- Stern glands checked

2003 - 2007 AT DUMBARTON, SCOTLAND BY NEW HORIZONS BOAT BUILDERS

The hull was stripped and all planks (including 50% of the topsides replaced), frames, stringers, beams and fastenings inspected and replaced as required. Hull and decks were fully raked out, re-caulked and re-seamed. Further refit works included

- New deckhead to saloon and owners cabin
- New rubbing strake
- Refurbished port lights
- All deck hardware replaced including Dorade vents, mooring cleats, bow roller
- New stanchions and guardrails
- New davits and engine lift hoist
- Teak deck lockers forward
- Cockpit rebuilt incorporating twin gas bottle locker and stowage
- All through-hull Blake valves fully serviced
- Original electrical systems stripped out and new wiring professionally installed
- Forward head and bulkheads re-lined
- Aft cabin & head entirely re-built; berth, drawers, desk, lockers, bulkheads, shower stall.

Specification
HISTORY

R.F. FREEMAN DESIGN NO. 275

Highly respected and versatile naval architect Reg Freeman loved boats and spent his long working life from the late 1920s designing, surveying, selling and sailing them. His motor yacht designs along refined fishing boat lines were always sensible with character and spacious, well conceived accommodation, and most of them were built by Gordon and Michael Attrill of H. Attrill & Sons, St Helens, Bembridge Harbour, Isle of Wight.

DELFINO's relatively shallow draft and the original low profile house and lowering mast suggest that her first owners, Ron and Dorothy Lovatt of Poole, Dorset, later Yarmouth, Isle of Wight, may have been keen canal and river cruisers. DELFINO replaced their 1962 34ft/ 10m steel twin screw

At some point in the 1980s DELFINO moved north to the Firth of Clyde and she subsequently became DOLPHIN OF RHU. By the early 2000s her structure needed much attention and in 2002 she found in Colin Moore of Glasgow an owner prepared to give her what she needed. Between 2003 and 2007 she had her structure systems and accommodation significantly upgraded, followed by summers cruising the west coast of Scotland.

In 2013 DOLPHIN OF RHU experienced a dramatic change of cruising horizons, when she was purchased by Tapio Leskela who cruised the Finnish Lakeland for four summers.

In 2018, back to DELFINO, she returned to Solent waters in the present

motor yacht RONDORAM, one of the popular production-built 'Kaag-Kruisers' by Jachtwerf Gebrs. Visch of Warmond, Netherlands.

Like RONDORAM, DELFINO was originally powered by twin Sutton Power 4-cylinder diesels, DELFINO's being 62 hp each. Many of Reg Freeman's designs were powered by Sutton diesels, suggesting a business/ agency connection.

The Lovatts owned DELFINO until 1978 when her home port moved to Lymington, Hampshire on purchase by Godfrey G. Palmer and Mr & Mrs Roger T. Thomas. At least part of her role at this time may have been as mothership to Godfrey Palmer's 1974 Clare Lallow-built X One Design day racing sloop OYSTER.

ownership of a fastidious classic motor yacht enthusiast who has undertaken the incremental upgrades listed above, including the addition of a sheltered wheelhouse over the upper steering position.

©2025 Iain McAllister/ Sandeman Yacht Company Ltd.

Specification

CONSTRUCTION

- Traditional carvel built hull
- Pitch pine planking on oak frames
- Copper fastened
- Traditional teak laid deck
- Iroko and teak superstructures

Specification

DECK LAYOUT, EQUIPMENT AND GROUND TACKLE

GENERAL

- Teak laid deck; varnished king plank and covering boards
- Varnished teak substantial bulwarks and rail
- Stainless steel stanchions; partly iroko capped
- Stem and transom edges protected with stainless steel strip (2019)

FROM AFT

AFT DECK

- Bronze open fairleads at taffrail port and starboard
- Bronze closed cap rail fairleads port and starboard
- Fixed Stainless steel/ teak transom boarding/ berthing ladder transom (2018)
- Bronze mushroom vent
- Wood Samson posts port and starboard on deck
- Flush varnished/ teak laid hatch to steering flat/ lazarette
- 2 x Stainless steel davits with 2 x Lewmar 14 self-tailing winches (2007)
- 1 x Stainless steel outboard motor hoist (2007)
- Outboard motor stowage bracket (2019)
- Liferaft stowage at starboard quarter (2019)

AFT TRUNK CABIN

- Iroko uprights
- Laid teak on plywood roof
- Vanished teak margins and king plank
- Stainless steel and raw teak steps aft
- (Steps can also be used for boarding midships)
- 2 x Varnished Dorade boxes with chromed cowls (2021)
- Raised hatch over aft cabin (2020)
- 2 x Circular dioptric deck lights (2019)
- Burgee mast with spreaders and gaff (2019)
- Steaming and anchor lights; radar reflector (2019)

WHEELHOUSE (2019)

- 2 x Hinged entrance doors aft

- 1 x Hinged entrance door to port; easy access to helm
- Windscreen wipers (2019)
- Searchlight
- Horn (2019)

SIDE DECKS

- Wide, well scuppered side decks
- 2 x Panama fairleads port and starboard
- Incorporated cleats

DECKHOUSE

- Iroko uprights
- Laid teak on plywood roof
- Varnished teak grab rails port and starboard
- 2 x Varnished Dorade boxes with chromed cowls (2019)
- 2 x Wood handled boat hooks in teak chocks (2019)
- Large windows all round
- Windscreen wipers (2019)
- Trunk cabin forward over galley and WC
- 2 x Half skylights (non-opening)
- 2 x Bronze mushroom vents

FOREDECK

- Teak and holly booby forehatch
- Sliding hatch; 2 x bronze opening portlights
- Circular dioptric deck lights over forecabin port & starboard (2019)
- Varnished and raw teak stowage boxes port and starboard
- Chocks for Danforth spare anchor
- Varnished Dorade box with chromed cowl
- Samson post
- Bronze mushroom vent
- 2 x Stainless steel Panama fairleads
- 2 x Bow rollers
- Stainless steel pulpit

GROUND TACKLE

- Hydraulic windlass; horizontal chain gipsy and warping drum
- (Windlass fully refurbished 2007)

- Galvanised Bruce bower anchor
 - 70 m x 12 mm chain and warp
 - 55 lb/ 25 kg Galvanised Danforth spare anchor
 - Deckwash
-

Specification

ACCOMMODATION AND DOMESTIC EQUIPMENT

The accommodation is arranged for four people with the option of an additional two in the saloon

- Traditional hardwood slatted lining throughout cabins, forward head and galley
- Bridge of Weir burgundy leather upholstery (2007)
- Eberspächer heating system with outlets to all cabins, heads and saloon (2013)

WHEELHOUSE

- 2 x Hinged entrance doors aft
- 1 x Hinged entrance door to port; easy access to helm
- Seating port and starboard with blue Connolly leather cushions
- Locker box under port seat
- Locker in sole holding gas bottles vented outboard and tool storage
- Helm position to port
- Traditional ship's wheel with control knob
- Stainless steel Morse controls
- Perkins engine panels
- Instruments incl. chart plotter, autohelm, rudder reference, fire alarm
- Silva steering compass
- Flag locker
- Chart space to starboard and forward of helm

DOWN 2 x STEPS TO MAIN SALOON

- Completely re-fitted 2007
- 3 x Large windows port and starboard; 2 x forward
- (3 x 'Railway carriage' vertical sliding opening panes)
- Panoramic view
- Concertina window blinds (2019)
- U-shaped seating to port
- Drop leaf saloon table offset to port (2019)
- Drinks locker to starboard; bookshelves above (2019)
- Long settee to starboard
- Leecloths (2019)
- 2 x Deckhead lights
- 5 x Bulkhead lights

LOWER HELM POSITION TO PORT

- Ship's electrical isolator panel to port
- Traditional ship's wheel
- Stainless steel Morse controls
- Perkins engine panels
- 3 x Bilge pump switches (fwd. engine room and aft)
- Instruments incl. chart plotter, autohelm

- VHF Radio and handheld
- Alpine car radio with MP3 linked to Bose speakers
- Locker under
- Chartwork sideboard to starboard

DOWN 4 x STEPS TO FORWARD ACCOMMODATION

- Bookshelves to starboard

GALLEY TO PORT

- Completely re-fitted 2007 with subsequent upgrades
- Corian worktops
- Aqua Marine Neptune 4500 2 x burner hob + oven (2019)
- Top loading fridge (2007)
- Stainless steel sink
- Mixer tap
- Food lockers
- Glass and cup holders (2019)
- Bronze opening port
- Half skylight in deckhead (non-opening)
- Strip light central in deckhead (2019)

WC COMPARTMENT TO STARBOARD

- Jabsco electric toilet (2019)
- Bronze opening port
- Deckhead light
- Half butterfly skylight hatch in deckhead

FORWARD CABIN

- 2 x Single berths
- Clothes lockers under
- 4 x Bronze opening ports
- 2 x Bulkhead lights
- 1 x Deckhead light
- 2 x Dioptic glass decklights (2019)
- Booby hatch in deckhead; steps at port aft bulkhead

AFT ACCOMMODATION DOWN STAIR OFF SALOON STARBOARD AFT

OWNER'S EN-SUITE WC COMPARTMENT

- Jabsco electric toilet (2019)
- Stainless steel sink bowl (2007)
- Mixer tap
- Shower (2007)
- Teak grating sole; sump under
- Lockers
- 1 x Bronze opening port
- 1 x Dioptic glass decklights (2019)

OWNER'S EN-SUITE CABIN

- WC Compartment
- 2 x Generously sized single berths
- Clothes lockers and drawers
- Hanging locker
- Aft locker leads to escape hatch

- Hatch in deckhead (2019)
- 1 x Deckhead light
- 2 x Bulkhead lights
- 2 x Dioptic glass decklights (2019)
- 4 x Bronze opening ports

Specification

MECHANICAL, ELECTRICAL AND TANKAGE

MAIN ACCESS TO ENGINE ROOM IS VIA AFT CABIN

MECHANICAL

- 2 x Perkins Sabre 6-Cylinder M130 Diesels - Total 260 hp (2002/2007)
- Raw water cooled
- Engine hours c 1100
- Regular annual service by qualified marine engineers
- Updated alternators with shaft drives via PRM gear boxes
- Hydraulic power take offs
- Bronze/ stainless steel propeller shafts
- 4-Bladed propellers
- Engineered galvanised steel engine & transmission ladder frames
- All braided stainless steel fuel lines
- Double fuel filter system
- Sea water tell tale sight glasses & change over valves
- Morse "wireless" engine and gearbox controls - dual station
- Halyard Marine wet exhaust system
- Stainless steel catch trays under sumps
- Stainless steel hydraulic oil header tank

ELECTRICAL

- 240 V shore power circuit with outlets throughout
- Circuit breaker distribution system
- Built in 240 V – 24 V Smart charger (2020)
- 2 x Sunflower flexible solar panels (2022)
- 24 V circuit breaker distribution boards and system

- Outlets to the owner's cabin, saloon and lazarette
- 2 x Independent banks of engine start batteries (2019)
- 2 x Gel Cell 240 Ah in Domestic battery banks (2017)
- Adverc battery monitoring and smart charging system
- Led lighting throughout with new fittings in fore cabin/saloon/aft cabin (2019)

TANKAGE & WATER SYSTEMS

- Stainless steel water tanks:
- 1 x Main abaft engine bulkhead
- 2 x Wing tanks under side decks
- Fresh water capacity 375 L
- Stainless steel diesel tanks total capacity 1,350 L
- Diesel tanks and fuel cleaned in 2021
- Waste water collection system capacity 450 L (2013)
- Hot water cylinder: shore power immersion and indirect coil heating off port engine
- Water pressure accumulator
- Hot and cold pressurised water system

OTHER

- Eberspächer Airtronic D5L heating system (2013)
- Outlets to all cabins, WC compartment(s) and saloon
- Sea water deck wash with electric lift pump (2007)
- Gas pipe work tested and certified

Specification

NAVIGATION AND COMMUNICATIONS

NAVIGATION

- Raymarine eS 127 MFD plotter
- Navionics charts of UK (2018)
- Raymarine eS 75 MFD (2018)
- Raymarine Tridata Instruments
- Raymarine Echo Sounder
- Raymarine Autopilot
- Raymarine AIS 700 broadcast/receive (2018)
- Raymarine ST290 rudder reference display (2019)

- Fluxgate compass (2018)
- Set of charts for England west coast & Northern Ireland
- Clock and Barometer
- Binoculars

COMMUNICATIONS

- Icom IC-M601 DSC VHF Radio
- Handheld VHF Radio

Specification

SAFETY

- 8-Person Seago life raft (last serviced 2017)
- RORC Flare Pack (2021)
- Horn (2019)
- Hoisting radar reflector
- MOB Life buoy (2019)
- 6 x Bilge pumps (3 electric, 2 engine, 1 manual)
- 3 x 1 kg Powder fire extinguishers (2021)

- 1 x 4 kg Powder fire extinguisher (2021)
- Seafire manual/auto engine room fire extinguisher system (2021)
- Galley fire blanket
- Gas alarm and detector (2019)
- Emergency steering assembly (2007)

Specification

OTHER EQUIPMENT

- 2 m Stainless steel swim/ rescue ladder extension (2022)

- Highlander Arran 8 ft dinghy (2019)
- Various warps and 9 x large fenders

- Spare filters and pump spares

- Winter cover (2019)
-

Disclaimer

These particulars have been prepared from information provided by the vendors and are intended as a general guide. The purchaser should confirm details of concern to them by survey or engineers inspection. The purchaser should also ensure that the purchase contract properly reflects their concerns and specifies details on which they wish to rely.

REG FREEMAN-ATTRILL 40FT TWIN SCREW MOTOR YACHT 1966/2007

Specification
GALLERY














SANDEMAN
SPECIALIST IN CLASSIC & VINTAGE
YACHT COMPANY

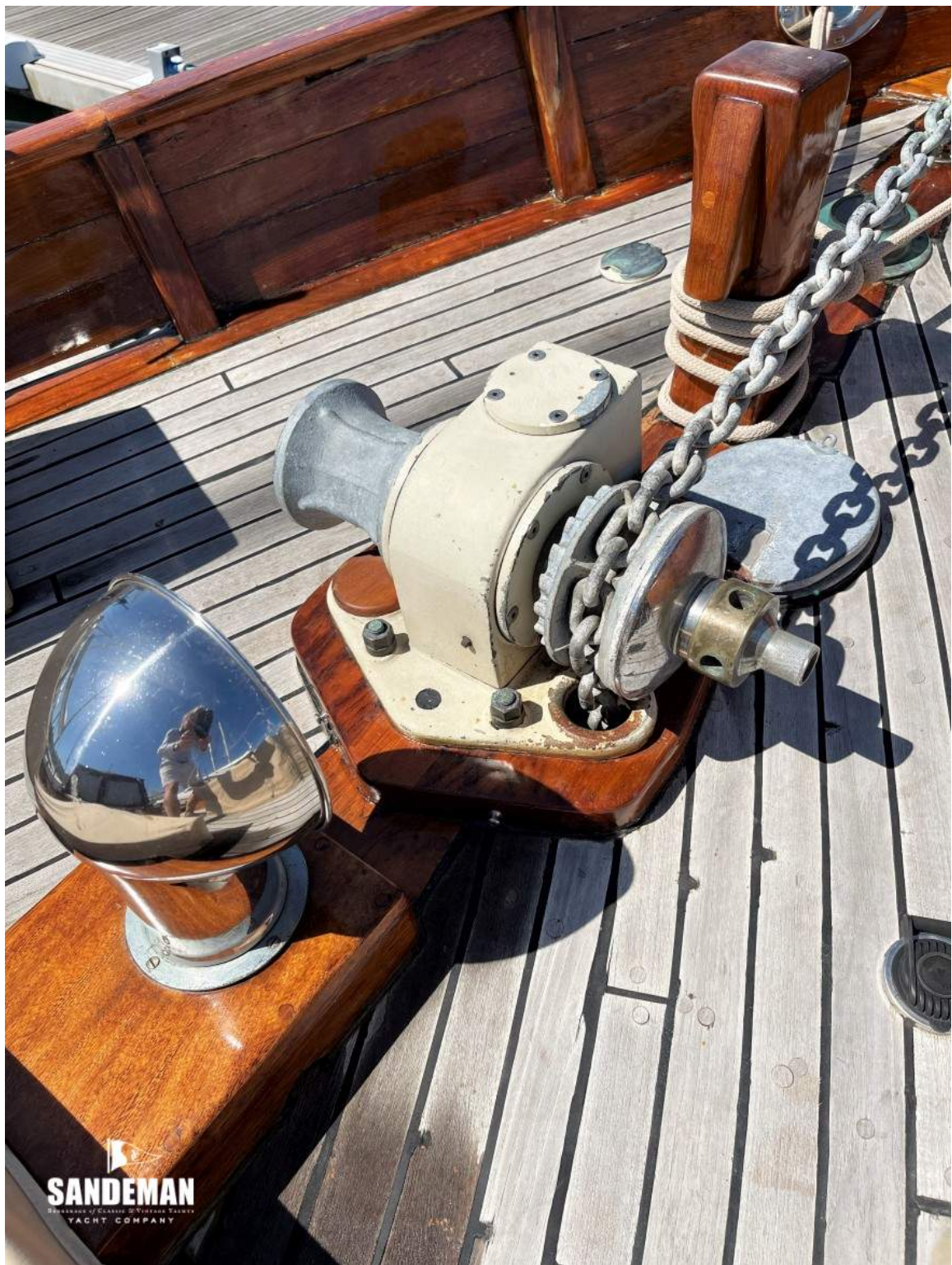








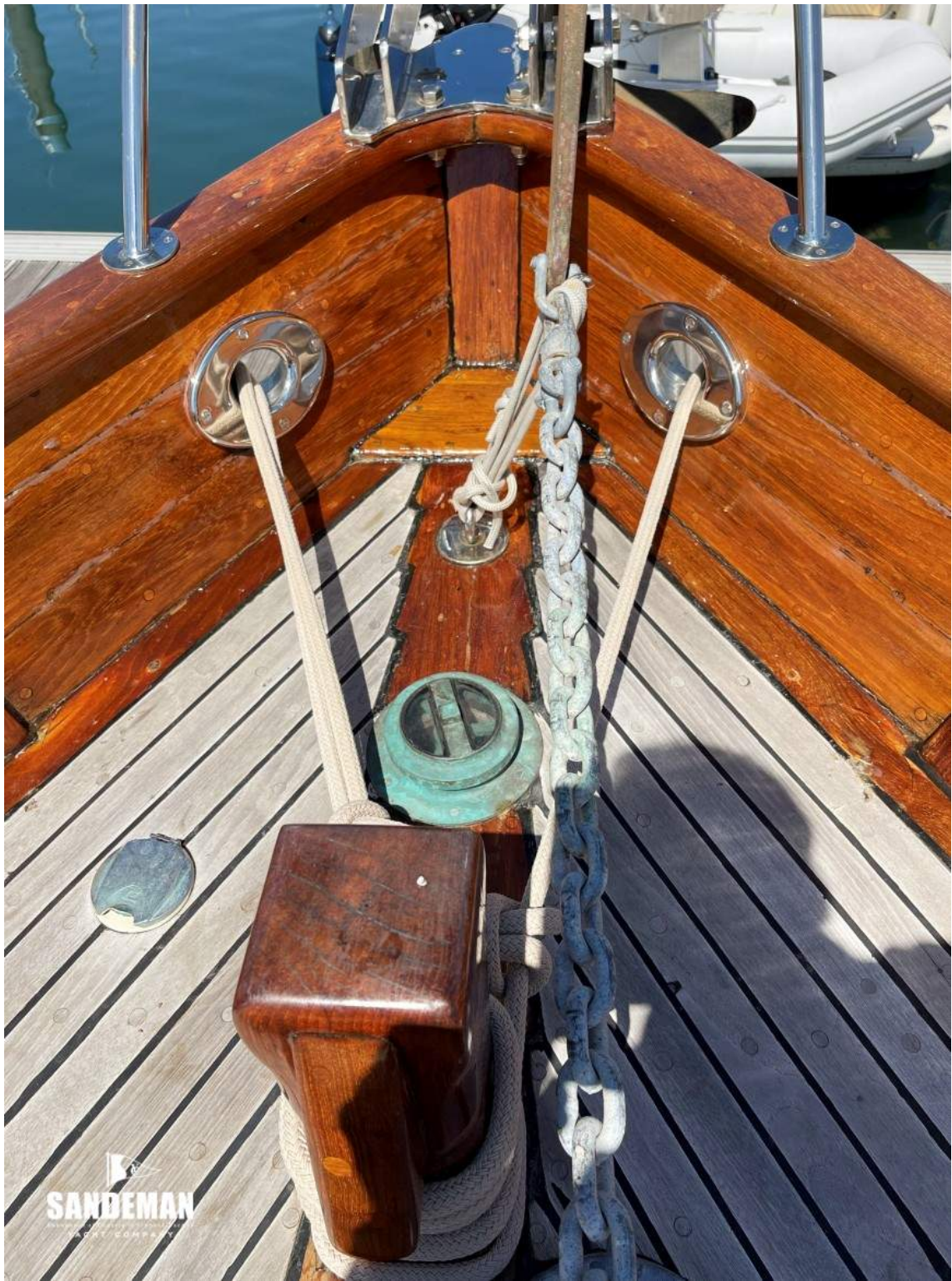


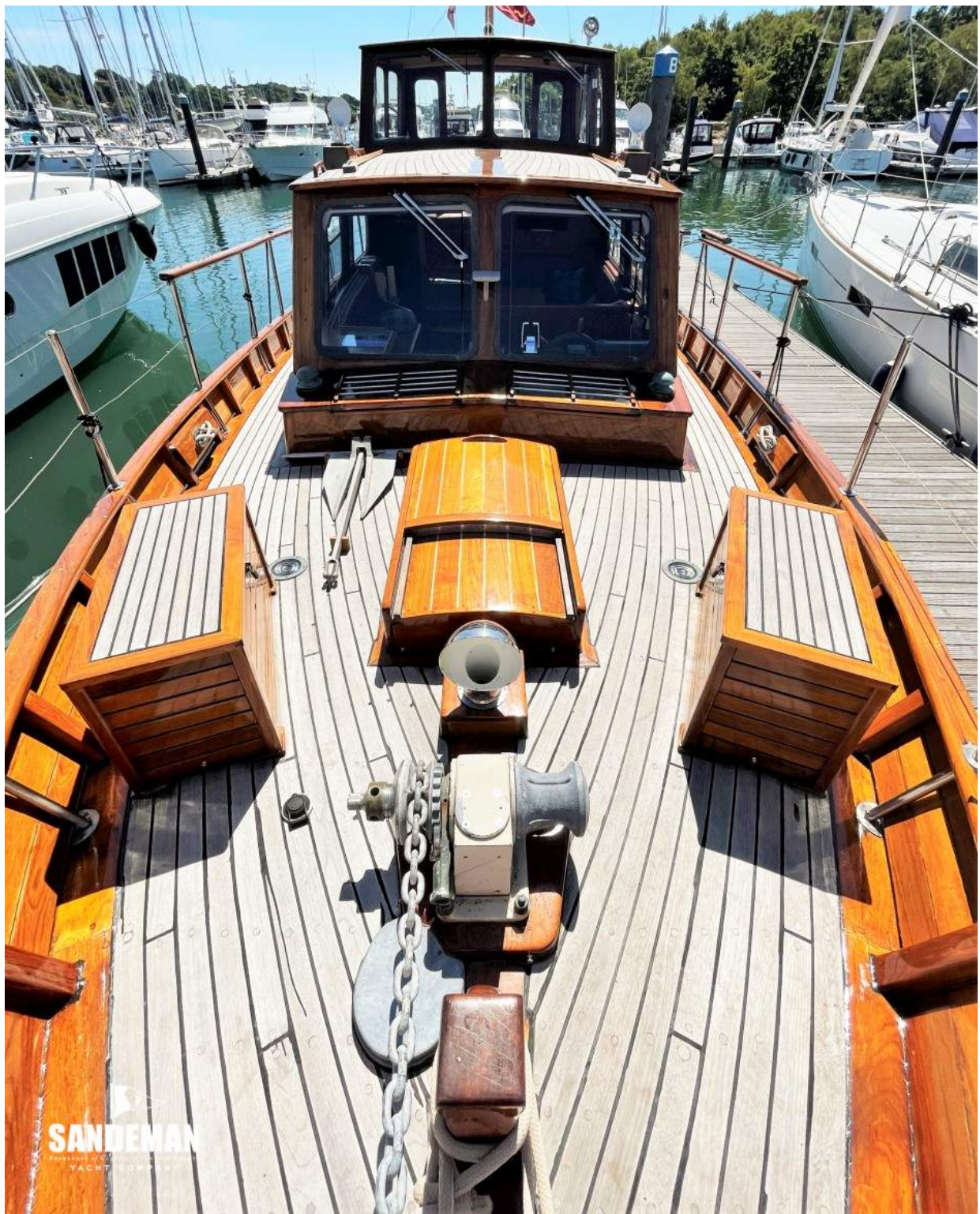



SANDEMAN
DESIGNER OF CLASSIC & MODERN YACHTS
YACHT COMPANY



SANDEMAN
SPECIALISTS IN CUSTOMER SERVICE
YACHT COMPANY



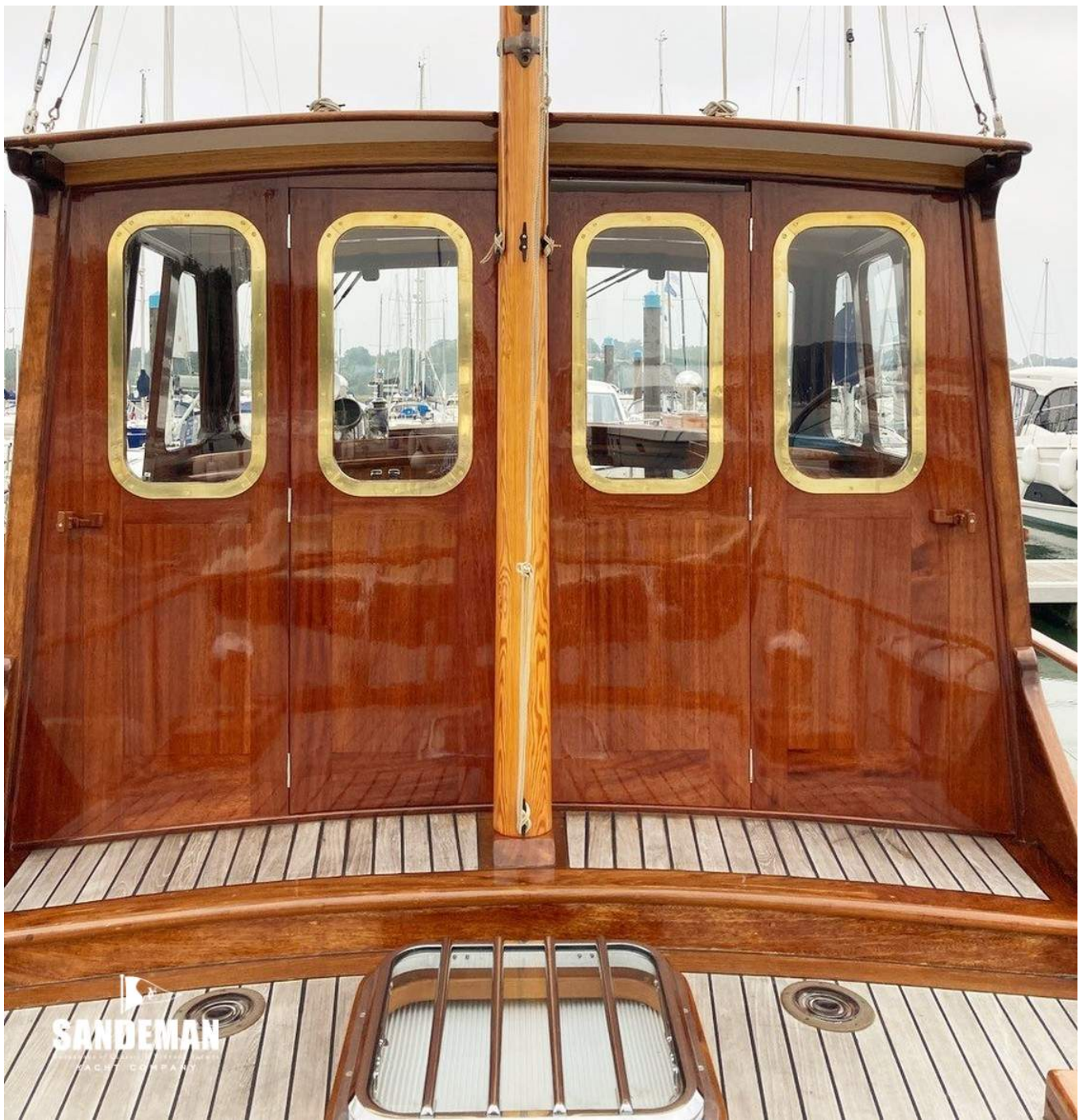




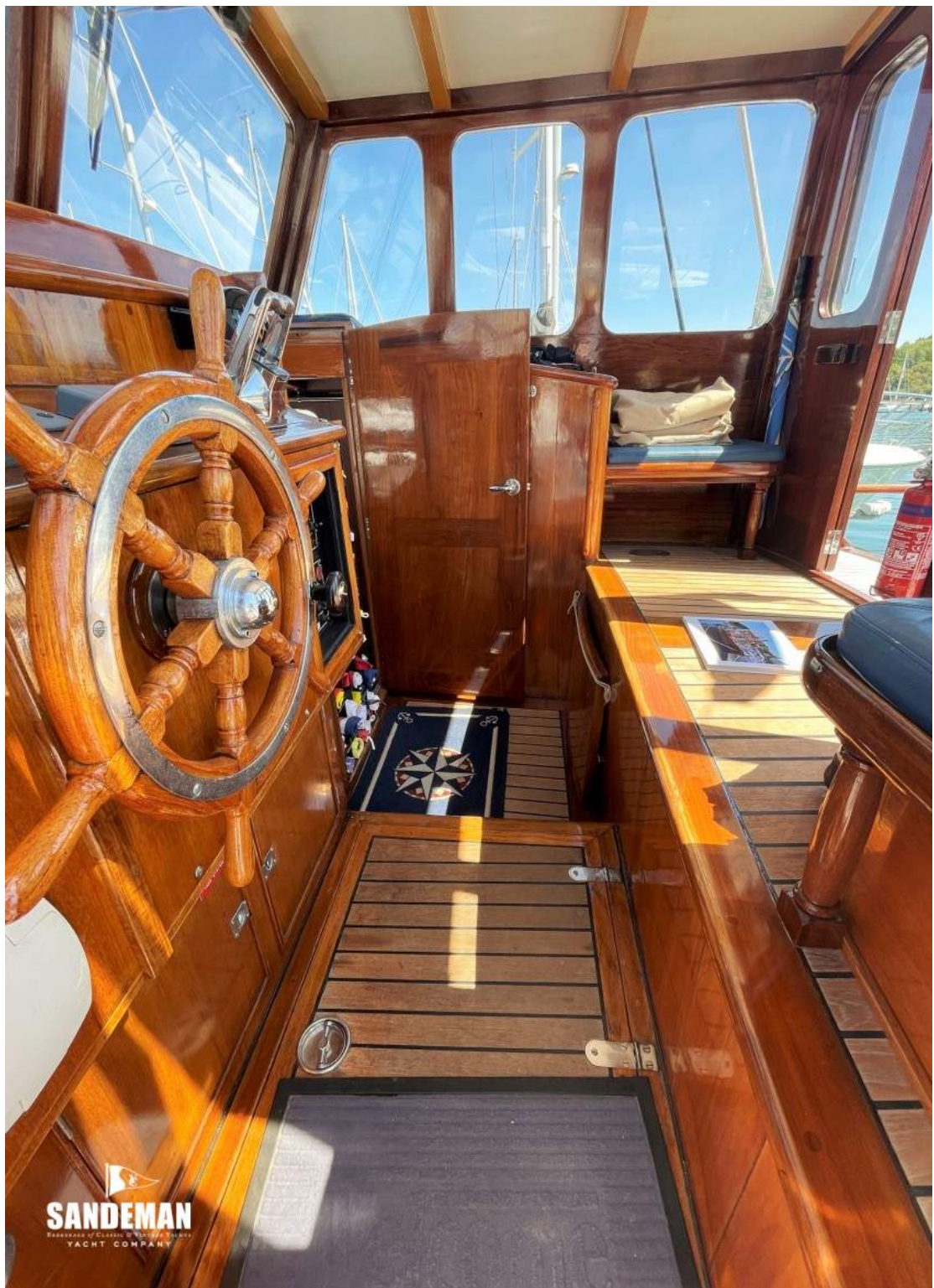













SANDEMAN
BOATSHIPS OF CLASSIC & MODERN YACHTS
YACHT COMPANY





SANDEMAN
BOOKERS OF CLASSIC & MODERN YACHTS
YACHT COMPANY





 **SANDEMAN**
SANDERSON YACHTS LTD. 1980
YACHT COMPANY






SANDEMAN
BOATSALES & CLASSIC & VINTAGE YACHTS
YACHT COMPANY



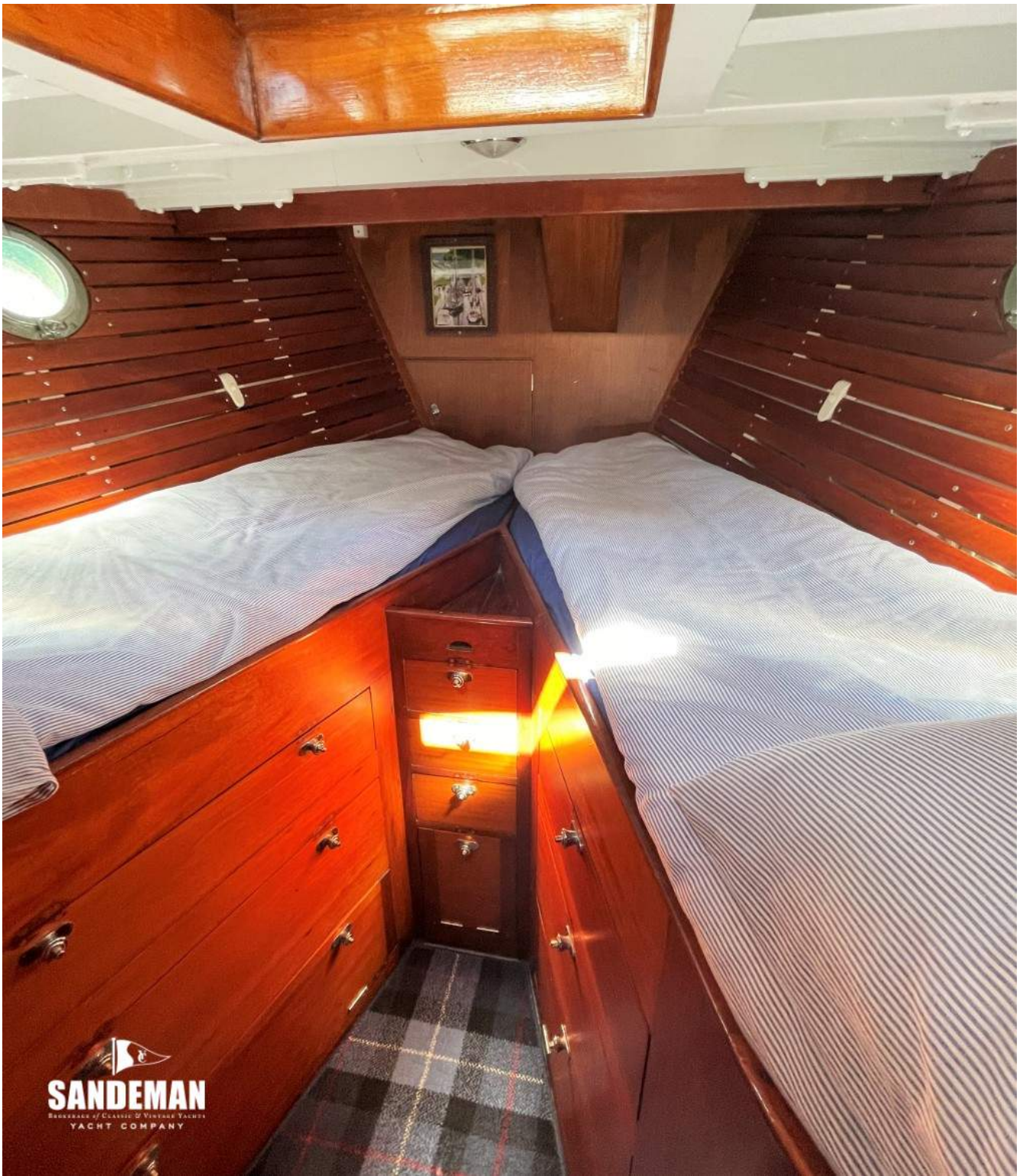





SANDEMAN
ESTABLISHED 1875
YACHT COMPANY








SANDEMAN
BROKERAGE OF CLASSIC & VINTAGE YACHTS
YACHT COMPANY






SANDEMAN
SANDERSON / CLINTON / TINKER YACHTS
YACHT COMPANY

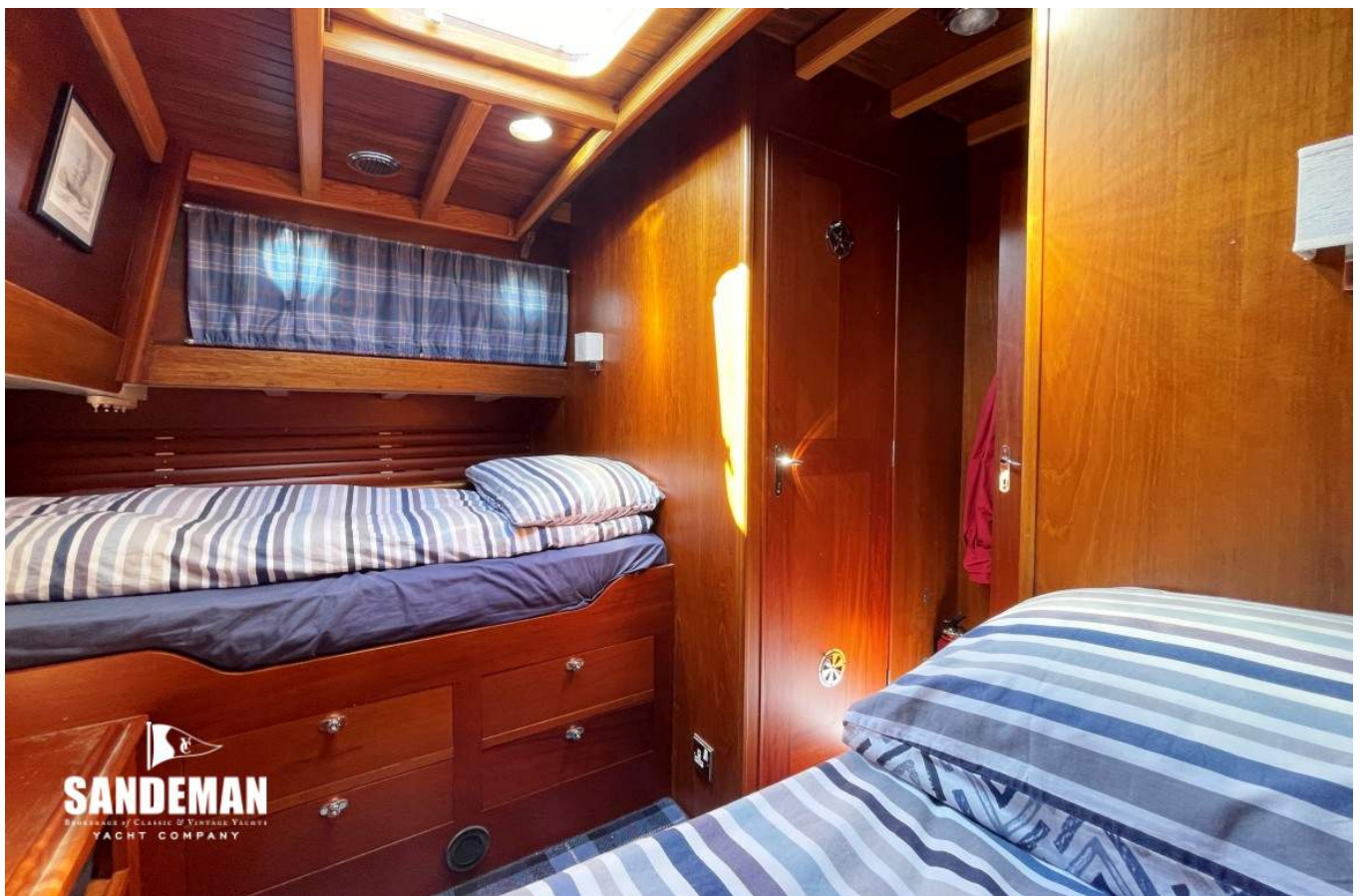







SANDEMAN
DEalers of Classic & Vintage Yachts
YACHT COMPANY










SANDEMAN
RENEWERS OF CLASSIC & VINTAGE YACHTS
YACHT COMPANY





