

VOORUIT/LANGENBERG 74 FT TWIN SCREW MOTOR YACHT 1965 - REFIT COMPLETION PROJECT



Specification

ALDORA

VOORUIT/LANGENBERG 74 FT TWIN SCREW MOTOR YACHT 1965 - REFIT COMPLETION PROJECT

Designer	HHC Baars/ International Ship Design Holland	Length waterline	61 ft 0 in / 18.59 m	Engine	2 x Gardner 6LXB 127 hp 6 cyl diesels
Builder	Scheepswerf Vooruit & Bootbouw Langenberg, Zaandam, Holland	Beam	18 ft 0 in / 5.49 m	Location	Spain
Date	1965	Draft	7 ft 3 in / 2.21 m		
Length overall	74 ft 0 in / 22.56 m	Displacement	80 Tonnes		
Length deck	74 ft 0 in / 22.56 m	Construction	Welded steel		

These details are provisional and may be amended

Specification

BROKER'S COMMENTS

ALDORA is a fine little ship that embodies everything good about the steel yacht design and construction heritage of Holland. Built under Lloyd's supervision, and under a sensible maintenance regime in present ownership since 2002, she packs a lot into her 74 feet: three double en-suite cabins and a generous single, with spacious covered and sheltered public areas. ALDORA has been laid up ashore in a secure Spanish yard for the past seven years during a Covid pandemic-interrupted refit in which the hull work was done and her systems properly hibernated. The sensible price tag allows for completion of the refit. We believe the boat should survey well structurally, allowing a new owner to add more exciting touches to make this boat ready for further family adventures.



• SANDEMAN YACHT COMPANY •  
• Brokerage Of Classic & Vintage  
Yachts •

[www.sandemanyachtcompany.co.uk](http://www.sandemanyachtcompany.co.uk)



## VOORUIT/LANGENBERG 74 FT TWIN SCREW MOTOR YACHT 1965 - REFIT COMPLETION PROJECT

### Specification

## HISTORY

INTERNATIONAL SHIP DESIGN HOLLAND DESIGN NO. 118-1

- BOOTBOUW LANGENBERG YARD NO. 1272

The promoter for a class of perhaps up to five yachts built in Zandaam, Holland, and by a Dutch-owned yard in Durban, South Africa, to this attractive design by Haarlem-based H.H.C. Baars/ International Ship Design Holland was highly experienced British motor yacht owner George Beaumont Butler (1918-1999), who allocated one to himself, and then another.

Scion of a highly successful Bristol coal tar distilling family, at only just 21-years-old Butler had become first owner of the stylish Camper & Nicholsons 88 ft motor yacht LAROC, commissioned at their Northam yard in September 1939 and immediately requisitioned by the Admiralty for the war effort – with RNVR officer Butler in command.

In May-June 1940 LAROC survived participation in Operation Dynamo at Dunkirk, and Butler was Mentioned in Despatches. It must have been hard to leave LAROC on becoming posted to the command of other armed yachts and trawlers for the remainder of the Second World War, but Butler got her back briefly post-war before moving on to IDALIA (103 ft, Harland & Wolff 1934) and LADY ALICIA (65 ft, Saunders-Roe, 1936).

The 1964 build contract for Bootbouw Langenberg Yard No. 1272 (launched as GENINE) was between Butler, the yard, and her first owner, Hove, Sussex financier/ property developer Henry Pearlberg. But where does Sheepswarf Vooruit fit in to this story? Well, it seems that apart from the boat built in South Africa, and a slightly later second build for Butler, the Vooruit yard completed the Langenburg-built hulls. Everything to a high standard and using the best quality build standards and materials, the whole to Lloyd's ✠100A1 & ✠LMC.

After Pearlberg's first season listed by Lloyd's Register of Yachts as owner, GENINE became entity owned until title transferred in 1967 to Gerald Abrahams. His family owned the Aquascutum fashion brand, with Gerald as Managing Director and figurehead. Gerard and his wife, leading Broadway and West End theatre producer Doris Cole Abrams, between them had fans and associates such as Cary Grant, Sean Connery, Richard Burton and Laurence Olivier. ALDORA was home berthed at Nice in their ownership; one can only imagine the parties – for which Doris was famous.

Annecy, France tower crane designer and entrepreneur Pierre Pignon became ALDORA's third owner from 1974. A brief period, still in his ownership, renamed PHOEBUS III preceded return to entity ownership from 1977 as ALDORA again, after which the ownership trail is harder to follow. ALDORA has been in the loving current ownership of an English family since 2002, enjoying the sensible regime of refits detailed above. During the 2007 refit at Plymouth, UK, the accommodation was altered to the present layout. Until the most recent refit commenced in 2017, she has been cruising the Mediterranean from a Spanish base.

©2025 Iain McAllister/ Sandeman Yacht Company Ltd.

### Specification

## REFITS

2022 - CARTAGENA, SPAIN - MAJOR REFIT (UNFINISHED)

- Hull shot-blasted and fully sealed with epoxy resin
- Ultrasound readings taken
- Any worn plates were replaced

2015 - CARTAGENA, SPAIN

- New propeller shafts and propellers
- New shaft seals and cutlass bearings, rope cutters

2003-2007 - PLYMOUTH UK - MAJOR REFIT

- Whole of interior and exterior redesigned
- All woodwork replaced under direction of owner and captain
- Complete re-wiring and re-plumbing
- Installation of pasarelle, crane and new electronics

2003 - CARTEGENA, SPAIN

- Some hull plating
- 2 x New generators fitted
- Bow and stern thrusters fitted

### Specification

## CONSTRUCTION

- Traditional welded steel hull and superstructure
- Originally

built to Lloyd's ✠100A1 & ✠LMC; in class until 1983

### Specification

## DECK LAYOUT, EQUIPMENT, AND GROUND TACKLE

### SUMMARY

- Faux teak laid deck covering over steel
- High, teak rail capped bulwarks
- Teak vertical lining to inner top half of bulwarks

### AFT DECK

- Opacmare hydraulic passerelle (2007)
- Deck boxes/ seats to port & starboard
- Electric mooring winch to starboard
- Flush hatch to lazarette/ steering flat
- Panama mooring fairleads port & starboard
- Stainless steel mooring bollards port & starboard
- 10-Seat dining table
- Drinks and wine fridge

### TOP DECK

- Access via steps from aft saloon bulkhead
- Aft to U-seating around 10-seat dining table
- Napoleon BBQ
- Forward to boat deck
- Opacmare long reach crane
- Sunbathing area

- Sun canopies

### WIDE SIDE DECKS

- Chromed deck lights (8 x port; 4 x starboard)
- Bulwark boarding gates port & starboard
- Spring lines bollards in bulwark apertures port & starboard
- Inset steps in port superstructure to wheelhouse door
- Door starboard forward to passage and steps down to lower deck

### FOREDECK

- 2 x Large warp lockers at forward superstructure
- Mooring bollards port & starboard
- Panama fairleads port & starboard

### GROUND TACKLE

- 2 x Stockless anchors stowed in hawsepipes at port and starboard bow
- Hydraulic anchor windlass w. 2 x horizontal chain gipsies
- Raised steel hatch to chain locker

### Specification

## ACCOMMODATION AND DOMESTIC EQUIPMENT

- 3 x Double en-suite cabins (incl. owner cabin aft)
- 2 x Single guest/ crew cabins
- 2 x Crew berths in forepeak

### MAIN DECK:

- Saloon entry from aft deck and from starboard passage
- 2 x Large chromed opening ports aft
- L-Seating to port with 8- seat dining table
- Settee to starboard
- Desk at aft bulkhead
- Lockers
- Drinks lockers
- Book cases
- 3 x Bulkhead lights
- Multiple spotlights in deckhead
- 4 x Opening ports

### PASSAGEWAY FORWARD TO STARBOARD

- Bulkhead lights
- 2 x Opening ports
- Door to starboard side deck
- Turned stair down to lower deck accommodation

### GUEST 'DAY HEAD' COMPARTMENT TO PORT

- Tecma electric toilet
- Hand basin with hot and cold taps

### 5 x STEPS UP TO WHEELHOUSE

- Engine room access in sole
- Helm seat
- Kent screen to port
- Traditional ship's wheel with metal rim
- Gardner engine controls
- Autopilot controls
- Navigation displays

- Bath and shower
  - Tecma electric toilet
  - Heated towel rail
  - Basin with hot and cold taps
  - Lockers
  - 2 x Opening ports
  - Spotlights in deckhead
- ### LOWER DECK FORWARD
- Stair down from passage forward
- 1 x Opening port

### AFT TO PORT AND STARBOARD DOUBLE EN-SUITE GUEST CABINS

#### Port

- Large double berth
  - Generous stowage under
  - Shelf and bulkhead mounted TV
  - 2 x Opening ports
  - 2 x Bulkhead lights
  - Spotlights in deckhead
- #### En-suite
- Walk in shower
  - Basin with hot and cold taps
  - Tecma electric toilet
  - Heated towel rail
  - 1 x Opening port
  - Spotlights in deckhead

#### Starboard

- Large double berth
- Generous stowage under
- Lockers under
- Shelf and bulkhead mounted TV
- 2 x Opening ports
- 2 x Bulkhead lights
- Spotlights in deckhead

#### Systems displays

- Door to port; down steps to main deck
- Seating to port
- Lockers and bookshelves
- Large chart lockers
- Multiple spotlights in deckhead

#### GALLEY

- Samsung American style fridge freezer with inverter
- Bosch dishwasher
- Bosch 5 ring gas hob
- Bosch oven
- Microwave oven
- Hotpoint Washer and Hotpoint drier
- 2 x Stainless steel sinks with 1 x drainer and mixer tap
- Plates, pots and food lockers
- 2 x Opening ports
- Multiple spotlights in deckhead

#### LOWER DECK AFT

Wheeled stair down from saloon aft starboard

- Owners cabin with en-suite
  - Very large double berth
  - Lockers under
  - Hanging locker
  - TV and stereo
  - Vanity table
  - 4 x Opening ports
  - Spotlights in deckhead
- En-suite forward to port

#### En-suite

- Walk in shower
- Basin with hot and cold taps
- Tecma electric toilet
- Heated towel rail
- 1 x Opening port
- Spotlights in deckhead

#### FORWARD

##### WALK IN SHOWER ROOM TO PORT

- Basin with hot and cold taps
- Heated towel rail
- Spotlights in deckhead

##### WC COMPARTMENT TO STARBOARD

- Basin with hot and cold taps
- Tecma electric toilet
- 1 x Opening port
- Spotlights in deckhead

##### SINGLE GUEST CABIN TO PORT

- Large single berth
- Generous stowage under
- TV and stereo
- 3 x Opening ports
- Spotlights in deckhead

##### WHEELED STAIR TO STARBOARD

##### CAPTAIN'S CABIN TO STARBOARD

- Single berth
- Generous stowage under

##### HATCH TO FOREDECK

##### FO'C'SLE

- V-Berths
- Generous stowage under
- Spotlights in deckhead

##### ENTERTAINMENT

- Bose sound system
- TV with electronic lift
- Satellite TV dome KVH Trackvision M7 linear with autoskew

---

#### Specification

### MECHANICAL, ELECTRICAL, AND TANKAGE

#### MECHANICAL & PROPULSION

- 2 x Gardner 6LXB 127 hp 6 cyl diesels
- Fresh water cooled
- 2:1 Reduction gears
- Shafts and propellers new 2015
- Bow and stern Sidepower 24 V electric thrusters (2003)

#### MECHANICAL/ ELECTRICAL

- Kohler Generator 13 kW
- Kohler Generator 27 kW

#### ELECTRICAL

- Independent battery chargers for thrusters

#### TANKAGE AND ASSOCIATED

- Fuel: 11,800 L / 2596 Gal
- Range c.4,200 nautical miles
- Water: 5,400 L / 1188 Gal
- 12 V / 220 V Convertible freshwater pumps

#### OTHER

- Condaria Air conditioner
- Descalator Water maker; 90 L/ hr

---

#### Specification

### NAVIGATION AND COMMUNICATIONS

NAVIGATION

- Furuno Navnet system
- GPS/ Plotter/ Radar
- Autopilot

COMMUNICATIONS

- Furuno VHF Radio
- 3 x Icom M33 Walkie Talkies

Specification

SAFETY

- Zodiac life raft
- Engine room CM200
- foam based fire extinguishing system

Specification

OTHER EQUIPMENT

- Williams Turbojet 445 5 x seat tender (2014)
- Diving gear for 2 people
- Starboard midships stainless steel/teak boarding ladder
- Napoleon BBQ
- Folding chairs

Disclaimer

These particulars have been prepared from information provided by the vendors and are intended as a general guide. The purchaser should confirm details of concern to them by survey or engineers inspection. The purchaser should also ensure that the purchase contract properly reflects their concerns and specifies details on which they wish to rely.

VOORUIT/LANGENBERG 74 FT TWIN SCREW MOTOR YACHT 1965 - REFIT COMPLETION PROJECT

---

Specification  
GALLERY





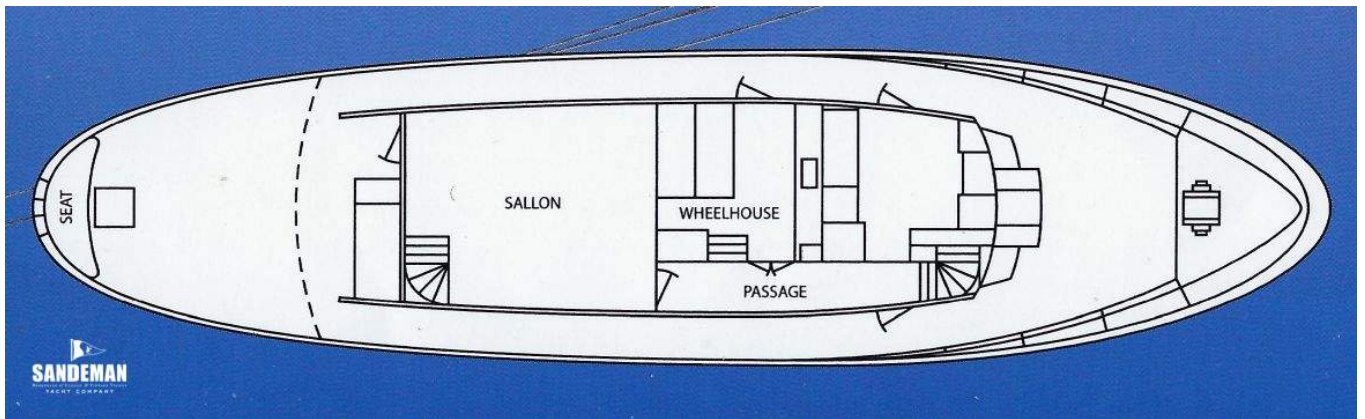


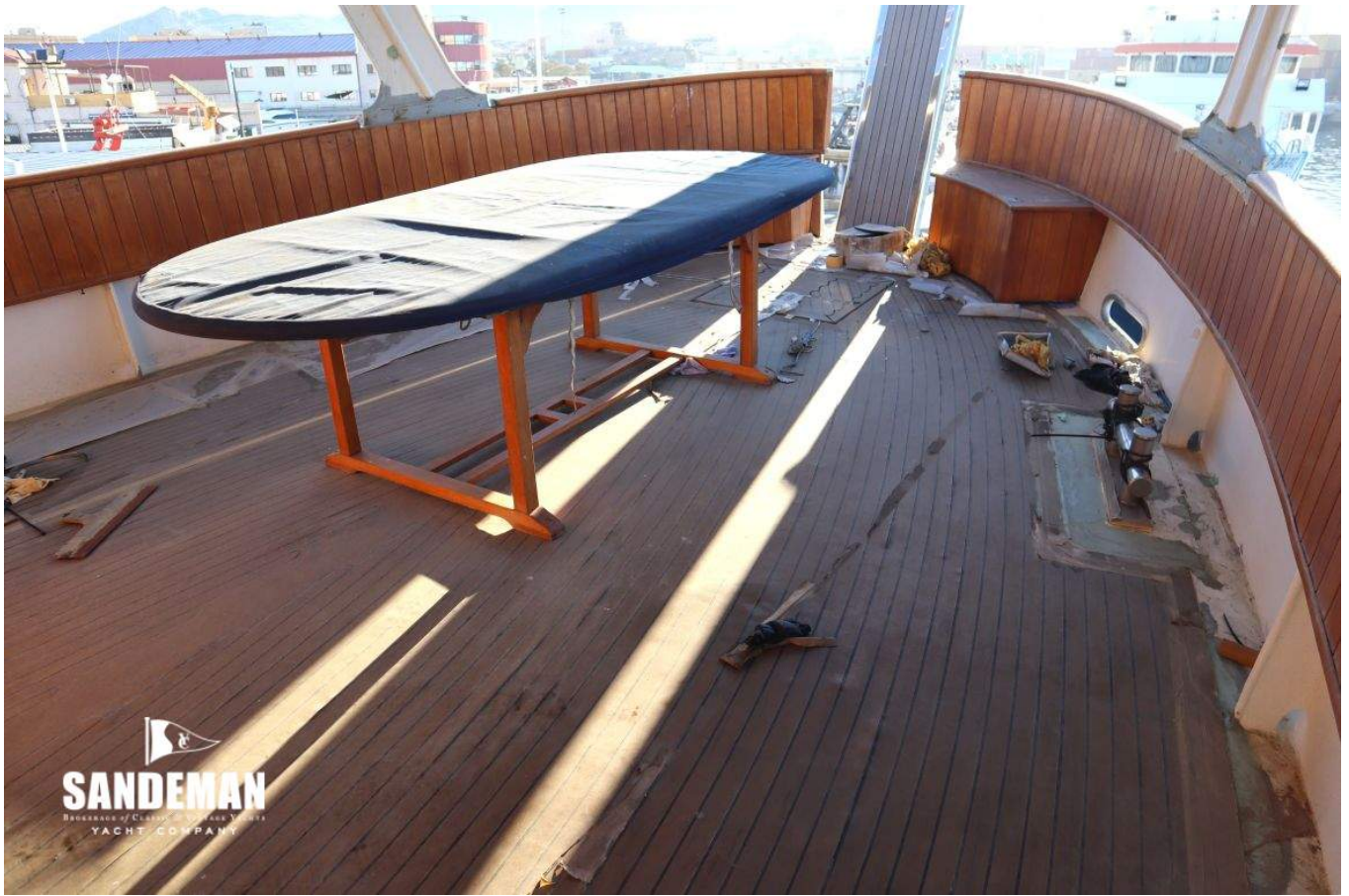




  
**SANDEMAN**  
MANAGERS OF CLASSIC & YACHTING TRAVEL  
YACHT COMPANY











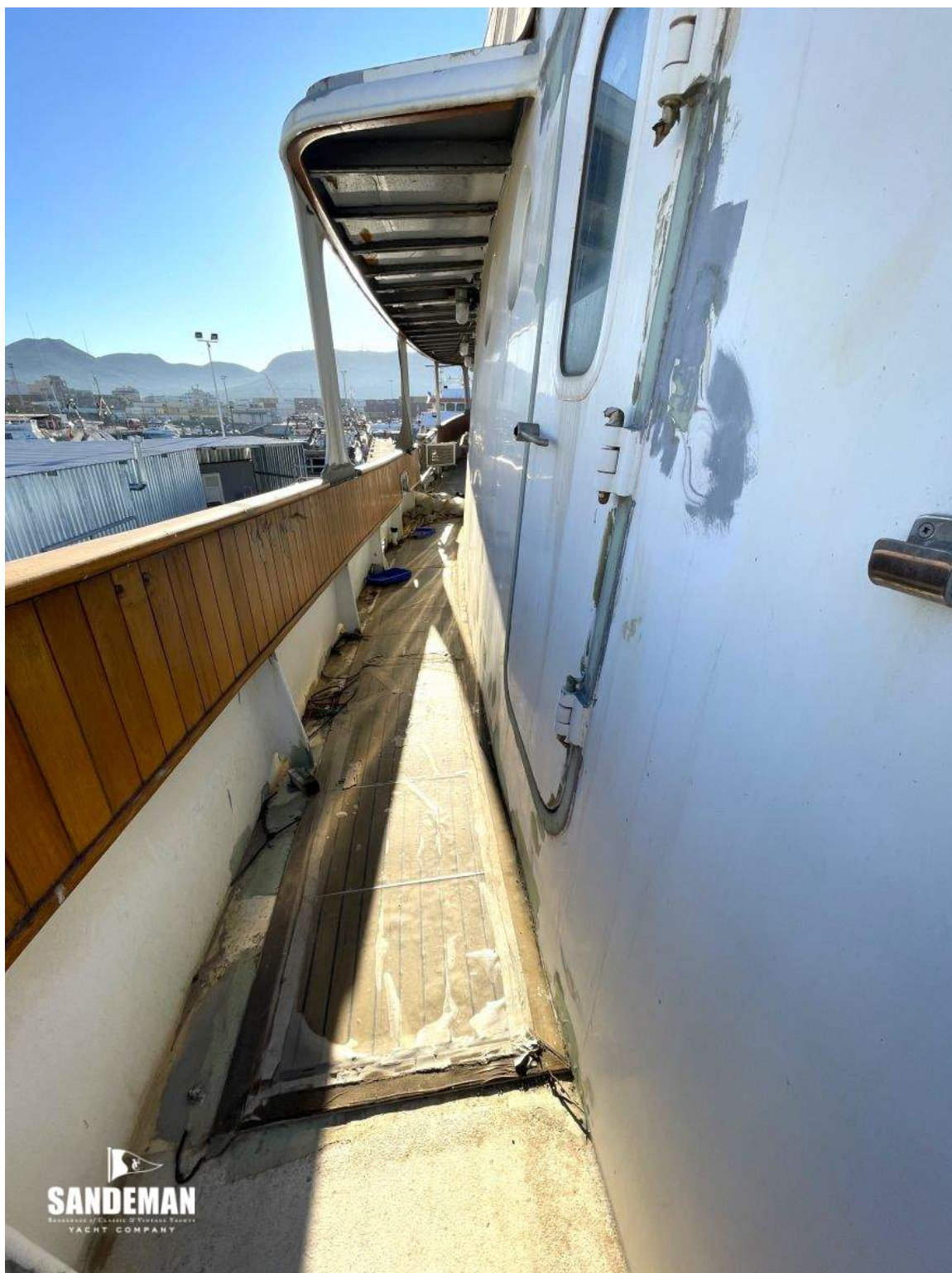
  
**SANDEMAN**  
A DIVISION OF CANTIERO D'EUROPA YACHTS  
YACHT COMPANY







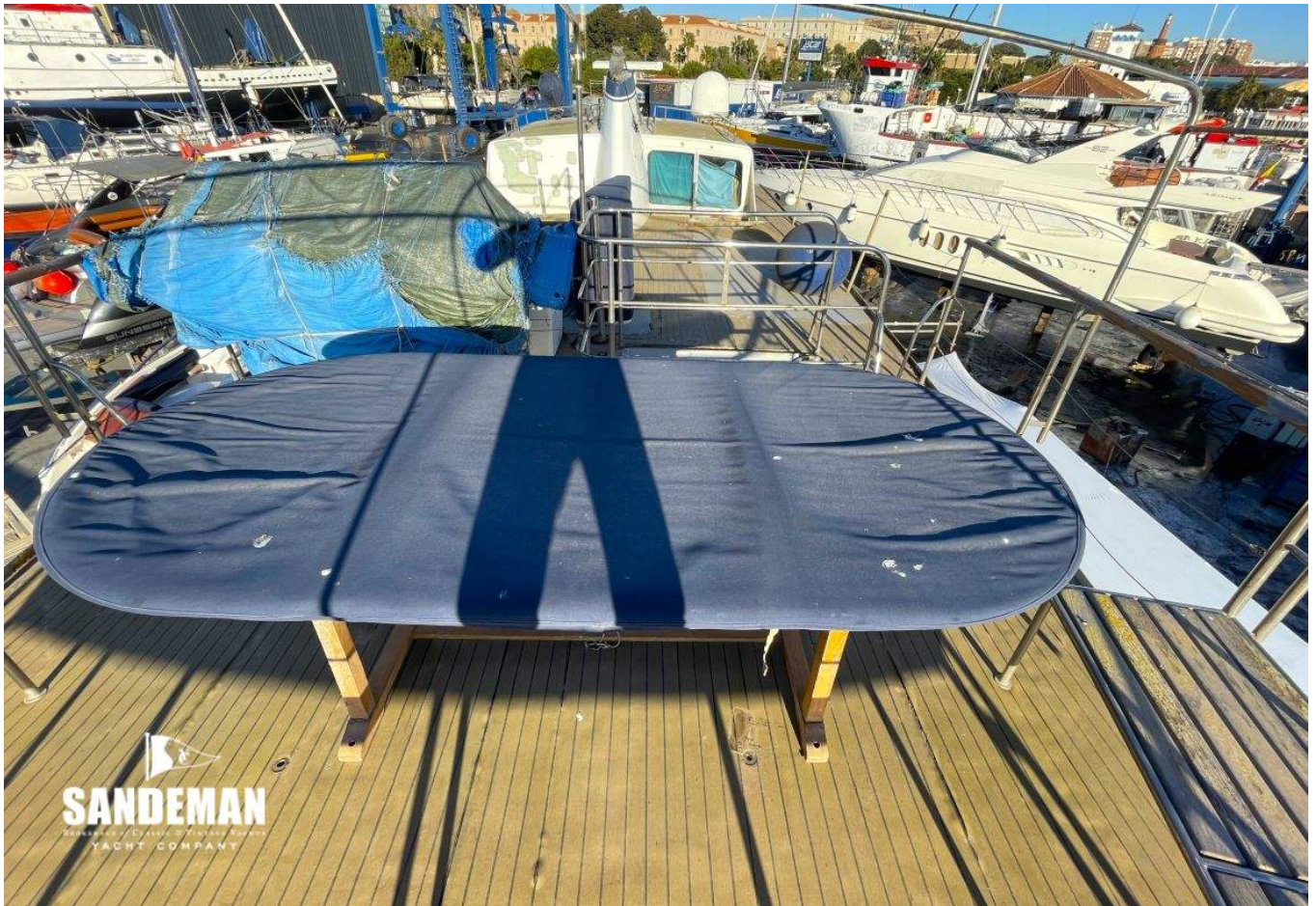
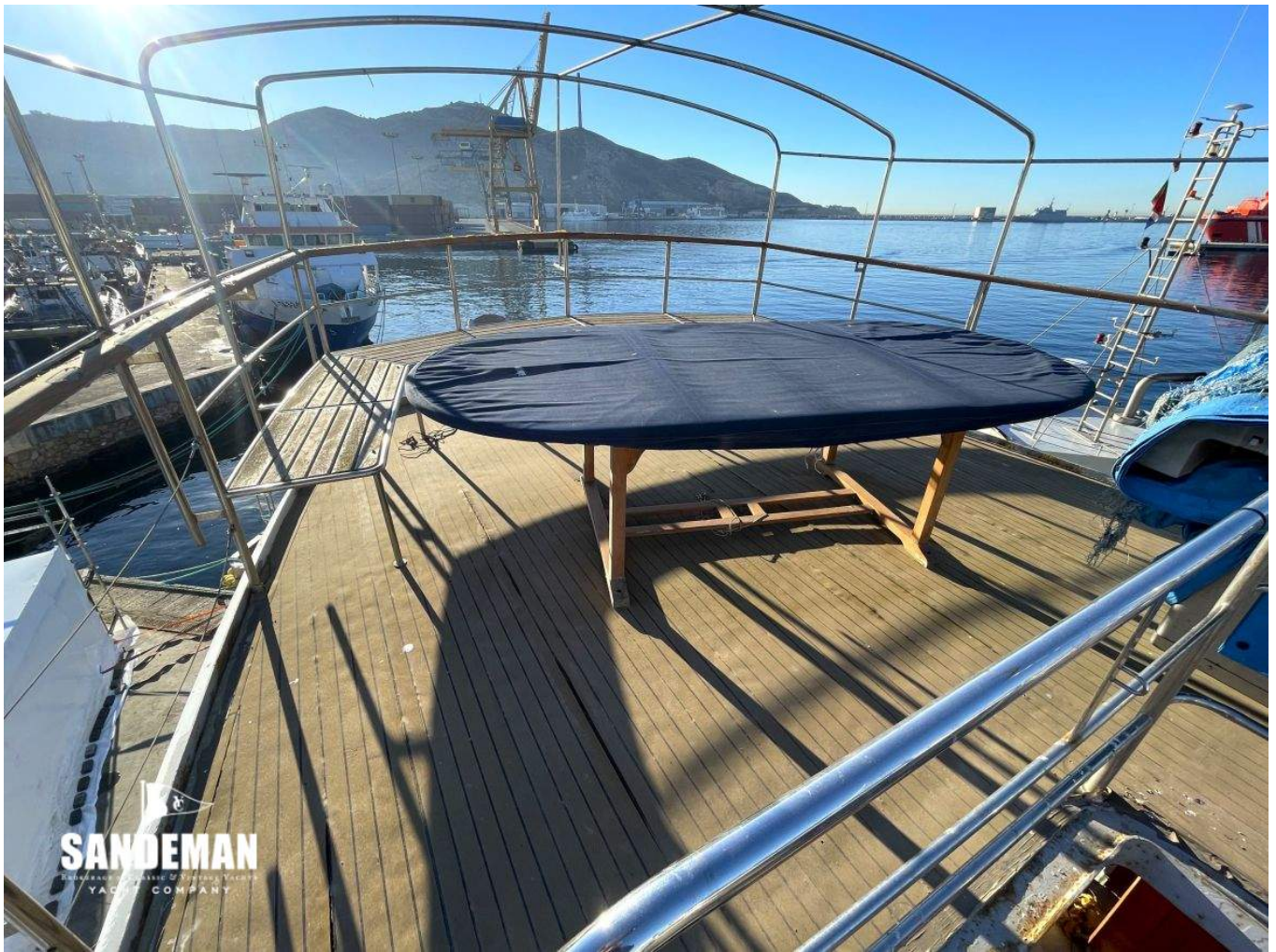
  
**SANDEMAN**  
Restoration of Classic & Vintage Yachts  
YACHT COMPANY







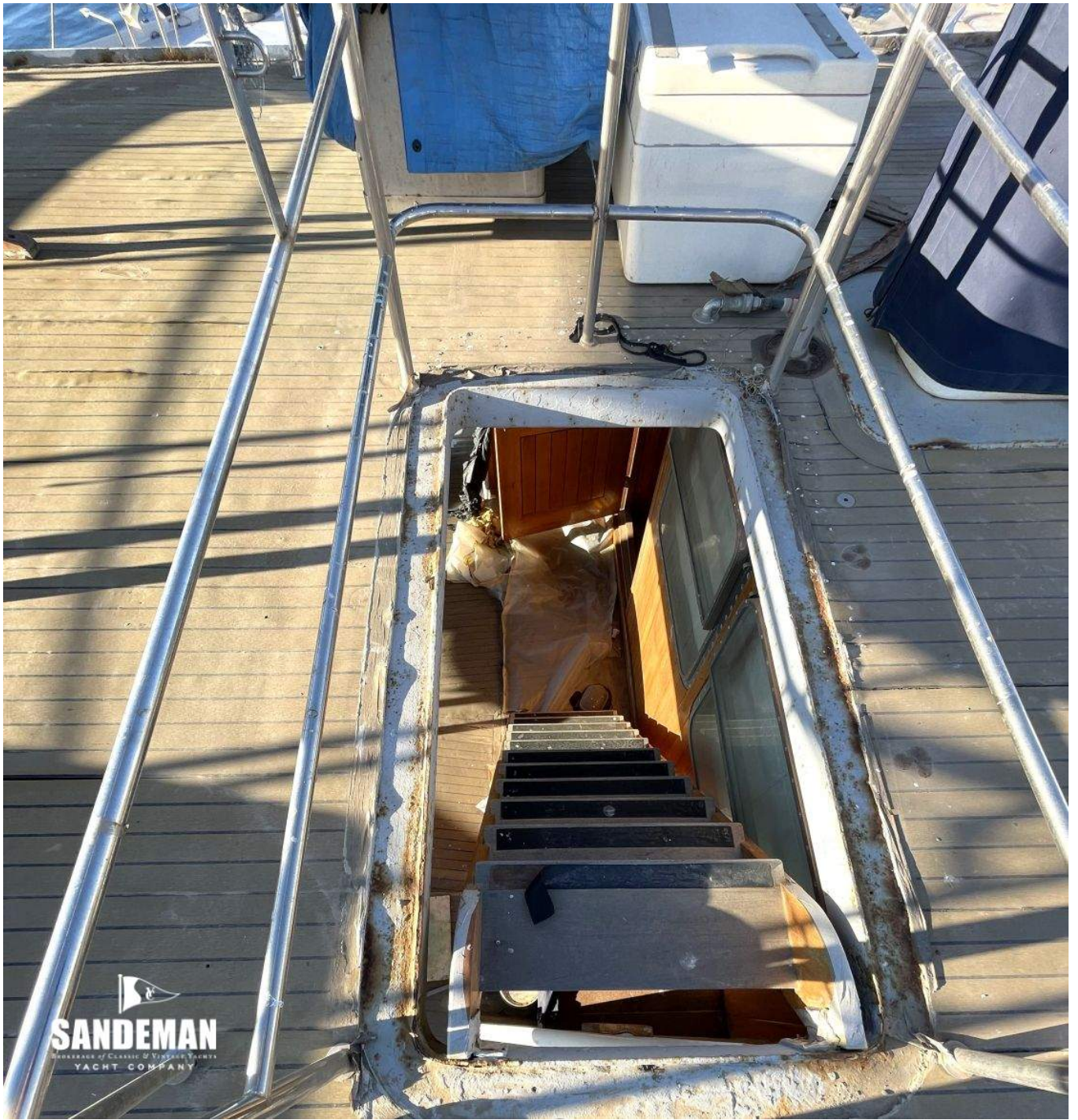




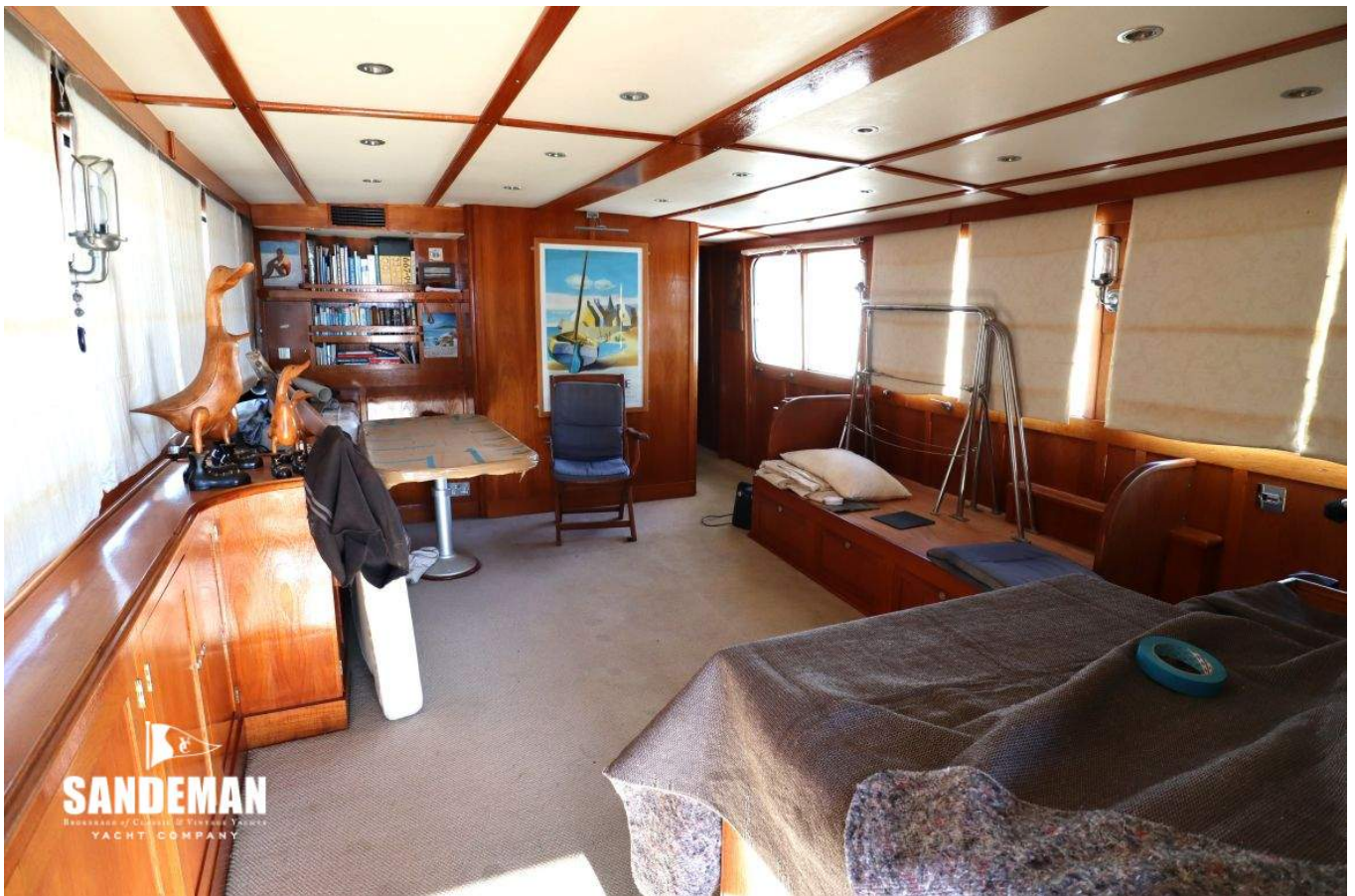


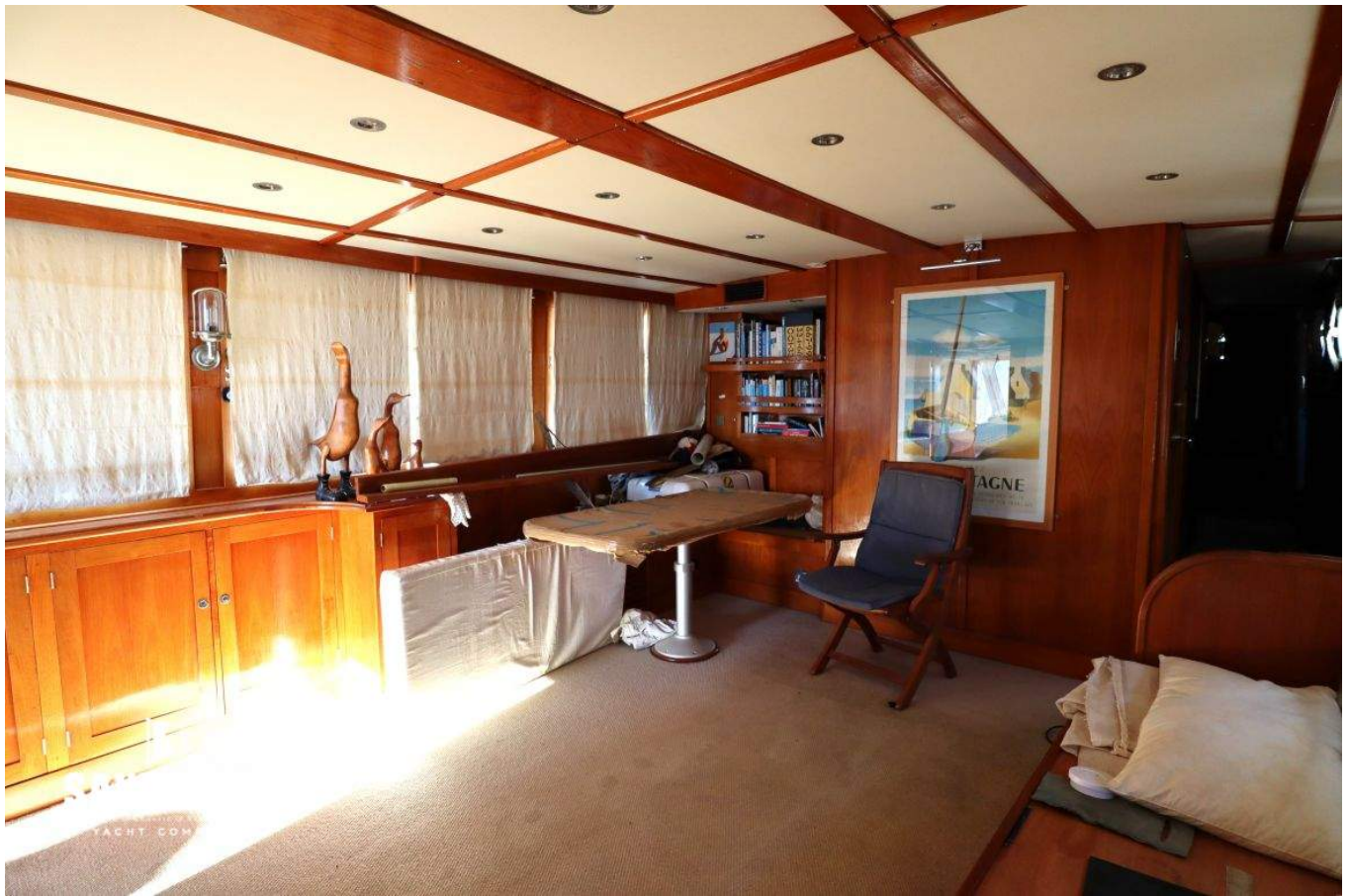






  
**SANDEMAN**  
WORKSHOPS OF CLASSIC & VINTAGE YACHTS  
YACHT COMPANY







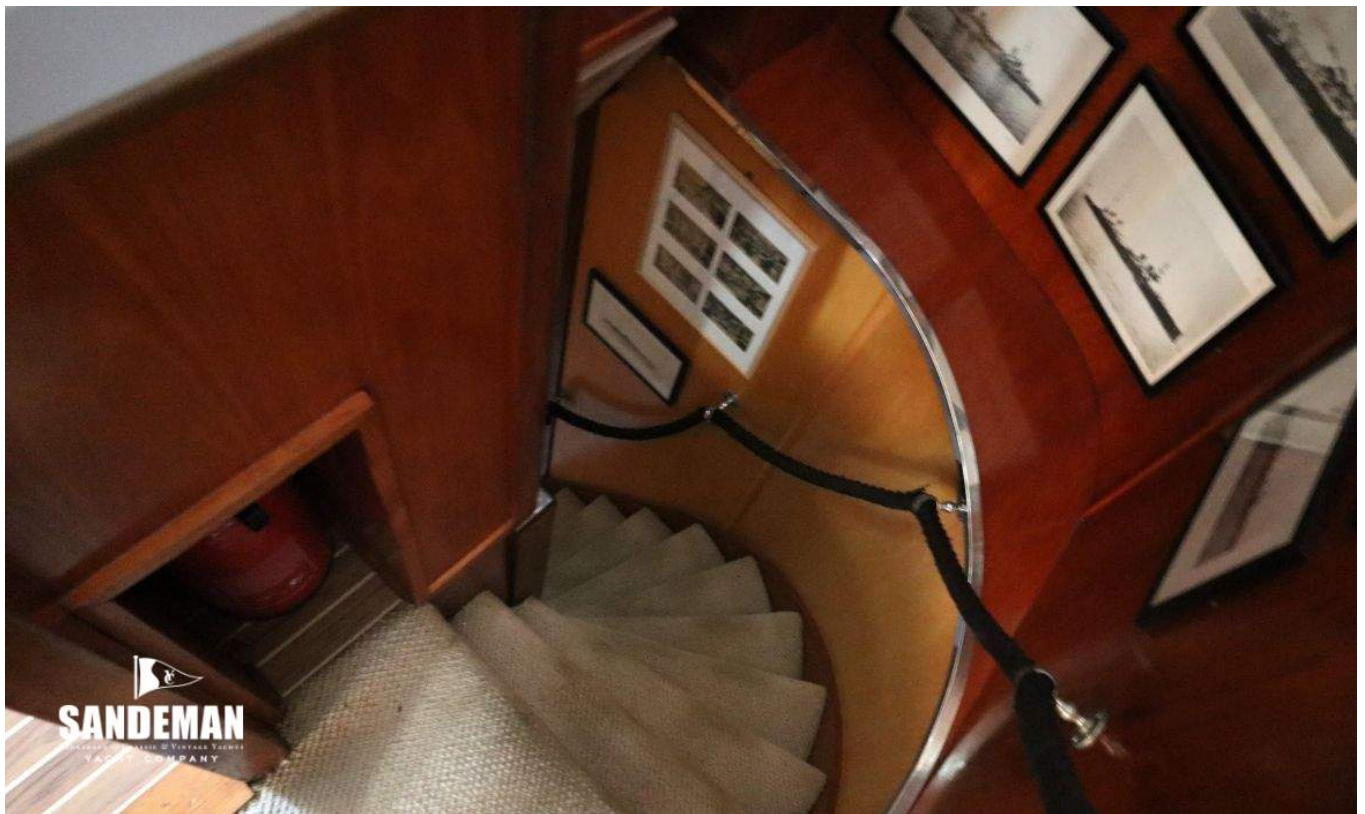
  
**SANDEMAN**  
WINE COMPANY

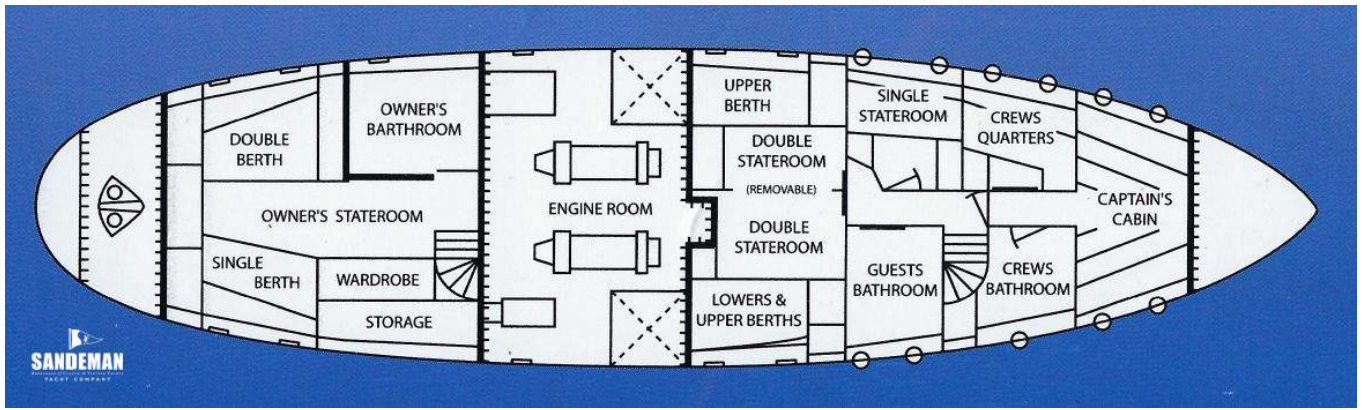


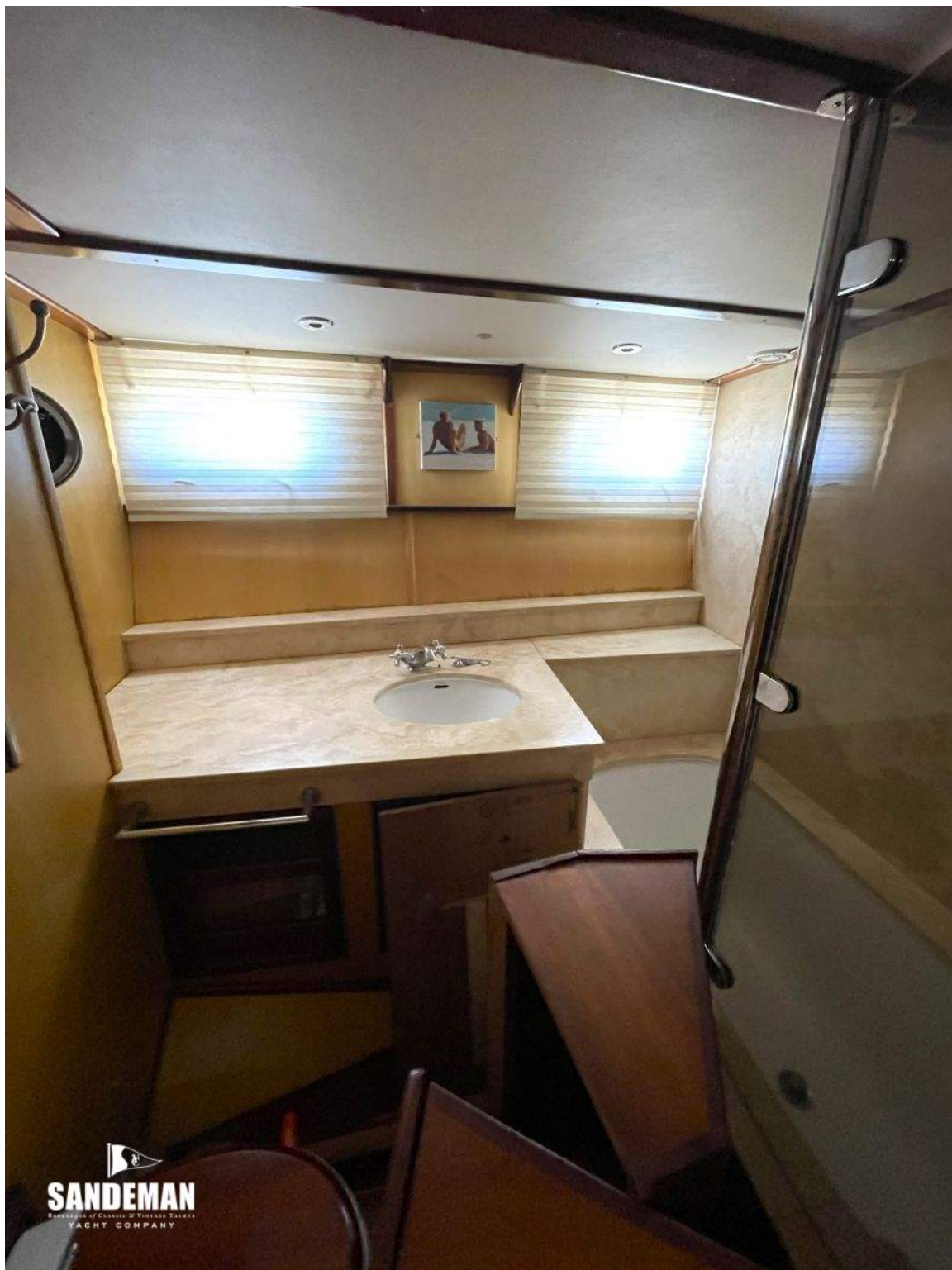












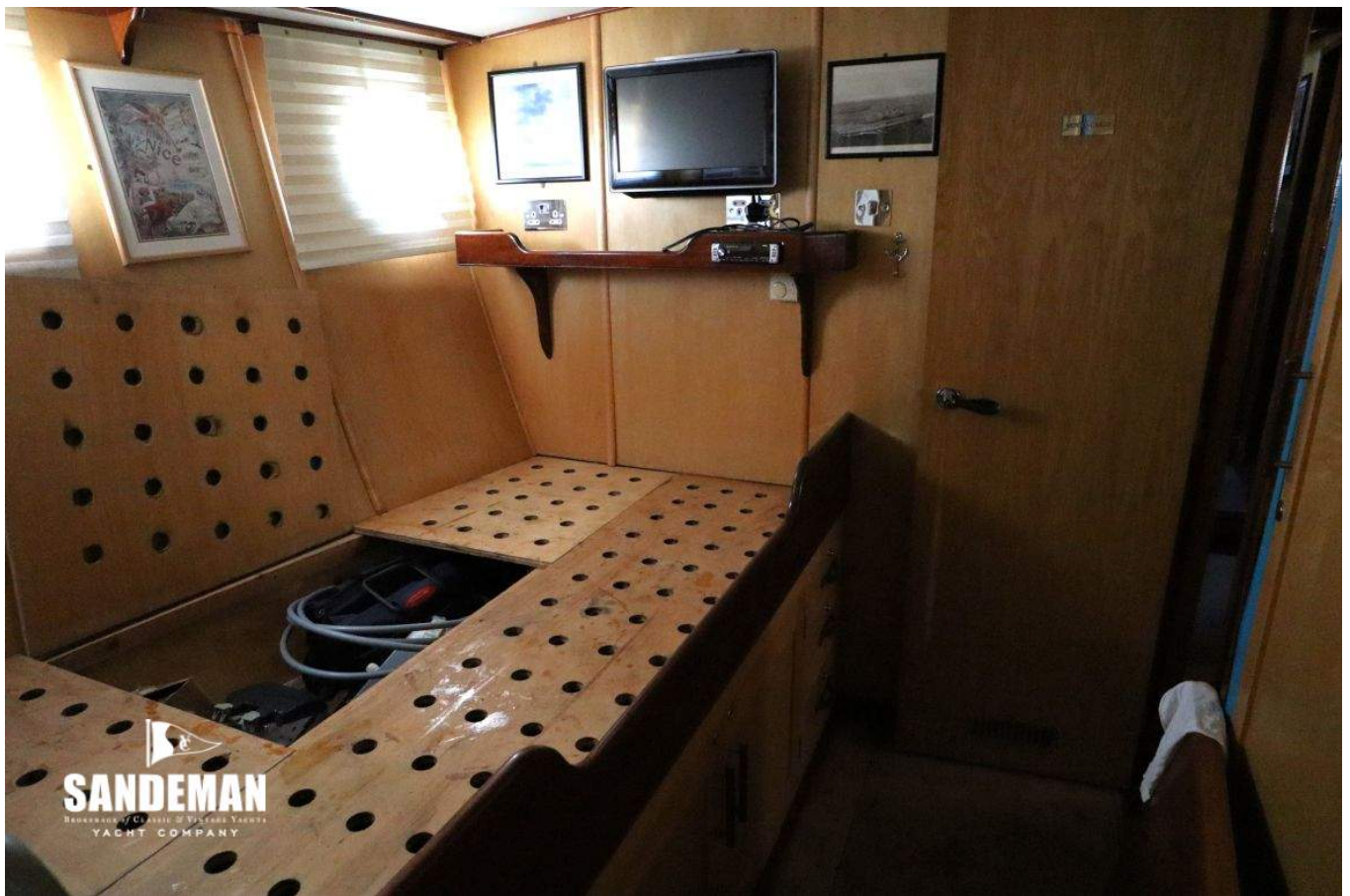
  
**SANDEMAN**  
SARDEGNIA - CUNEO - TREVISO - TRIESTE  
YACHT COMPANY



  
**SANDEMAN**  
BROKERS OF CLASSIC & VINTAGE YACHTS  
YACHT COMPANY



  
**SANDEMAN**  
SANDERSON / CLARKE & JORDAN YACHTS  
YACHT COMPANY



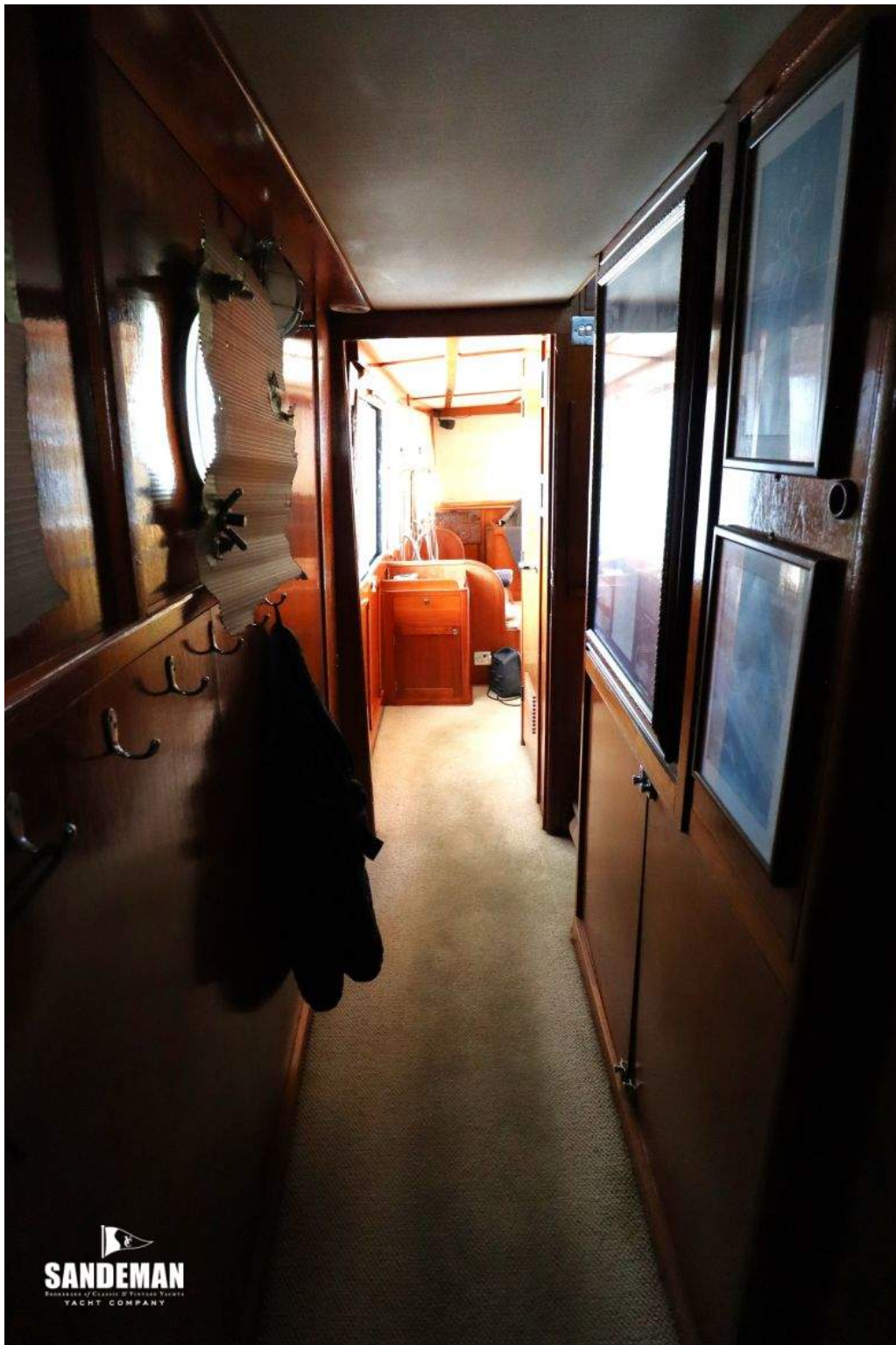






  
**SANDEMAN**  
BROKERAGE OF CLASSIC & VINTAGE YACHTS  
YACHT COMPANY

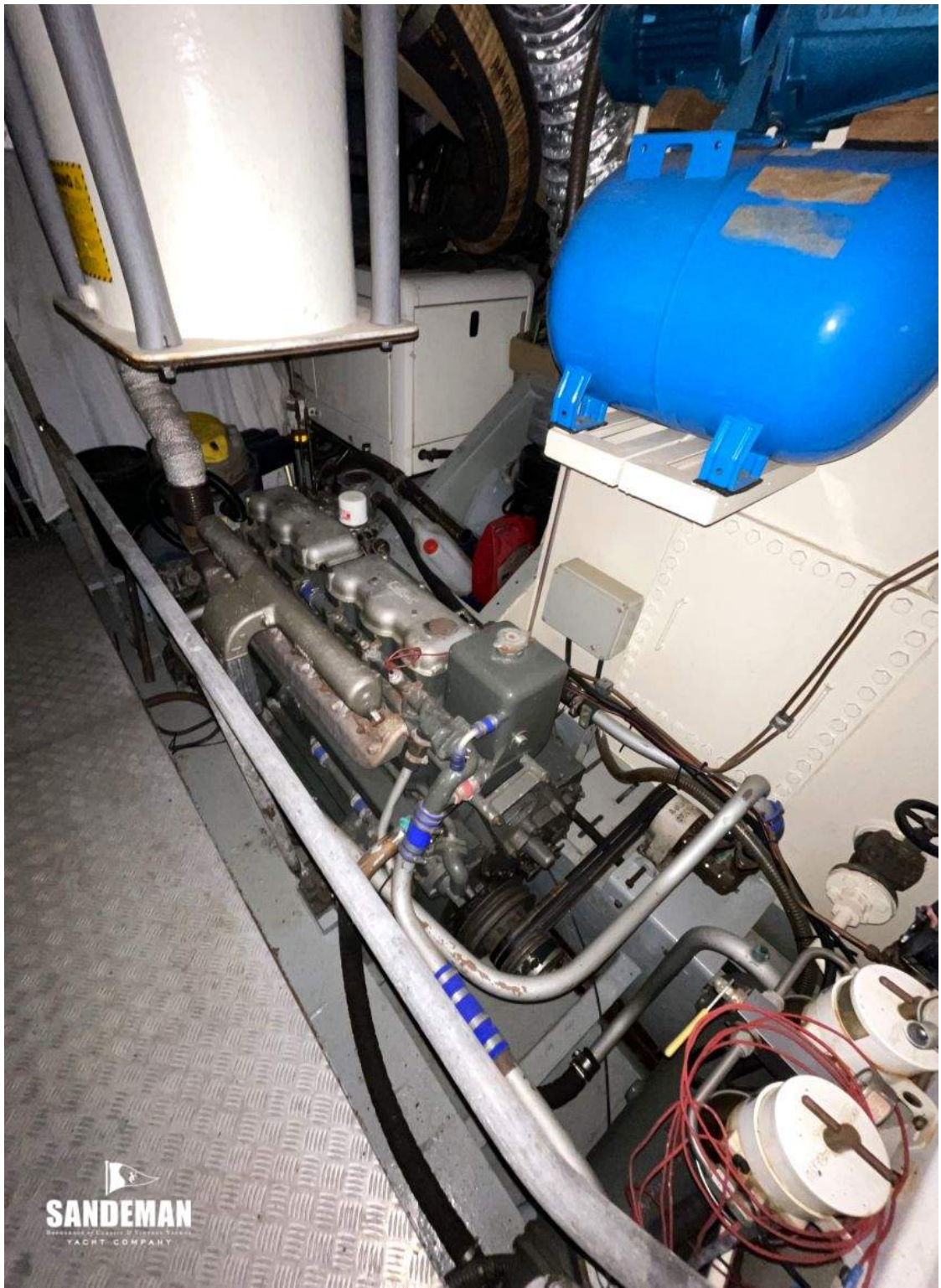




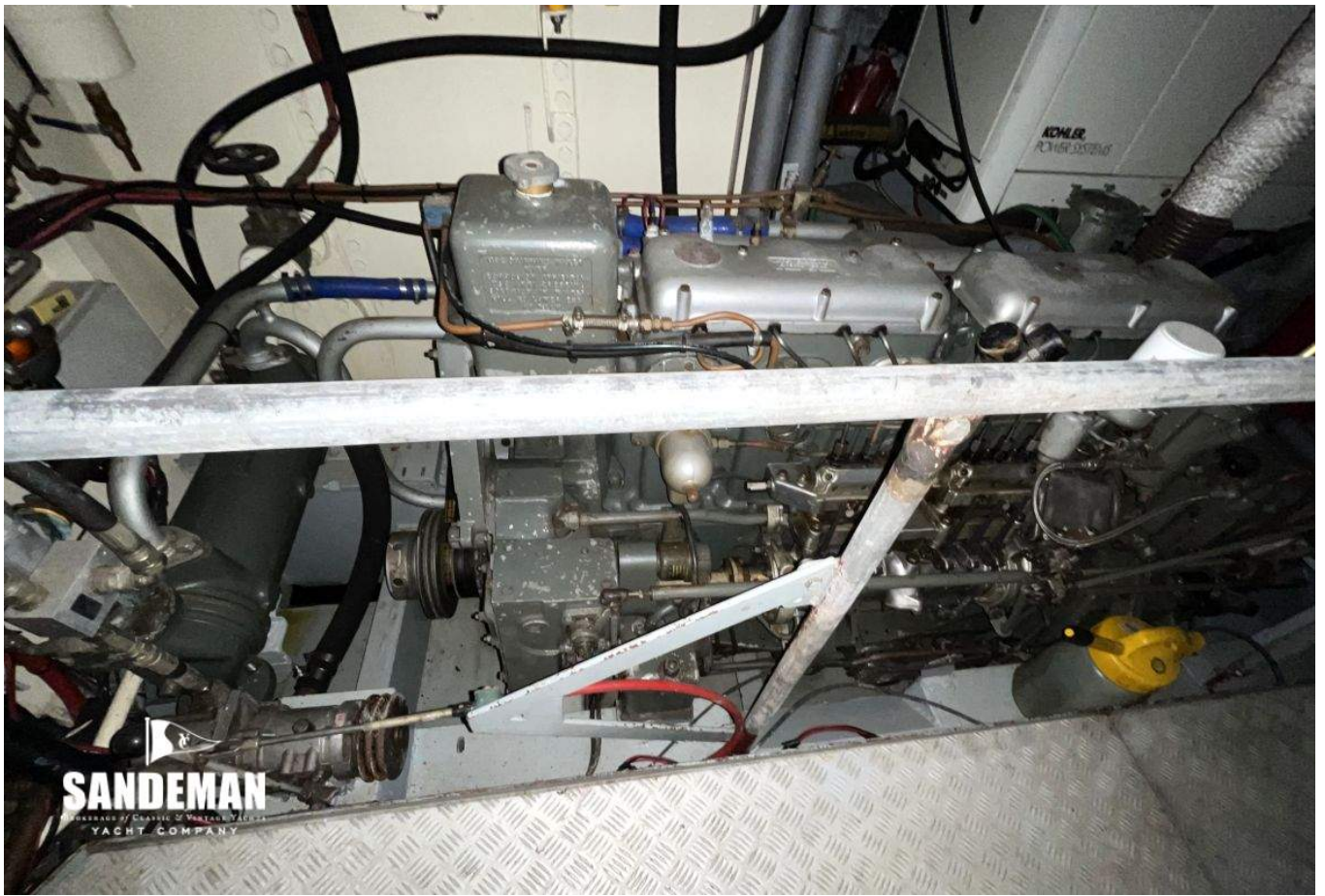




**SANDEMAN**  
DEPARTMENT OF CRAFTING & VINTAGE YACHTS  
YACHT COMPANY



  
**SANDEMAN**  
DEALER OF QUALITY & PERFORMANCE  
YACHT COMPANY



**SANDEMAN**  
DESIGNED BY CONNOR & WILSON  
YACHT COMPANY

